



INSTRUCTIONS—INSTRUCCIONES—CONSIGNES

SIGNATURE OF QUALITY
AUTOMOTIVE PRODUCTS, INC.

APPLICATION: 2003-2005 DODGE RAM 2500HD/3500HD, 2002-2005 1500 DODGE RAM
PART NUMBER: 40-1205, 45-1200

ITEM	QUANTITY	DESCRIPTION	TOOLS NEEDED
1	1	GRILLE GUARD ASSY.	13MM , 15MM, 19MM SOCKET
2, 3	2	MOUNTING BRACKETS (2) DRIVER SIDE & (3) PASSENGER SIDE	RATCHET
4	8	M10 X 40MM HEX BOLTS	13MM, 15MM WRENCH
5	8	M10 NYLON INSERT LOCK NUTS	TORQUE WRENCH
6	8	M10 FLAT WASHERS	
7	6	M12 X 35MM HEX BOLT	
8	6	M12 NYLON INSERT LOCK NUTS	
9	12	M12 FLAT WASHERS	
1	1	GRILLE GUARD ASSY.	13MM , 15MM, 19MM SOCKET
2, 3	2	MOUNTING BRACKETS (2) DRIVER SIDE & (3) PASSENGER SIDE	RATCHET
4	8	M10 X 40MM HEX BOLTS	13MM, 15MM WRENCH
5	8	M10 NYLON INSERT LOCK NUTS	TORQUE WRENCH
6	8	M10 FLAT WASHERS	
7	6	M12 X 35MM HEX BOLT	
8	6	M12 NYLON INSERT LOCK NUTS	
9	12	M12 FLAT WASHERS	
1	1	GRILLE GUARD ASSY.	13MM , 15MM, 19MM SOCKET
2, 3	2	MOUNTING BRACKETS (2) DRIVER SIDE & (3) PASSENGER SIDE	RATCHET
4	8	M10 X 40MM HEX BOLTS	13MM, 15MM WRENCH
5	8	M10 NYLON INSERT LOCK NUTS	TORQUE WRENCH
6	8	M10 FLAT WASHERS	
7	6	M12 X 35MM HEX BOLT	
8	6	M12 NYLON INSERT LOCK NUTS	
9	12	M12 FLAT WASHERS	

1. Remove all contents from packaging. Verify that all parts that are listed are present and free from damage. Carefully read and understand instructions before attempting installation.
2. If the vehicle is equipped with factory tow hooks, they must be removed for installation. Remove the (4) bolts and nuts that hold each front tow hook to the frame of the vehicle.
3. Attach each mounting bracket to the vehicle frame at the tow hook location using (4) M10 x 40MM hex bolts, (4) M10 nylon insert lock nuts, and (8) M10 flat washers per mounting bracket. Triangular gusset will face the outsides of the vehicle when mounted. See 1500 installation pictures for the bolt pattern for the 1500 mounting bracket. Do not fully tighten at this time.
4. Attach the grille guard assembly to the mounting brackets using (6) M12 hex bolts, (6) M12 nylon insert lock nuts, and (12) M12 flat washers.
5. Align as desired and tighten all fasteners. Tighten M10 fasteners to 40-50 lbs-ft, M12 fasteners to 60-70 lbs-ft.

Finish Protection

Westin products have a high quality finish that must be cared for like any other exposed finish on a vehicle. Protect the finish with a non-abrasive automotive wax (e.g. pure



Westin Automotive Products, Inc.
5200 N. Irwindale Ave. Ste 220
Irwindale, Ca 91706

Thank You for choosing Westin products
For additional installation assistance please call
Customer Service (800)793-7846



SIGNATURE OF QUALITY

AUTOMOTIVE PRODUCTS, INC.

INSTRUCTIONS—INSTRUCCIONES—CONSIGNES

APPLICATION: 2003-2005 DODGE RAM 2500HD/3500HD, 2002-2005 1500 DODGE RAM
PART NUMBER: 40-1205, 45-1200

1. Remove all contents from packaging. Verify that all parts that are listed are present and free from damage. Carefully read and understand instructions before attempting installation.
2. If the vehicle is equipped with factory tow hooks, they must be removed for installation. Remove the (4) bolts and nuts that hold each front tow hook to the frame of the vehicle.
3. Attach each mounting bracket to the vehicle frame at the tow hook location using (4) M10 x 40MM hex bolts, (4) M10 nylon insert lock nuts, and (8) M10 flat washers per mounting bracket. Triangular gusset will face the outsides of the vehicle when mounted. See 1500 installation pictures for the bolt pattern for the 1500 mounting bracket.. Do not fully tighten at this time.
4. Attach the grille guard assembly to the mounting brackets using (6) M12 hex bolts, (6) M12 nylon insert lock nuts, and (12) M12 flat washers.
5. Align as desired and tighten all fasteners. Tighten M10 fasteners to 40-50 lbs-ft, M12 fasteners to 60-70 lbs-ft.

Finish Protection

Westin products have a high quality finish that must be cared for like any other exposed finish on a vehicle. Protect the finish with a non-abrasive automotive wax (e.g. pure

1. Remove all contents from packaging. Verify that all parts that are listed are present and free from damage. Carefully read and understand instructions before attempting installation.
2. If the vehicle is equipped with factory tow hooks, they must be removed for installation. Remove the (4) bolts and nuts that hold each front tow hook to the frame of the vehicle.
3. Attach each mounting bracket to the vehicle frame at the tow hook location using (4) M10 x 40MM hex bolts, (4) M10 nylon insert lock nuts, and (8) M10 flat washers per mounting bracket. Triangular gusset will face the outsides of the vehicle when mounted. See 1500 installation pictures for the bolt pattern for the 1500 mounting bracket.. Do not fully tighten at this time.
4. Attach the grille guard assembly to the mounting brackets using (6) M12 hex bolts, (6) M12 nylon insert lock nuts, and (12) M12 flat washers.
5. Align as desired and tighten all fasteners. Tighten M10 fasteners to 40-50 lbs-ft, M12 fasteners to 60-70 lbs-ft.

Finish Protection

Westin products have a high quality finish that must be cared for like any other exposed finish on a vehicle. Protect the finish with a non-abrasive automotive wax (e.g. pure



2500/3500 IN-STALLATION



Westin Automotive Products, Inc.
5200 N. Irwindale Ave. Ste 220
Irwindale, Ca 91706

Thank You for choosing Westin products
For additional installation assistance please call
Customer Service (800)793-7846



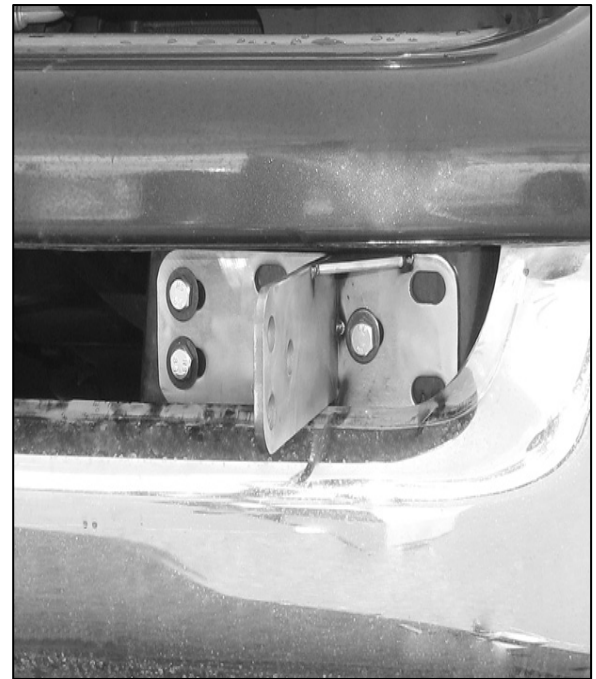
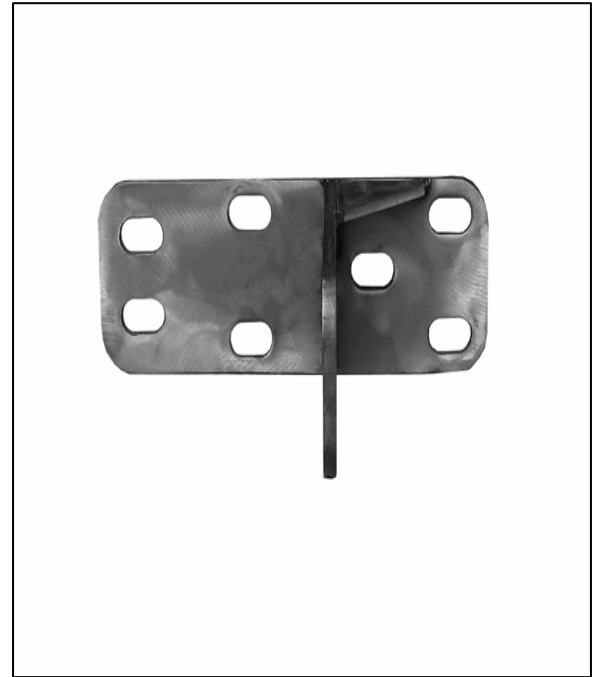
SIGNATURE OF QUALITY

AUTOMOTIVE PRODUCTS, INC.

INSTRUCTIONS—INSTRUCCIONES—CONSIGNES

APPLICATION: 2003-2005 DODGE RAM 2500HD/3500HD, 2002-2005 1500 DODGE RAM
PART NUMBER: 40-1205, 45-1200

1500 INSTALLATION



Westin Automotive Products, Inc.
5200 N. Irwindale Ave. Ste 220
Irwindale, Ca 91706

Thank You for choosing Westin products
For additional installation assistance please call
Customer Service (800)793-7846