



INSTALLATION INSTRUCTIONS

HDX MODULAR WINCH MOUNT GRILLE GUARD

APPLICATION:

2007-2021 Toyota Tundra (46-22235);

2014-2021 Toyota Tundra (57-923705A)

PART NUMBER:

Grille Guard Kit: 57-923705A

Winch Tray Kit: 46-22235 (2007-2021)
Kit Number: 57-923705 (2014-2021)

| CONTENT | | | |
|---|----------|---------------------------------------|--------------------------|
| ITEM | QUANTITY | DESCRIPTION | TOOLS NEEDED |
| 1 | 1 | WINCH TRAY | 14MM WRENCH |
| 2 | 1 | DRIVER SIDE LOWER MOUNTING BRACKET | 14MM MEDIUM DEPTH SOCKET |
| 3 | 1 | PASSENGER SIDE LOWER MOUNTING BRACKET | |
| 4 | 1 | DRIVER SIDE UPPER SUPPORT STRAP | 16MM WRENCH |
| 5 | 1 | PASSENGER SIDE UPPER MOUNTING BRACKET | 16MM SOCKET |
| 6 | 2 | UPPER SUPPORT STRAP | 17MM WRENCH |
| 7 | 6 | M12 BUTTON HEAD BOLT | 17MM SOCKET |
| 8 | 12 | M12 FLAT WASHER | 18MM WRENCH |
| 9 | 6 | M12 LOCK WASHER | 18MM SOCKET |
| 10 | 6 | M12 HEX NUT | SMALL PRY BAR |
| 11 | 4 | M10 HEX HEAD BOLT | RATCHET |
| 12 | 4 | M10 FLAT WASHER | TORQUE WRENCH |
| 13 | 4 | M10 SERRATED FLANGE NUT | ALLEN WRENCH |
| 14 | 1 | HDX GRILLE GUARD BASE | |
| HARDWARE ITEMS BELOW ARE INCLUDED WITH THE GRILLE GUARD KIT | | | |
| 15 | 1 | HDX DRIVER WING | |
| 16 | 1 | HDX PASSENGER WING | |
| 17 | 2 | MOUNTING SPACER | |
| 18 | 4 | M12 BUTTON HEAD BOLT | |
| 19 | 8 | M12 FLAT WASHER | |
| 20 | 4 | M12 LOCK WASHER | |
| 21 | 4 | M12 HEX NUT | |
| 22 | 4 | M10 BUTTON HEAD BOLT | |
| 23 | 8 | M10 FLAT WASHER | |
| 24 | 4 | M10 LOCK WASHER | |
| 25 | 4 | M10 HEX NUT | |
| 26 | 10 | M8 BUTTON HEAD HEX SOCKET BOLT | |
| 27 | 10 | M8 BELLVILLE WASHER | |
| 28 | 10 | M8 SERRATED FLANGE NUT | |
| ANTI-SEIZE LUBRICANT MUST BE USED ON ALL STAINLESS STEEL FASTENERS TO PREVENT THREAD DAMAGE AND GALLING | | | |

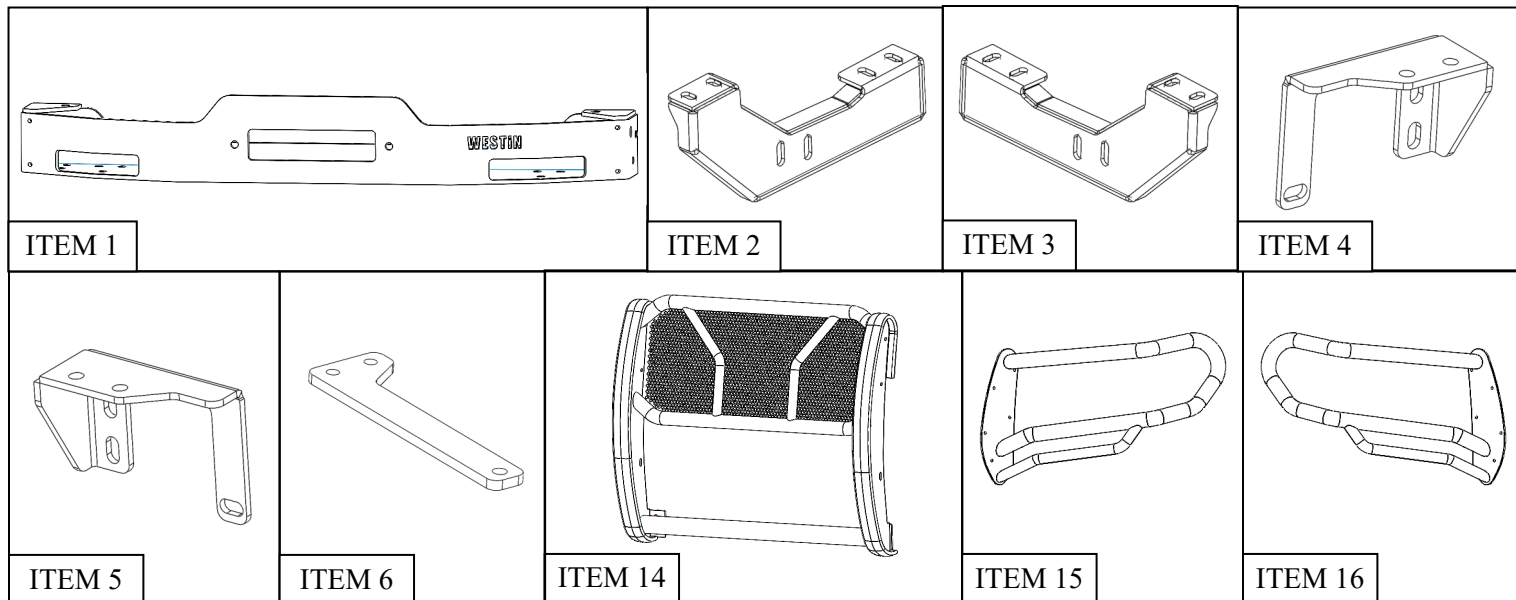


Westin Automotive Products, Inc.
320 Covina Blvd
San Dimas, Ca. 91773

Thank You for choosing Westin products
For Additional installation assistance please call
Customer service (800) 793-7846

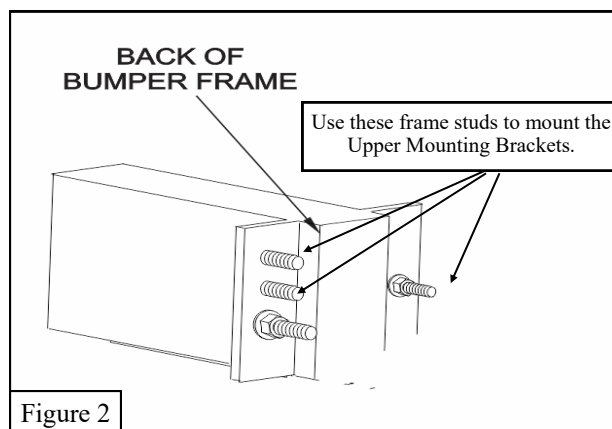
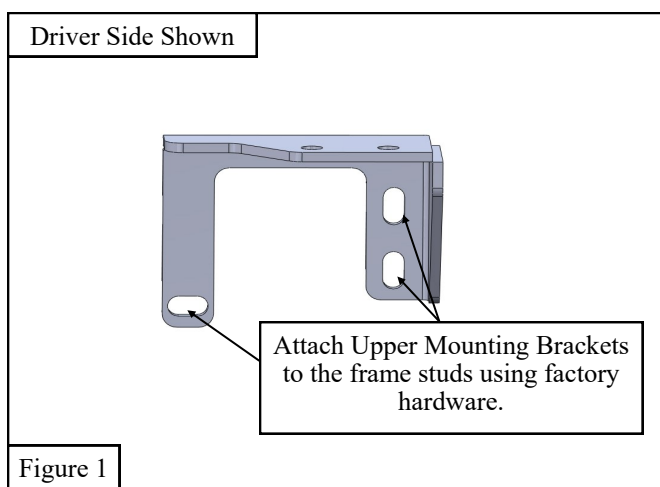
www.westinautomotive.com

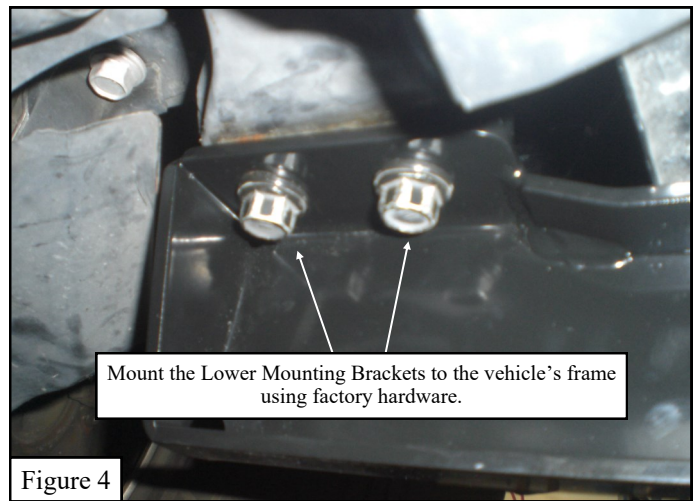
DATE: 04/22/2022



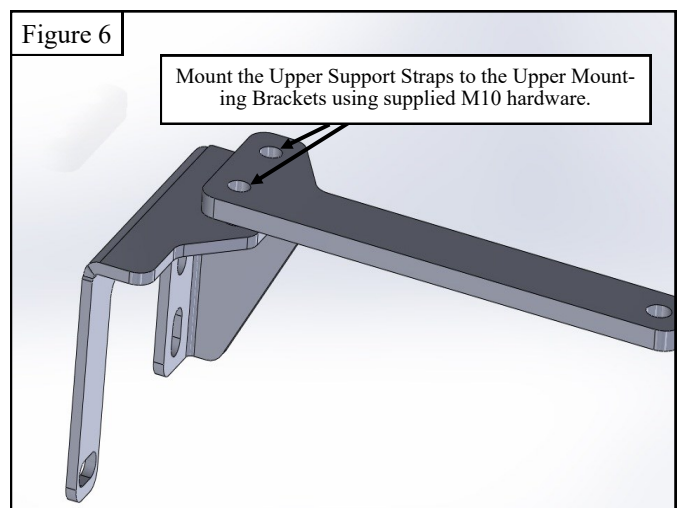
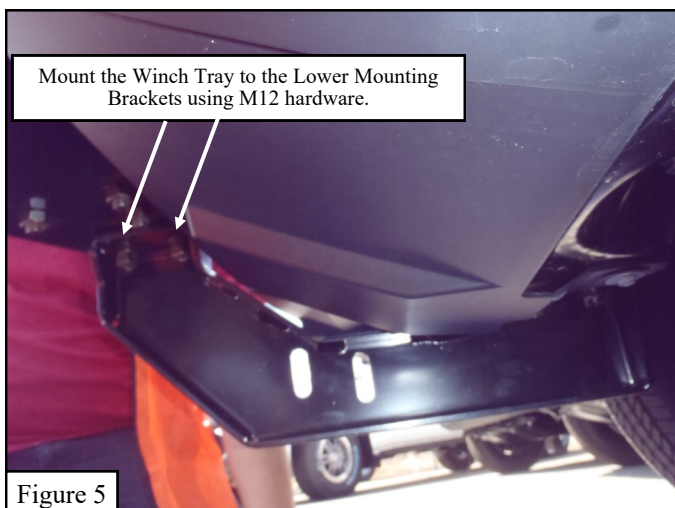
PROCEDURE

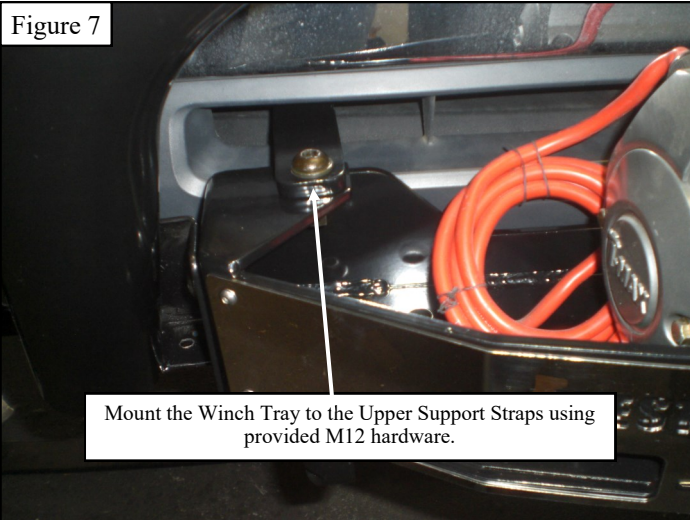
1. Remove contents from box, verify if all parts listed are present and free from damage. Carefully read and understand all instructions before attempting installation.
Failure to identify damage before installation could lead to a rejection of any claim.
2. Starting at the front of the vehicle remove the cargo tie down loops/tow hooks if they are equipped and set factory hardware aside. **Note:** *The cargo tie down/tow hooks cannot be re-installed with this application.*
3. Locate the four studs on the driver side bumper frame, and remove the top two factory nuts. Locate the single stud on the outside of the bumper frame and remove the factory 14MM nut. Locate the Driver Side Upper Mounting Bracket (Item 4) and loosely mount it to the bumper frame studs using the factory hardware. Repeat this step for the passenger side. See **Figures 1 and 2** for reference.
4. **For 2014+ vehicles:** Remove the plastic bumper insert by simultaneously prying and pushing on the retaining tabs with a suitable tool from the front of the vehicle. See **Figure 3** for reference. **Note:** *It is recommended to use masking tape to prevent scratching the bumper.*
5. Locate the Driver Side Lower Mounting Bracket (Item 2) and loosely mount it to the location where the tow hook was previously installed and using the factory hardware. Repeat for the passenger side. See **Figure 4** for reference.





6. With assistance, locate and loosely mount the Winch Tray (Item 1) onto the Lower Mounting Brackets using the provided M12 hardware. See **Figure 5** for reference.
7. Locate the Driver Side Upper Support Strap (Item 6) and place it through the opening in the plastic valance and loosely mount it to the Driver Side Upper Mounting Bracket (Item 4) using the provided M10 hardware. See **Figure 6** for reference. **Note:** 2010+ vehicles may require minor trimming of the valance opening.
8. Loosely mount the Winch Tray to the Upper Mounting Brackets using the provided M12 hardware. See **Figure 7** for reference.
9. **For 2014+ vehicles:** Hold the plastic bumper insert up to the opening, mark where the support straps protrude, trim as necessary, and then reinstall it into the opening.
10. If only installing the Winch Tray without a Grille Guard, align and adjust the Winch Tray as needed then fully tighten all hardware at this time. Torque all M10 hardware to 30-35 ft-lbs, and M12 hardware to 50 ft-lbs.
11. Install the winch per the winch manufacturer's instructions. **Note:** If installing a Grille Guard, the winch must be installed prior to installing the Grille Guard as it will be more difficult to do so after.





12. With assistance, loosely attach the HDX Grille Guard Base (Item 14) to the Winch Tray and Lower Mounting Brackets using the supplied M10 hardware, M12 hardware, and Mounting Spacers. Use the included Mounting Spacers between the Lower Mounting Brackets and the Grille Guard Base. Loosely attach the Grille Guard Base to the Lower Mounting Brackets using (2) M12 button head bolts, (4) M12 flat washers, (2) M12 lock washers, and (2) M12 hex nuts, attach the grille guard to the winch tray using (4) M10 button head bolts, (8) M10 flat washers, (4) M10 lock washers, and (4) M10 hex nuts. See **Figure 8 & 10** for reference.
13. Locate and install the HDX Driver and Passenger Wings (Items 15-16) using the supplied M8 hardware (Items 26-28). See **Figure 9** for reference.
14. Align and adjust the Grille Guard Base, HDX Wings, Winch Tray, and mounting brackets as needed then fully tighten all hardware at this time. Tighten and torque all hardware as specified: M8 to 15-18 ft-lbs., M10 to 25-30 ft-lbs., M12 to 45-50 ft-lbs.. **Note:** *There will be extra hardware if installing the Modular Grille Guard.*

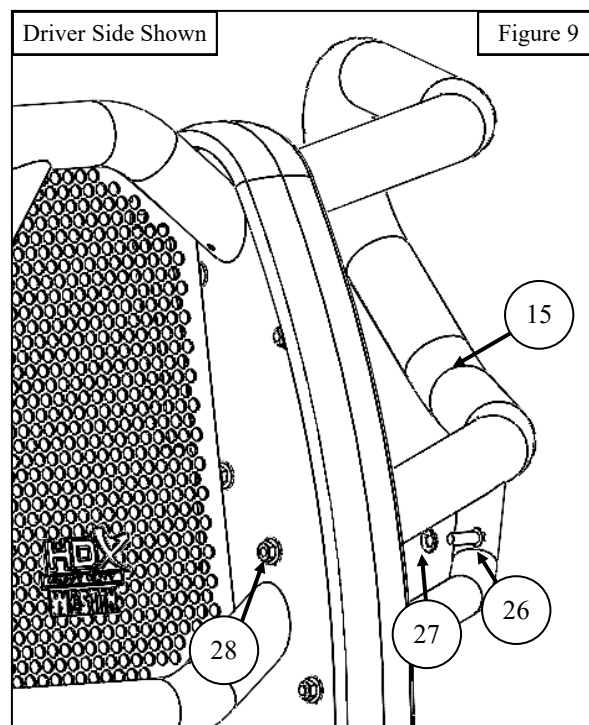
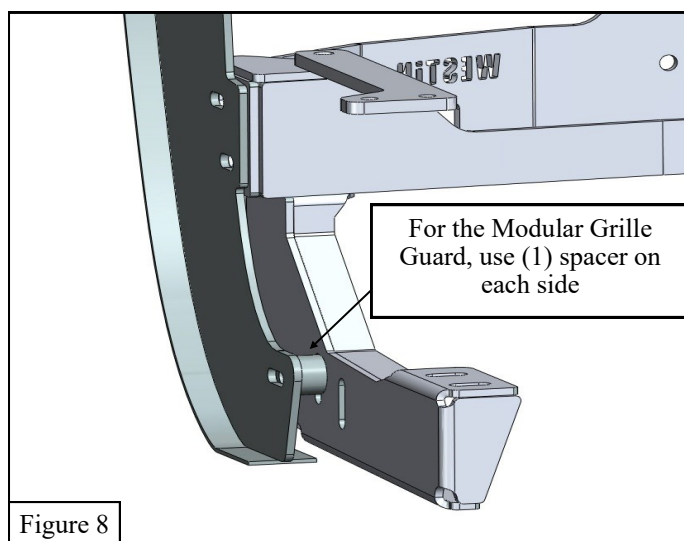
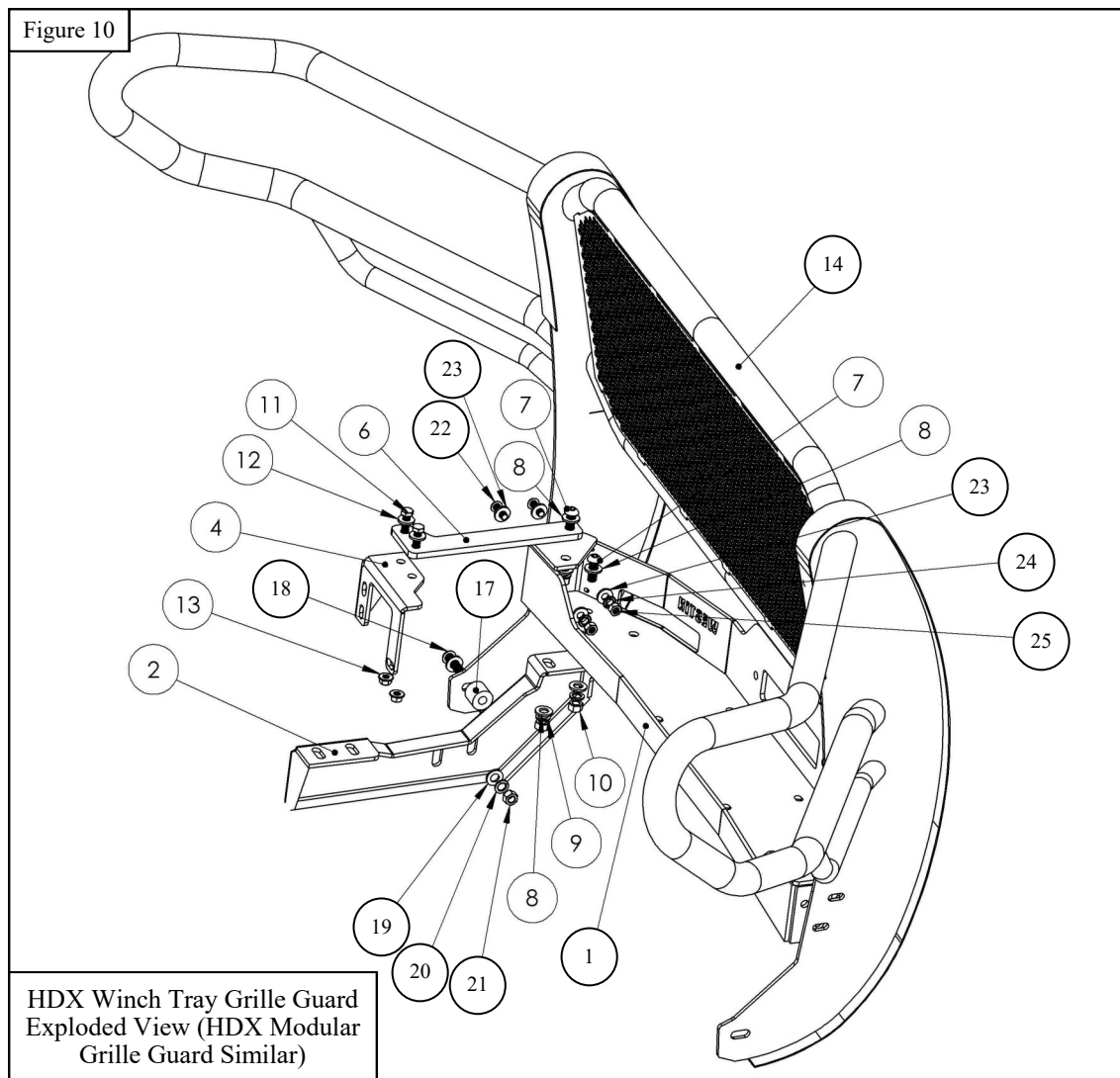


Figure 10



Westin Automotive Products, Inc.
320 Covina Blvd
San Dimas, Ca. 91773

Thank You for choosing Westin products
For Additional installation assistance please call
Customer service (800) 793-7846
www.westinautomotive.com

INSTALLATION COMPLETE



©2018 WESTIN AUTOMOTIVE PRODUCTS, INC. ALL RIGHTS RESERVED.

CARE INSTRUCTIONS

- REGULAR WAXING IS RECOMMENDED. DO NOT USE ANY TYPE OF POLISH OR WAX THAT MAY CONTAIN ABRASIVES.
- STAINLESS STEEL PRODUCTS CAN BE CLEANED WITH MILD SOAP AND WATER. STAINLESS STEEL POLISH SHOULD BE USED TO POLISH SMALL SCRATCHES.
- GLOSS BLACK FINISHES SHOULD BE CLEANED WITH MILD SOAP AND WATER.

WESTIN

Westin Automotive Products, Inc.
320 Covina Blvd
San Dimas, Ca. 91773

Thank You for choosing Westin products
For Additional installation assistance please call
Customer service (800) 793-7846
www.westinautomotive.com

DATE: 04/22/2022



WARNING



Failure to follow these instructions could lead to death, personal injury, and / or property damage.

Failure to follow these instructions could lead to death, personal injury, and / or property damage.

FASTENERS:

All Westin supplied fasteners must be utilized and installed in accordance with the installation instructions and apply torque to the specifications as defined. **DOUBLE CHECK ALL FASTENERS BEFORE INITIAL USE, AND PERIODICALLY IN THE FUTURE TO ENSURE PROPER FUNCTION AND SAFETY.**

DRILLING:

Most Westin products do not require drilling for installation. If drilling is defined as required, use caution when drilling a vehicle. **FAILURE TO REVIEW AN AREA TO BE DRILLED MAY RESULT IN PERSONAL INJURY AND/OR INJURY TO OTHERS AS WELL AS VEHICLE DAMAGE.**

EYE PROTECTION:

ALWAYS WEAR SAFETY GLASSES OR GOGGLES DURING THE INSTALLATION PROCESS TO AVOID PERSONAL INJURY.

MAXIMUM TOWING/CARRYING CAPACITY: (if applicable)

The Westin Receiver Hitches will have a visible tow rating label affixed directly on the product. User should never exceed the vehicle manufacturers maximum tow and weight rating regardless of the capacity of the hitch. **FAILURE TO FOLLOW THESE GUIDELINES WILL VOID THE WESTIN WARRANTY AND MAY RESULT IN PERSONAL INJURY AND/OR INJURY TO OTHERS AS WELL AS VEHICLE DAMAGE.**

FOR CALIFORNIA RESIDENTS ONLY-PROP 65 WARNING:

Some products may contain chemicals such as DEHP, which can cause cancer, birth defects or other reproductive harm. For more info go to www.p65warnings.ca.gov



Westin Automotive Products, Inc.
320 Covina Blvd
San Dimas, Ca. 91773

Thank You for choosing Westin products
For Additional installation assistance please call
Customer service (800) 793-7846
www.westinautomotive.com