

# INSTALLATION INSTRUCTIONS

## HDX DROP STEPS

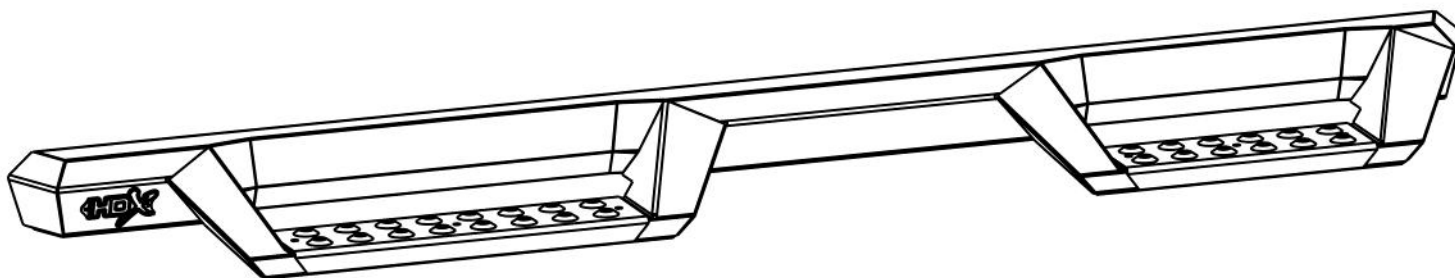


APPLICATION:  
TOYOTA 4RUNNER 2025

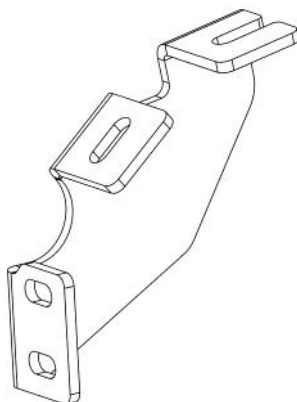
PART NUMBER:  
56-13785

CONTENT			
ITEM	QUANTITY	DESCRIPTION	TOOLS NEEDED
1	1	DRIVER DROP STEP	13MM SOCKET
2	1	PASSENGER DROP STEP	13MM WRENCH
3	1	DRIVER MOUNTING BRACKET "A"	RATCHET
4	1	PASSENGER MOUNTING BRACKET "A"	TORQUE WRENCH
5	2	DRIVER MOUNTING BRACKET "B"	
6	2	PASSENGER MOUNTING BRACKET "B"	
7	12	M8 LONG HEX HEAD CAP BOLT (YELLOW ZINC)	
8	12	M8 SHORT HEX HEAD CAP BOLT (YELLOW ZINC)	
9	24	M8 SPLIT LOCK WASHER (YELLOW ZINC)	
10	24	M8 FLAT WASHER (YELLOW ZINC)	
ANTI-SEIZE LUBRICANT MUST BE USED ON ALL STAINLESS STEEL FASTENERS TO PREVENT THREAD DAMAGE AND GALLING			

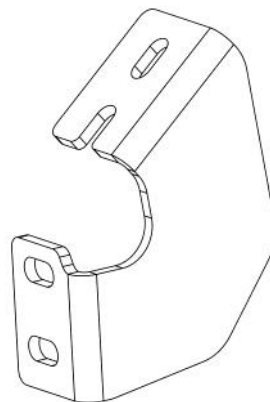
ITEM 1 - Passenger Side Opposite



ITEM 3 - Passenger Side Opposite



ITEM 5 - Passenger Side Opposite



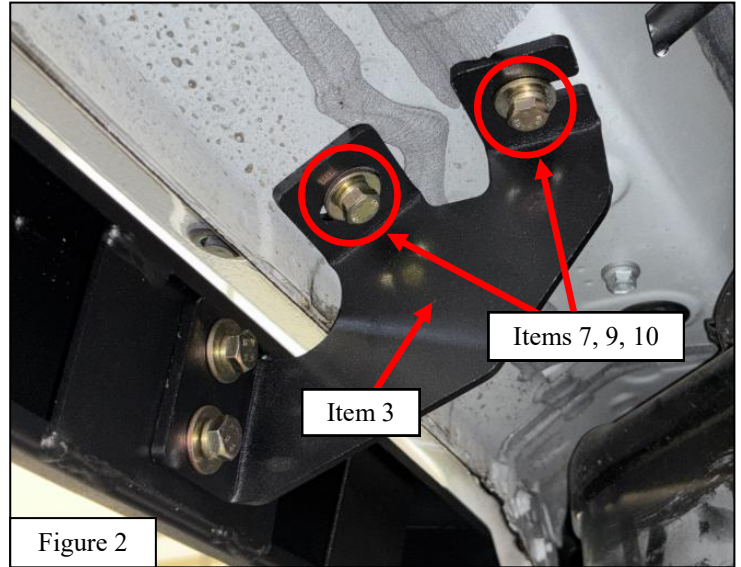
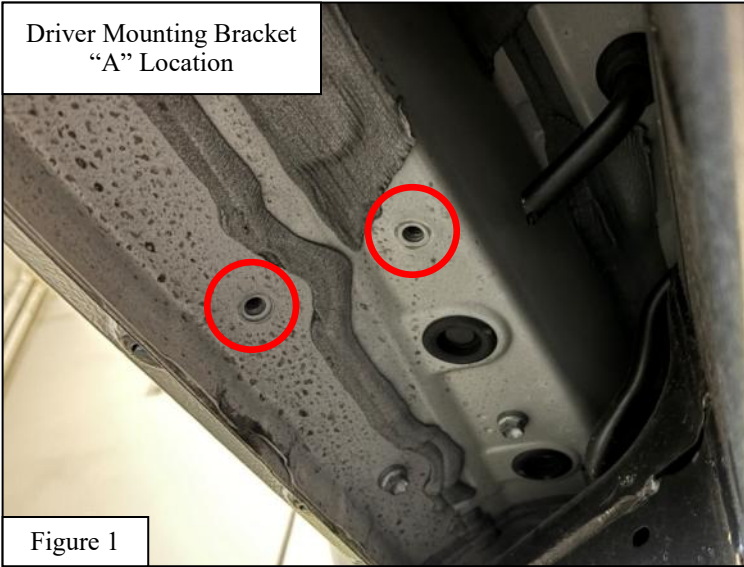
Westin Automotive Products, Inc.  
320 W. Covina Blvd  
San Dimas, Ca. 91773

Thank you for choosing Westin products  
for additional installation assistance please call  
Customer Service (800) 793-7846  
[www.westinautomotive.com](http://www.westinautomotive.com)

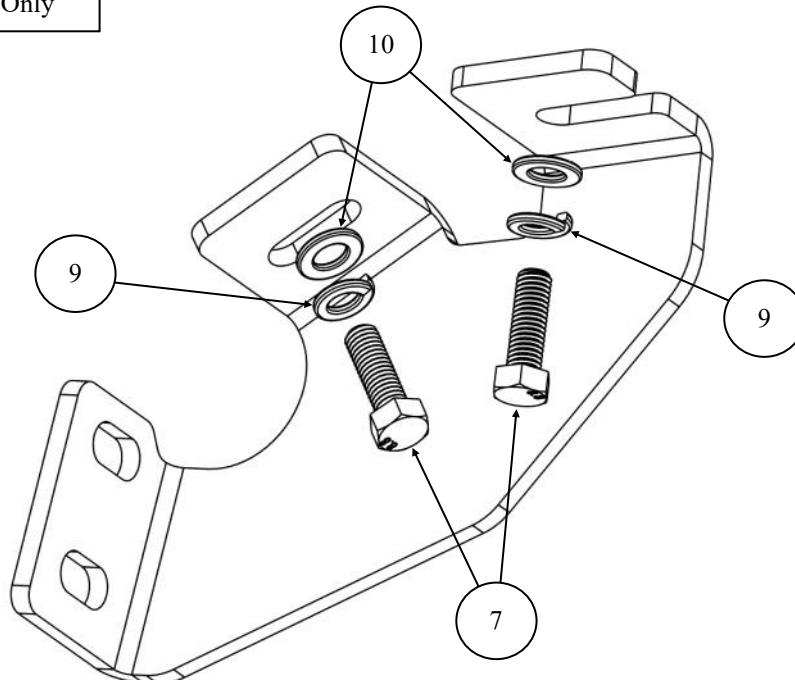
## PROCEDURE

1. Remove contents from box, verify if all parts listed are present and free from damage.  
Carefully read and understand all instructions before attempting installation.  
**Failure to identify damage before installation could lead to a rejection of any claim.**
2. Find the Driver Mounting Bracket "A" location and remove the OEM bolts. See **Figure 1**.
3. Loosely install Driver Mounting Bracket "A" (**item 3**) using the M8 hardware (**items 7, 9, 10**). See **Figures 2 and 3**.

Driver Mounting Bracket  
"A" Location



For Hardware  
Usage Only



4. Locate the two Driver Mounting Bracket “B” locations and remove the OEM bolts. See **Figures 4 and 5**.
5. Loosely install the two Driver Mounting Brackets “B” (**item 5**) using the M8 hardware (**items 7, 9, 10**). See **Figures 3 and 6**.

Front Driver Mounting  
Bracket “B” Location

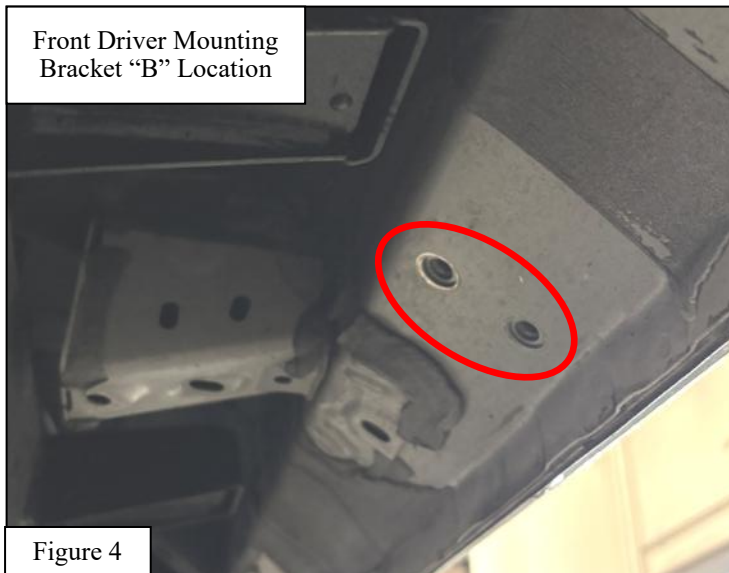


Figure 4

Rear Driver Mounting  
Bracket “B” Location

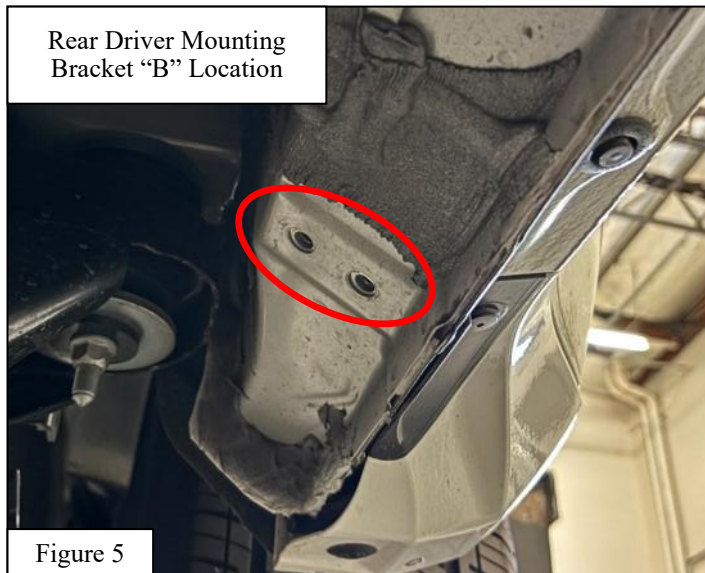


Figure 5

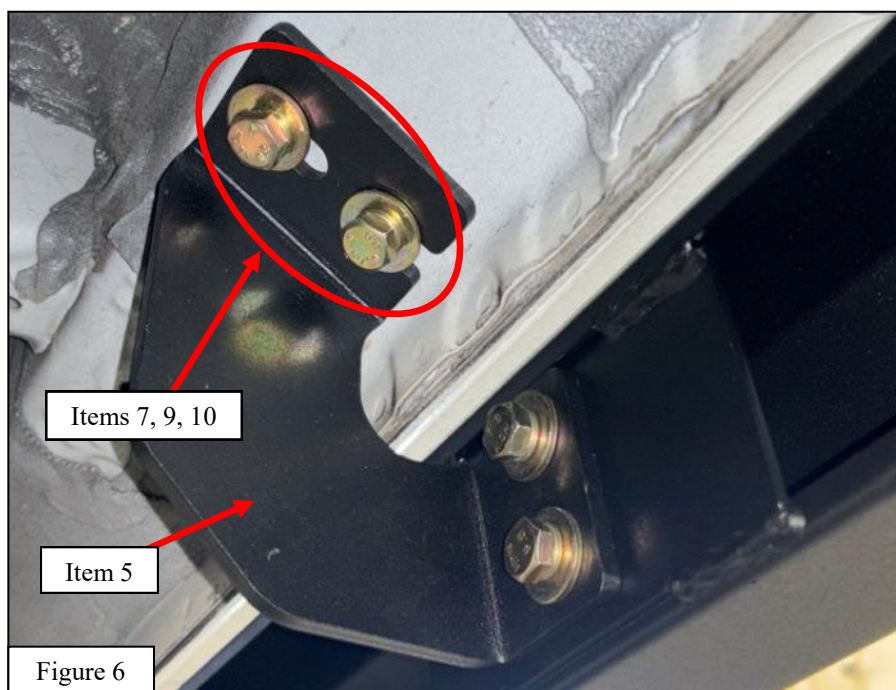
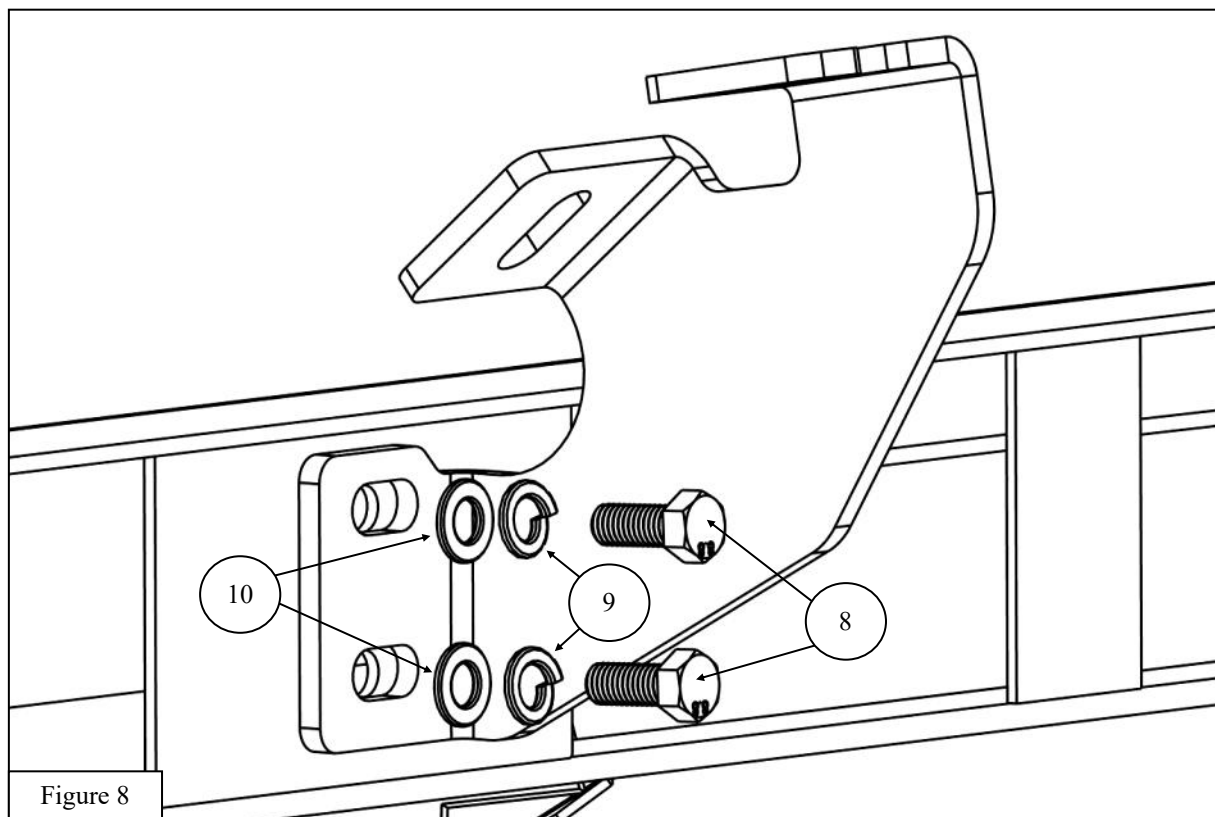
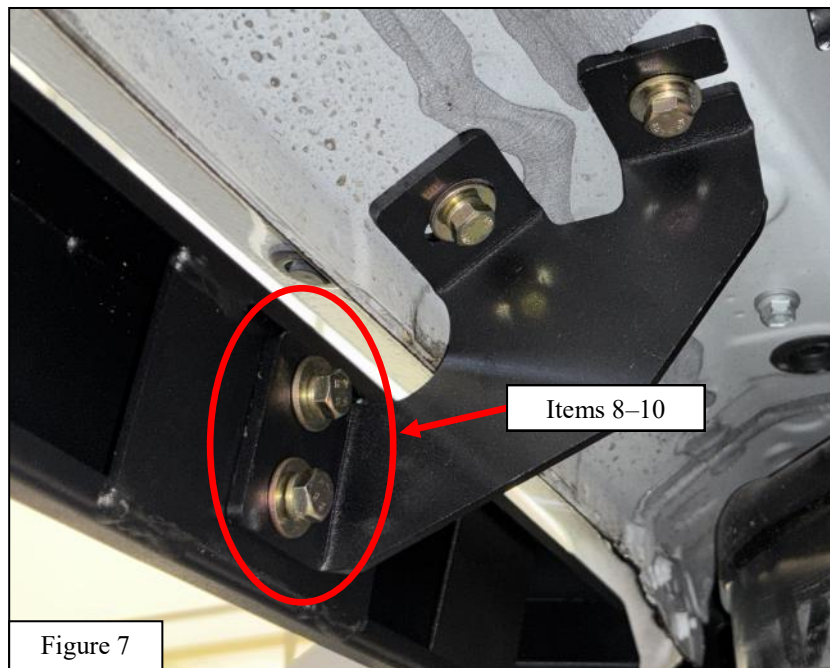


Figure 6



6. Repeat steps 2-5 on the passenger side of the vehicle with the passenger side brackets (**items 4 and 6**).
7. Loosely install the HDX Drop Steps (**items 1 and 2**) to the mounting brackets using the supplied M8 hardware (**items 8-10**). See **Figures 7 and 8**.



8. Align and adjust the running boards as needed. Tighten and torque all M8 hardware to 15-18 ft-lbs.

Figure 9

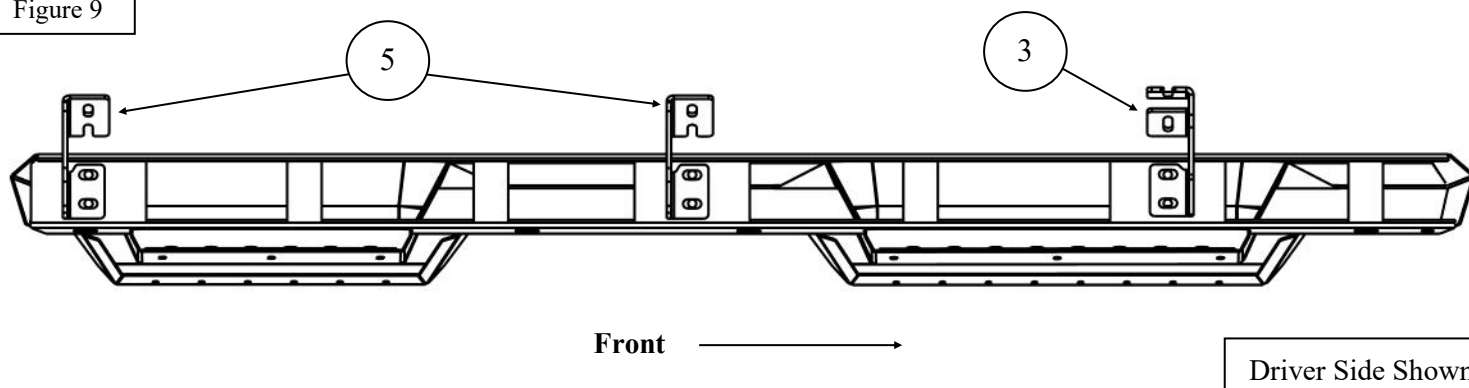
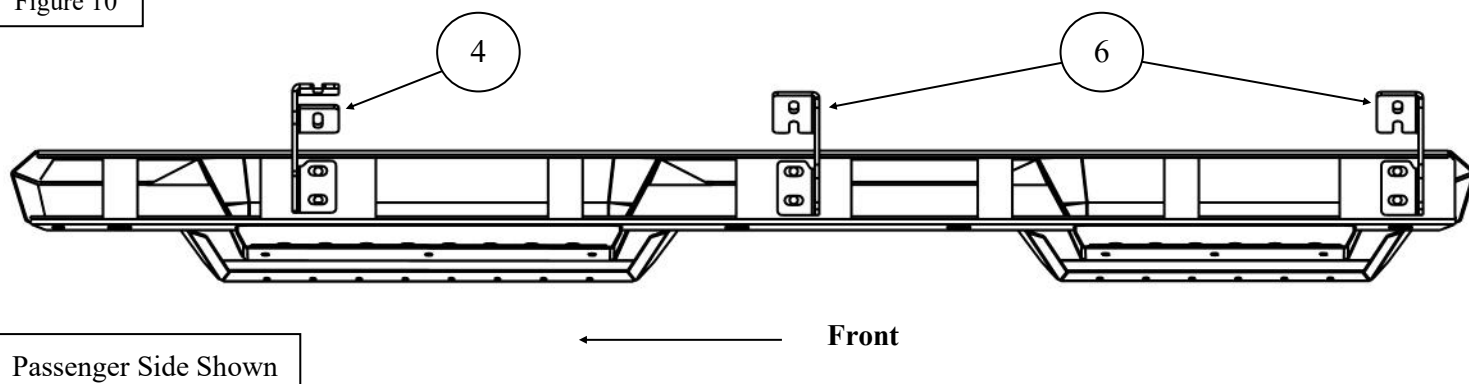


Figure 10



Westin Automotive Products, Inc.  
320 W. Covina Blvd  
San Dimas, Ca. 91773

## INSTALLATION COMPLETE



### CARE INSTRUCTIONS

- REGULAR WAXING IS RECOMMENDED. DO NOT USE ANY TYPE OF POLISH OR WAX THAT MAY CONTAIN ABRASIVES.
- STAINLESS STEEL PRODUCTS CAN BE CLEANED WITH MILD SOAP AND WATER. STAINLESS STEEL POLISH SHOULD BE USED TO POLISH SMALL SCRATCHES.
- GLOSS BLACK FINISHES SHOULD BE CLEANED WITH MILD SOAP AND WATER.



Westin Automotive Products, Inc.  
320 W. Covina Blvd  
San Dimas, Ca. 91773

Thank you for choosing Westin products  
for additional installation assistance please call  
Customer Service (800) 793-7846  
[www.westinautomotive.com](http://www.westinautomotive.com)



## WARNING



Failure to follow these instructions could lead to death, personal injury, and / or property damage.

Failure to follow these instructions could lead to death, personal injury, and / or property damage.

### FASTENERS:

All Westin supplied fasteners must be utilized and installed in accordance with the installation instructions and apply torque to the specifications as defined. **DOUBLE CHECK ALL FASTENERS BEFORE INITIAL USE, AND PERIODICALLY IN THE FUTURE TO ENSURE PROPER FUNCTION AND SAFETY.**

### DRILLING:

Most Westin products do not require drilling for installation. If drilling is defined as required, use caution when drilling a vehicle. **FAILURE TO REVIEW AN AREA TO BE DRILLED MAY RESULT IN PERSONAL INJURY AND/OR INJURY TO OTHERS AS WELL AS VEHICLE DAMAGE.**

### EYE PROTECTION:

**ALWAYS WEAR SAFETY GLASSES OR GOGGLES DURING THE INSTALLATION PROCESS TO AVOID PERSONAL INJURY.**

### MAXIMUM TOWING/CARRYING CAPACITY: (if applicable)

The Westin Receiver Hitches will have a visible tow rating label affixed directly on the product. User should never exceed the vehicle manufacturers maximum tow and weight rating regardless of the capacity of the hitch. **FAILURE TO FOLLOW THESE GUIDELINES WILL VOID THE WESTIN WARRANTY AND MAY RESULT IN PERSONAL INJURY AND/OR INJURY TO OTHERS AS WELL AS VEHICLE DAMAGE.**

### FOR CALIFORNIA RESIDENTS ONLY-PROP 65 WARNING:

Some products may contain chemicals such as DEHP, which can cause cancer, birth defects or other reproductive harm. For more info go to [www.p65warnings.ca.gov](http://www.p65warnings.ca.gov)



Westin Automotive Products, Inc.  
320 W. Covina Blvd  
San Dimas, Ca. 91773