



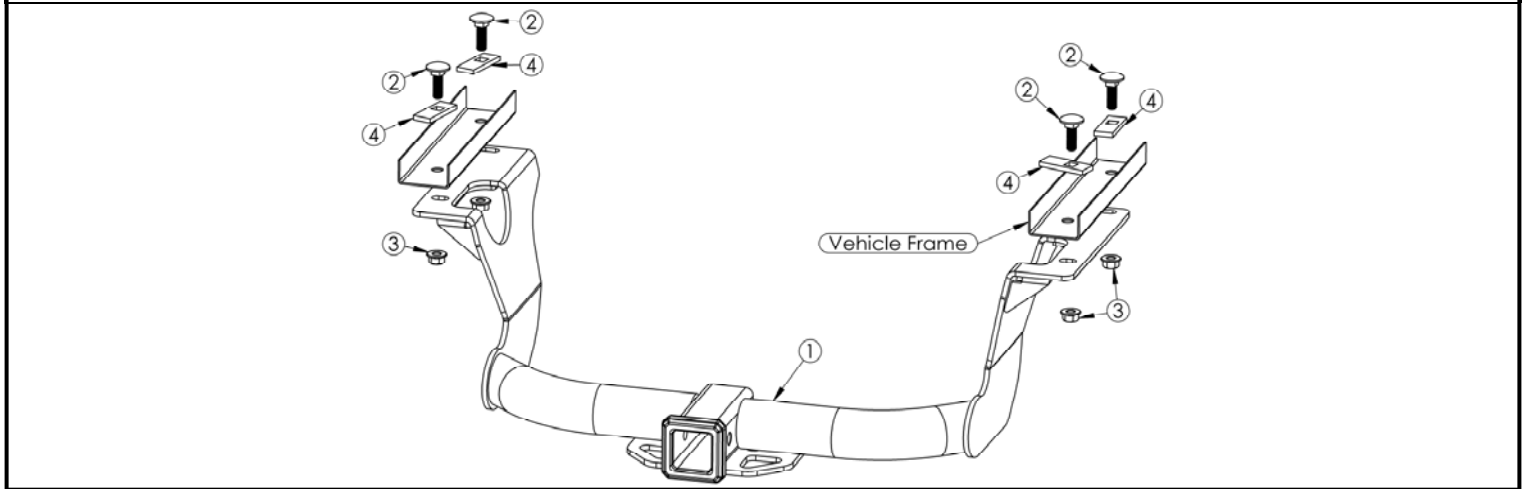
AUTOMOTIVE PRODUCTS, INC.

INSTALLATION INSTRUCTIONS

CLASS III RECEIVER HITCH
APPLICATION:
2014-2015 Subaru Outback
PART NUMBER:
65-1555

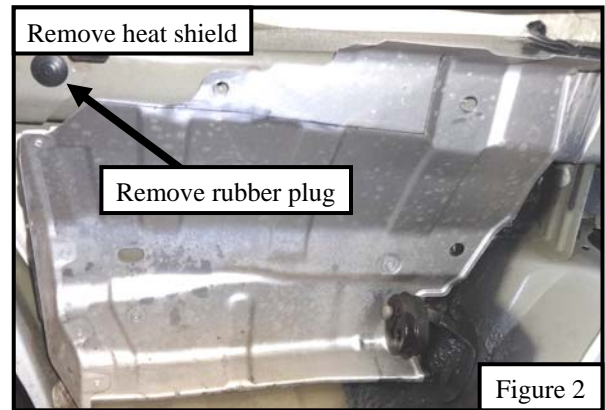
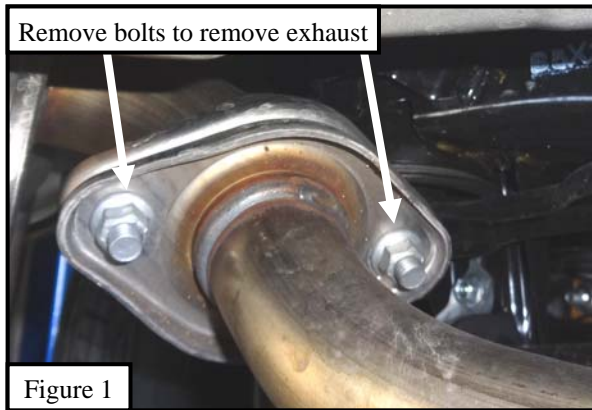
ITEM	QUANTITY	DESCRIPTION	TOOLS NEEDED
1	1	RECEIVER HITCH ASSEMBLY	18MM SOCKET
2	4	M12 CARRIAGE BOLT (YELLOW ZINC)	18MM WRENCH
3	4	M12 FLANGE HEX NUT (YELLOW ZINC)	RATCHET
4	4	BOLT PLATE (YELLOW ZINC)	TORQUE WRENCH
5	2	M12 FISH WIRE	DRILL

ANTI-SEIZE LUBRICANT MUST BE USED ON ALL STAINLESS STEEL FASTENERS TO PREVENT THREAD DAMAGE AND GALLING



PROCEDURE

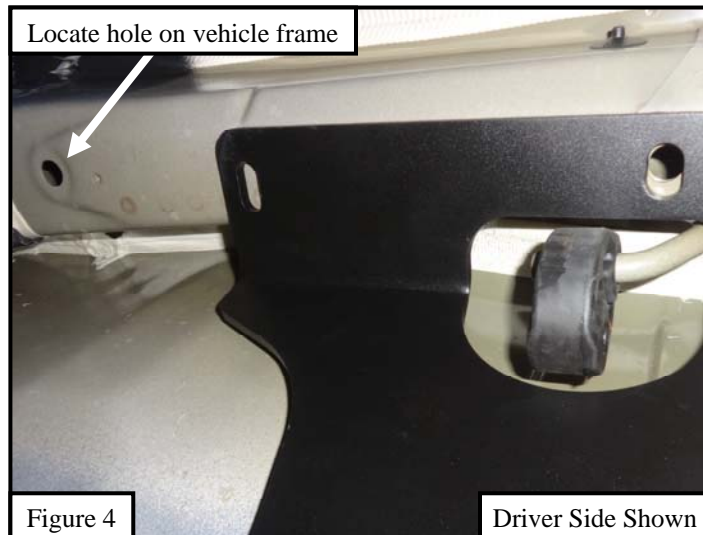
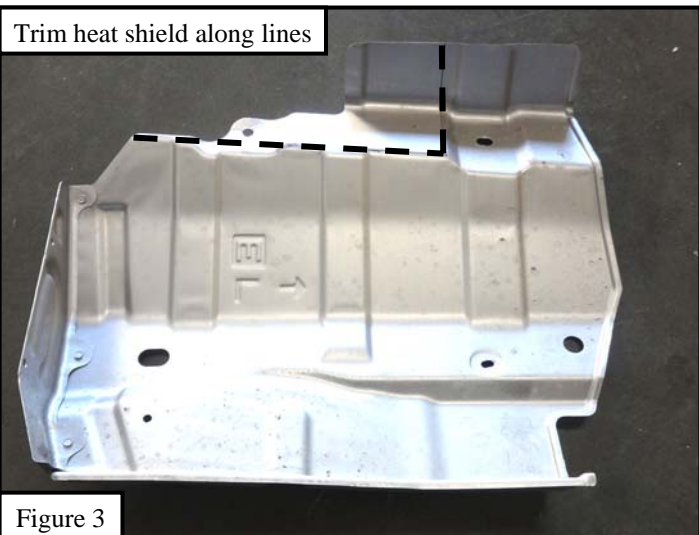
1. Remove contents from box, verify if all parts listed are present and free from damage. Carefully read and understand all instructions before attempting installation.
Failure to identify damage before installation could lead to a rejection of any claim.
2. Start installation by removing the exhaust and removing two bolts. **See Figure 1.**
3. Remove the heat shield by removing the screws that attach it to the frame body and remove rubber plug. **See Figure 2.**



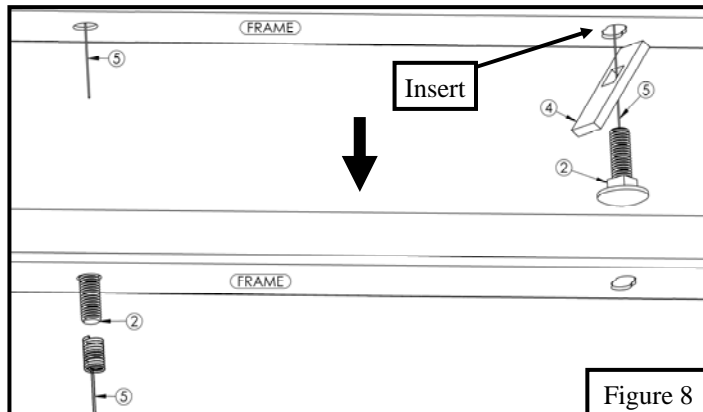
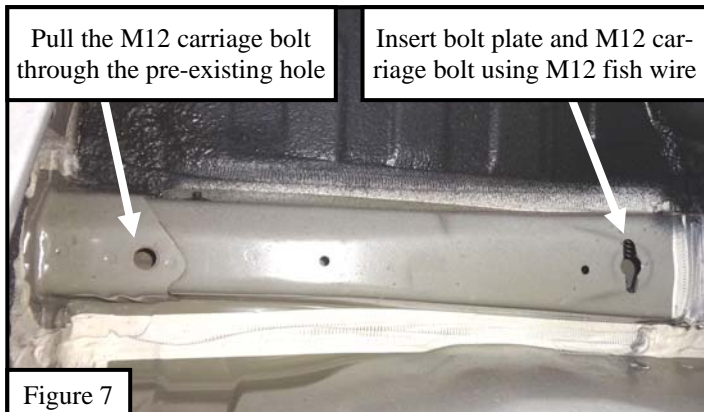
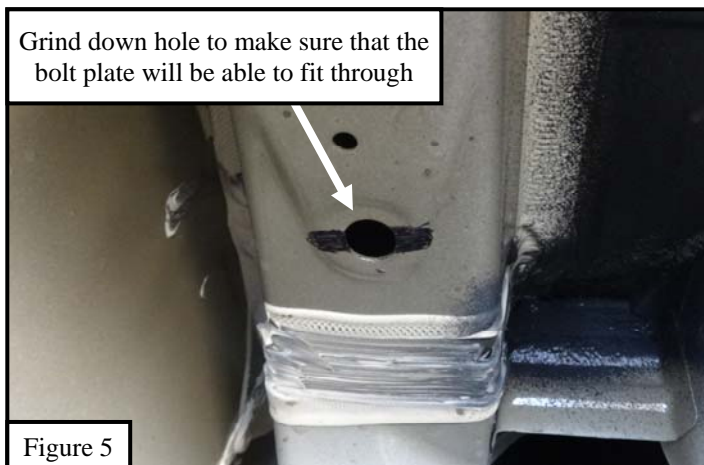
Westin Automotive Products, Inc.
320 W. Covina Blvd
San Dimas, Ca. 91773

Thank you for choosing Westin products
for additional installation assistance please call
Customer Service (800) 793-7846
www.westinautomotive.com

4. Trim heat shield. Refer to Figure 3.
5. Starting on either side, locate pre-existing hole on the vehicle frame shown in Figure 4.

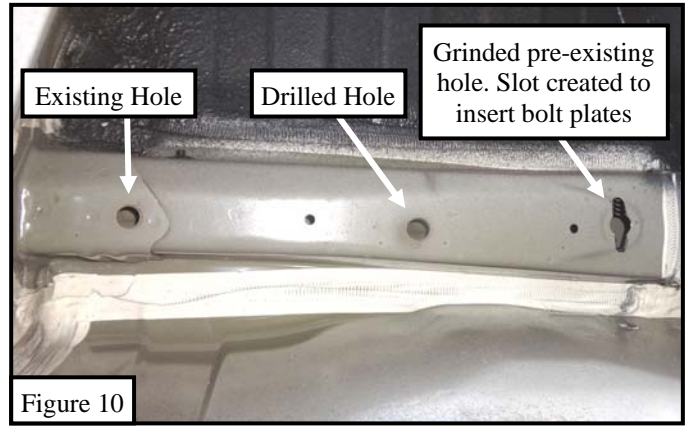
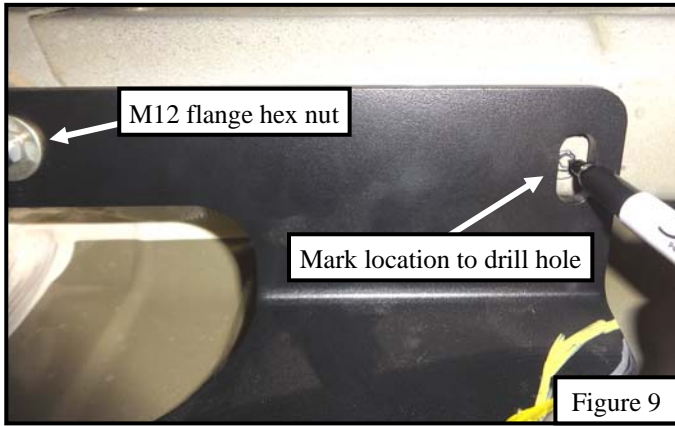


6. Grind pre-existing hole into a slot that is wide enough for the provided M12 bolt plates to fit through. Refer to Figure 5.
7. Locate (1) bolt plate, (1) M12 carriage bolt and (1) M12 fish wire. Insert the bolt plate with the M12 carriage bolt through the previously grinded slot. See Figure 6. Pull through the slot and out through the front pre-existing hole. See Figures 7 and 8.

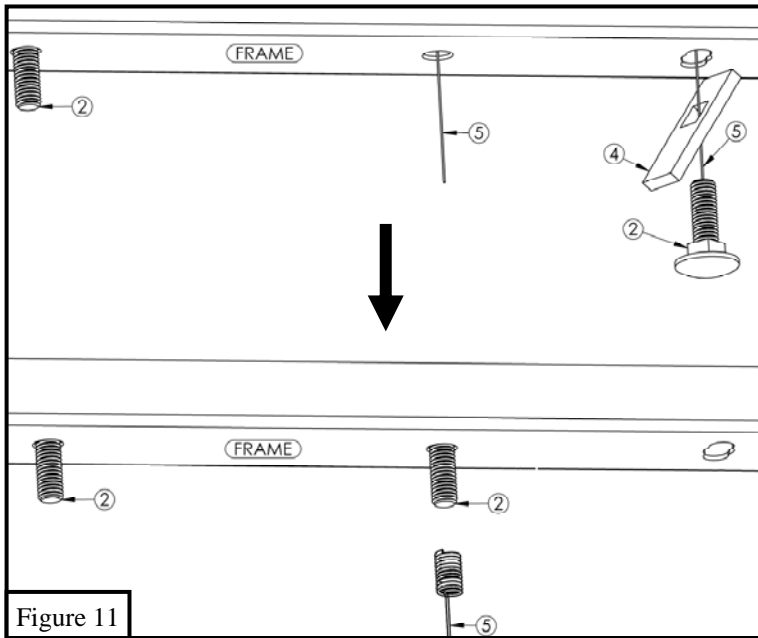


Westin Automotive Products, Inc.
320 W. Covina Blvd
San Dimas, Ca. 91773

8. Repeat **Steps 5 - 7** for other side.
9. Locate the receiver hitch assembly and align it along the vehicle frame with the front slot being aligned with the previously installed M12 carriage bolts in the vehicle's frame. Secure using the provided (2) M12 flange hex nuts. On the rear slot mark location to drill hole. **See Figure 9.**
10. Remove the receiver hitch assembly and then drill, on both the driver and passenger side, 9/16" holes. **See Figure 10.**



11. Locate (2) M12 carriage bolts, (2) bolt plates and M12 fish wire. Insert the M12 carriage bolts with the bolt plates using the M12 fish wire through the previously grinded hole with slot and out through the recently drilled hole. For both sides. **See Figure 11.**
12. Align the receiver hitch assembly with the four carriage bolts and loosely secure using (4) M12 flange hex nuts.
13. Align and adjust the receiver hitch as necessary and then torque M12 fasteners to 60 ft-lbs.



CARE INSTRUCTIONS

- REGULAR WAXING IS RECOMMENDED. DO NOT USE ANY TYPE OF POLISH OR WAX THAT MAY CONTAIN ABRASIVES.
- STAINLESS STEEL PRODUCTS CAN BE CLEANED WITH MILD SOAP AND WATER. STAINLESS STEEL POLISH SHOULD BE USED TO POLISH SMALL SCRATCHES.
- GLOSS BLACK FINISHES SHOULD BE CLEANED WITH MILD SOAP AND WATER.



SIGNATURE OF QUALITY

AUTOMOTIVE PRODUCTS, INC.

WARNINGS & NOTICES FOR THE INSTALLATION OF WESTIN TOWING PRODUCTS - CLASS III RECEIVER HITCH

NOTICE

Westin Receiver Hitches are designed to accommodate a 2"- square receiver draw bar rated for class III/IV towing. Closely follow all Westin Installation Instructions for the proper installation of product. Improper installation can result in death, serious injury, and/or product and vehicle damage. In the operation of these products, it is imperative to observe precautions for your personal safety and the safety of others.



WARNING



Failure to follow these instructions could lead to death, personal injury, and / or property damage.

FASTENERS:

All Westin supplied fasteners must be utilized and installed in accordance with the installation instructions and apply torque to the specifications as defined. **DOUBLE CHECK ALL FASTENERS BEFORE INITIAL USE, AND PERIODICALLY IN THE FUTURE TO ENSURE PROPER FUNCTION AND SAFETY.**

DRILLING:

Most Westin products do not require drilling for installation. If drilling is defined as required, use caution when drilling a vehicle. **FAILURE TO REVIEW AN AREA TO BE DRILLED MAY RESULT IN PERSONAL INJURY AND/OR INJURY TO OTHERS AS WELL AS VEHICLE DAMAGE.**

EYE PROTECTION:

ALWAYS WEAR SAFETY GLASSES OR GOGGLES DURING THE INSTALLATION PROCESS TO AVOID PERSONAL INJURY.

MAXIMUM TOWING/CARRYING CAPACITY:

The Westin Receiver Hitches will have a visible tow rating label affixed directly on the product. User should never exceed the vehicle manufacturers maximum tow and weight rating regardless of the capacity of the hitch. **FAILURE TO FOLLOW THESE GUIDELINES WILL VOID THE WESTIN WARRANTY AND MAY RESULT IN PERSONAL INJURY AND/OR INJURY TO OTHERS AS WELL AS VEHICLE DAMAGE.**



Westin Automotive Products, Inc.
320 W. Covina Blvd
San Dimas, Ca. 91773