



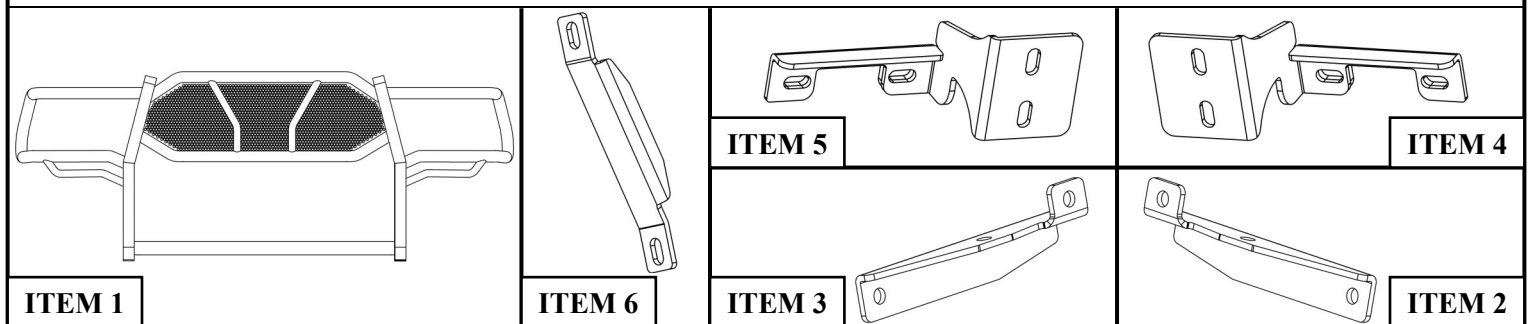
INSTALLATION INSTRUCTIONS

AUTOMOTIVE PRODUCTS,

HDX GRILLE GUARD
APPLICATION:
2009-2016 Dodge Ram 1500
PART NUMBER:
57-3540, 57-3545

ITEM	QUANTITY	DESCRIPTION	TOOLS NEEDED
1	1	GRILLE GUARD	10MM SOCKET
2,3	2	LOWER MOUNTING BRACKET, DRIVER (2) AND PASSENGER (3)	16MM SOCKET
4,5	2	FRAME MOUNTING BRACKET, DRIVER (4) AND PASSENGER (5)	16MM WRENCH
6	2	SUPPORT STRAP	18MM SOCKET
7	6	M12 BUTTON HEAD BOLTS (STAINLESS)	18MM WRENCH
8	14	M12 FLAT WASHERS (STAINLESS)	FLAT HEAD SCREWDRIVER
9	6	M12 LOCK WASHERS (STAINLESS)	
10	6	M12 HEX NUT (STAINLESS)	HAMMER
11	2	M12 X 140 HEX BOLT	UTILITY KNIFE
12	2	M12 LARGE FLAT WASHER	RATCHET
13	2	M12 X 30 HEX BOLT	TORQUE WRENCH
14	4	M12 HEX NUT	
15	6	M12 FLAT WASHER	
16	4	M12 LOCK WASHER	
17	4	M12 X 60 HEX BOLT	

ANTI-SEIZE LUBRICANT MUST BE USED ON ALL STAINLESS STEEL FASTENERS TO PREVENT THREAD DAMAGE AND GALLING



PROCEDURE

- Remove contents from box, verify if all parts listed are present and free from damage. Carefully read and understand all instructions before attempting installation.
Failure to identify damage before installation could lead to a rejection of any claim.
- Remove the lower bumper front valance by removing the two M6 bolts at the ends and prying out the center pins of the plastic retaining clips with a flat head screwdriver. **See Figure 2.**
- On vehicles without factory tow hooks:** For 2009 - 2012 vehicles, remove the plastic fill panel on the front bumper by removing the 2-piece plastic clips at the top of the panel. **See Figure 1.** **NOTE:** Use a flat-blade screwdriver to first pop the center pin out to release the clip. For 2013+ vehicles remove the two plastic bumper inserts that are attached with (4) M6 fasteners from the inside of the bumper. Next, from behind the driver side of the front bumper, remove the (2) hex nuts on the bottom of the bumper bracket securing the bumper to the frame. **See Figure 3.**

4. **On vehicles with factory tow hooks:** Start the installation on the driver side, behind the front bumper. Remove the factory tow hook. **See Figure 2.** Remove the two hex nuts on the bottom of the bumper bracket securing the 2-bolt tow hook mounting bracket to the frame.
5. Drive the (2) carriage bolts in the bumper bracket out of the bracket by striking the end of the bolts with a hammer. **See Figure 4.** Discard the tin retaining washers. Insert the driver side Mounting Bracket into the opening in the front of the bumper and line up the (2) mounting holes with the holes in the bumper bracket. For vehicles without tow hooks re-use the factory carriage bolts and nuts to secure these brackets. For vehicles with tow hooks they must be replaced with the supplied (2) M12 x 60mm hex bolts and (2) M12 flat washers through the driver side Frame Mounting Bracket and bumper bracket (the factory nuts will be re-used). **See Figure 5.** Re-install the factory tow hook before attaching the nuts. Attach all hardware loosely.
6. Remove the factory M10 flange bolt from the bottom of the bumper located beneath the area of the tow hook pocket. Use the factory bolt to loosely attach the lower mounting bracket. **See Figure 6.**

2009 - 2012 Factory Clips (2013+ Rams use bolts from the backside of the bumper)

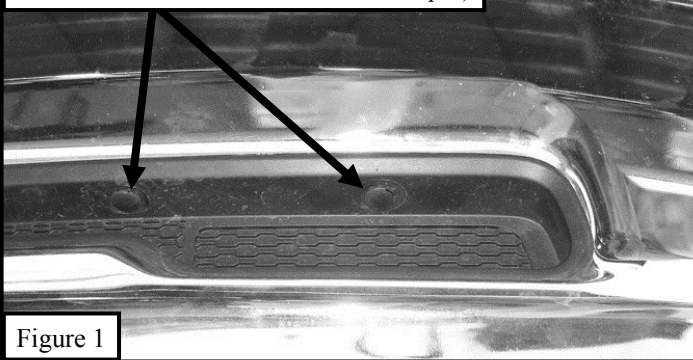


Figure 1

Remove tow hook, (2) factory hex nuts and tow hook bracket.

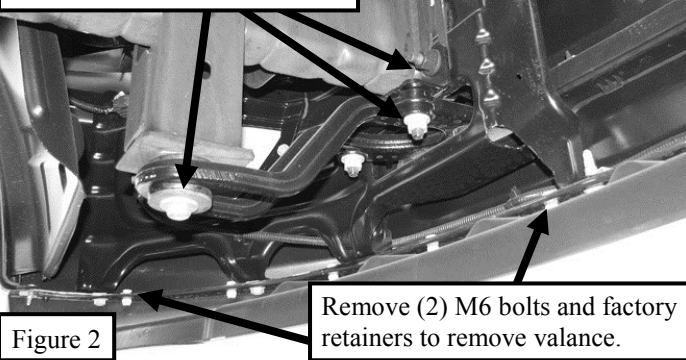


Figure 2

Remove (2) M6 bolts and factory retainers to remove valance.

Remove (2) factory hex nuts.

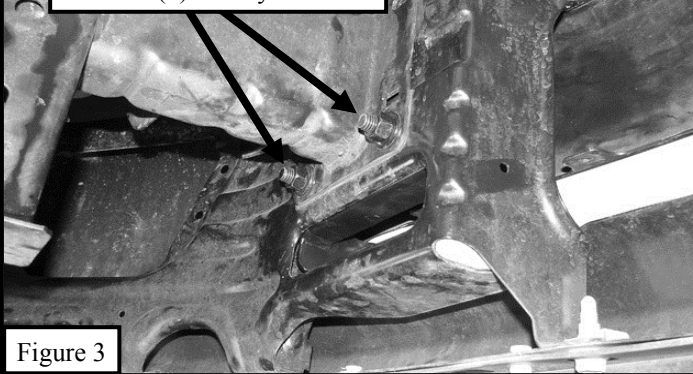


Figure 3

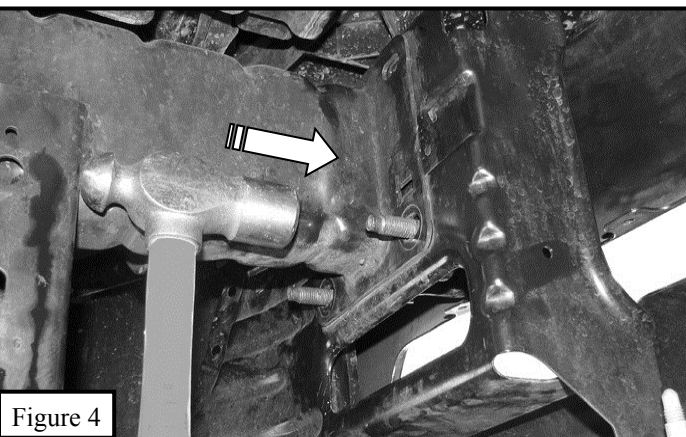


Figure 4

Attach Frame Bracket (Use factory carriage bolts for vehicles without tow hooks. Driver Side Shown.)

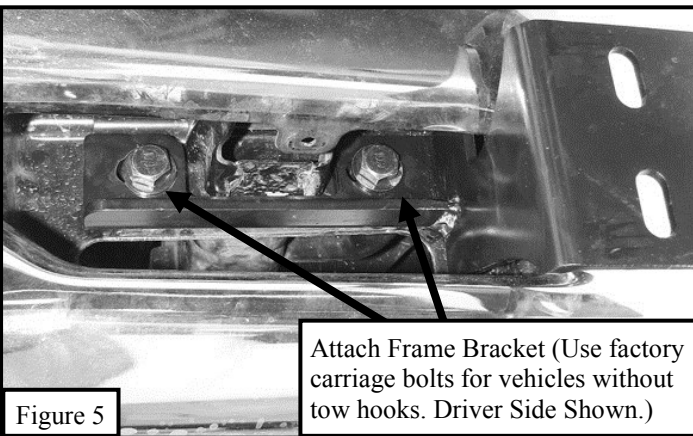


Figure 5

Attach Lower Mount Bracket to Bumper Bolt (Pass Side Shown)

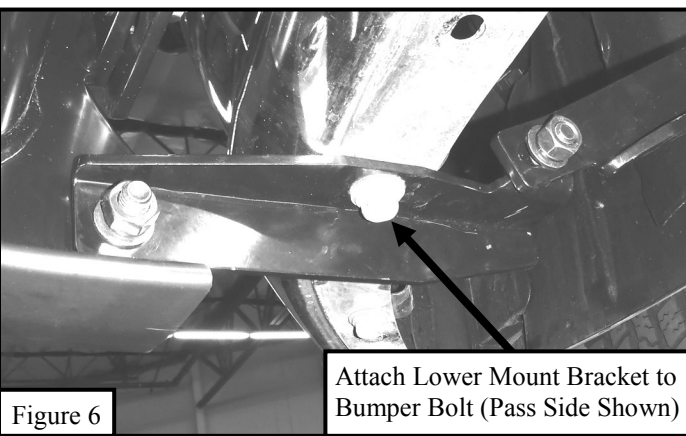


Figure 6



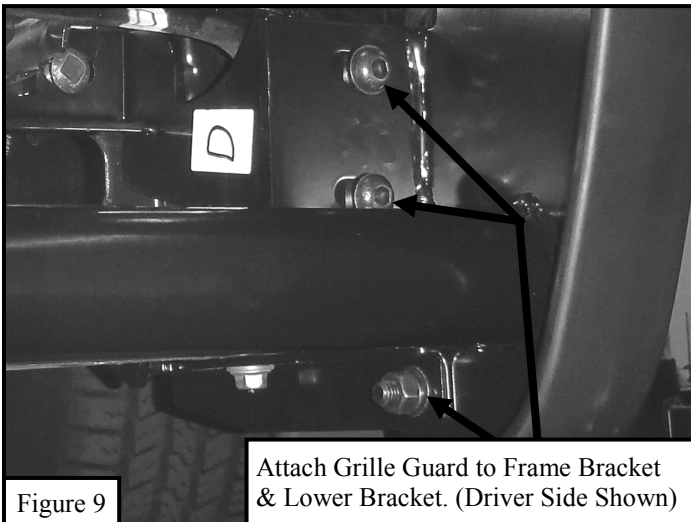
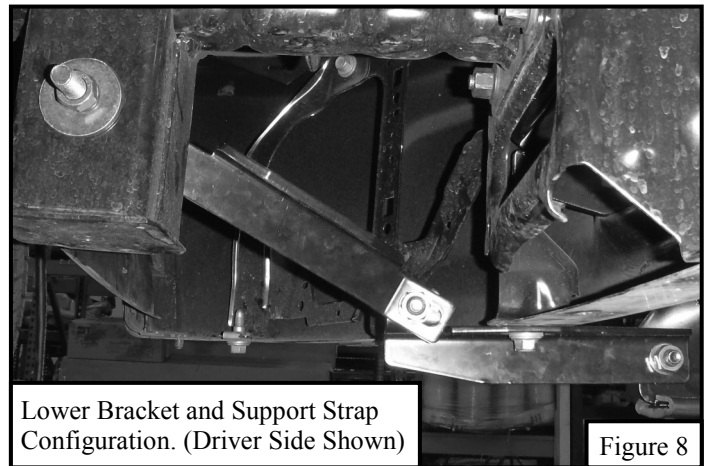
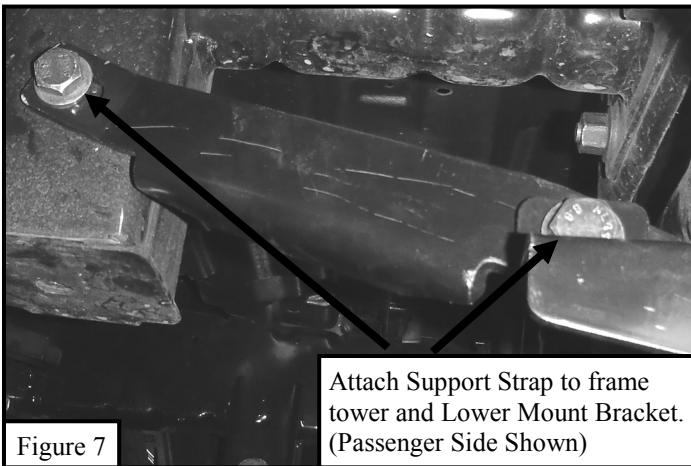
Westin Automotive Products, Inc.
320 W. Covina Blvd
San Dimas, Ca. 91773

Thank you for choosing Westin products
for additional installation assistance please call
Customer Service (800) 793-7846

www.westinautomotive.com

DATE: 9/2/16

7. Use (1) M12x140 hex bolt, (1) M12 large flat washer, (1) M12 reg. flat washer, (1) M12 lock washer, and (1) M12 hex nut to loosely attach the Support Strap to the side of the frame tower. The M12 large flat washer should be placed on the side of the tower opposite the support strap. **See Figures 7 and 8.**
8. Repeat **Steps 2 - 6** for passenger side Mounting Bracket installation.
9. With assistance, position the Grille Guard up to the Frame Mounting Brackets and the Lower Mounting Brackets. Use the included (4) M12 button head bolts, (8) M12 flat washers, (4) M12 lock washers and (4) M12 hex nuts to loosely attach the Grille Guard to the Frame Mounting Brackets. **See Figure 9.**
10. Align the holes and loosely attach the Grille Guard to the Bottom Mounting Brackets using (2) M12 button head bolts, (4) M12 flat washers, (2) M12 lock washers and (2) M12 hex nuts. **See Figure 9.**
11. With assistance, align and adjust the Grille Guard and tighten all hardware, including the tow hook hardware. **On vehicles without factory tow hooks:** The plastic fill panel in the front bumper removed in **Step 3** may be discarded or can be reinstalled but will require trimming to clear the Frame Mounting Brackets. Once modified, use the factory hardware to re-install (on 2013+ vehicles only (2) of the (4) bolts may be re-used).
12. Trim the lower valance to fit around the lower mounting brackets and re-install using factory hardware.



CARE INSTRUCTIONS

- REGULAR WAXING IS RECOMMENDED. DO NOT USE ANY TYPE OF POLISH OR WAX THAT MAY CONTAIN ABRASIVES.
- STAINLESS STEEL PRODUCTS CAN BE CLEANED WITH MILD SOAP AND WATER. STAINLESS STEEL POLISH SHOULD BE USED TO POLISH SMALL SCRATCHES.
- GLOSS BLACK FINISHES SHOULD BE CLEANED WITH MILD SOAP AND WATER.



Westin Automotive Products, Inc.
320 W. Covina Blvd
San Dimas, Ca. 91773

Thank you for choosing Westin products
for additional installation assistance please call
Customer Service (800) 793-7846

www.westinautomotive.com

Westin

SIGNATURE OF QUALITY

AUTOMOTIVE PRODUCTS, INC.



WARNING



Failure to follow these instructions could lead to death, personal injury, and / or property damage.

FASTENERS:

All Westin supplied fasteners must be utilized and installed in accordance with the installation instructions and apply torque to the specifications as defined. **DOUBLE CHECK ALL FASTENERS BEFORE INITIAL USE, AND PERIODICALLY IN THE FUTURE TO ENSURE PROPER FUNCTION AND SAFETY.**

DRILLING:

Most Westin products do not require drilling for installation. If drilling is defined as required, use caution when drilling a vehicle. **FAILURE TO REVIEW AN AREA TO BE DRILLED MAY RESULT IN PERSONAL INJURY AND/OR INJURY TO OTHERS AS WELL AS VEHICLE DAMAGE.**

EYE PROTECTION:

ALWAYS WEAR SAFETY GLASSES OR GOGGLES DURING THE INSTALLATION PROCESS TO AVOID PERSONAL INJURY.

MAXIMUM TOWING/CARRYING CAPACITY:

The Westin Receiver Hitches will have a visible tow rating label affixed directly on the product. User should never exceed the vehicle manufacturers maximum tow and weight rating regardless of the capacity of the hitch. **FAILURE TO FOLLOW THESE GUIDELINES WILL VOID THE WESTIN WARRANTY AND MAY RESULT IN PERSONAL INJURY AND/OR INJURY TO OTHERS AS WELL AS VEHICLE DAMAGE.**

Westin
SIGNATURE OF QUALITY

Westin Automotive Products, Inc.
320 W. Covina Blvd
San Dimas, Ca. 91773