



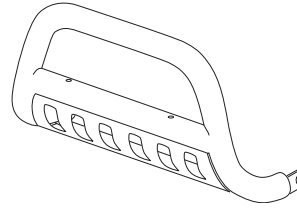
INSTALLATION INSTRUCTIONS

APPLICATION: 2005-07 TOYOTA TACOMA

AUTOMOTIVE PRODUCTS, INC.

BULL BAR ASSEMBLY

31-5600



ITEM	QTY	CONTENTS	TOOLS
1	1	BULL BAR ASSEMBLY	14MM SOCKET
2	2	BRACKETS- PASSENGER/DRIVER SIDE	17MM SOCKET
3	4	M10*30MM HEX HEAD BOLT	5/8" SOCKET
4	10	M10 FLAT WASHERS	5/8" WRENCH
5	2	M10*120MM HEX HEAD BOLT	17MM WRENCH
6	4	SPACER PLATE	RATCHET
7	6	M10 HEX NUT	TORQUE WRENCH
8	2	M10 FLAT WASHER	
9	10	M10 LOCK WASHER	

PRODUCT INSTALLATION:

1. Verify all parts & hardware are present. Please read Instruction Sheets before installing. **NOTE:** No drilling required.
2. Determine passenger and driver brackets. From underneath vehicle, remove tow hooks. Tow hooks will not be reinstalled. Locate the two factory studs that hold the bumper support to the frame. Remove the nuts and install mount bracket onto the studs and replace factory nuts. Insert the 10mmx120mm bolt through the frame and into the mount bracket. Secure with 2 spacer plates with M10 Flat Washer, Lock Washers and M10 Hex Nut, as shown. **SEE FIGURE 1.**
3. Attach Bull Bar to brackets using 10mmx30mm fasteners as shown. Level and adjust Bull Bar as desired. Torque 3/8" fasteners and 10mm bumper nuts to 30 ft/lbs.

OPTIONAL LIGHT INSTALLATION: Insert the threaded stud on base of the light through hole in cross tube. Using a ratchet, extension and socket for correct size of nut supplied, insert through large clearance hole in bottom of cross tube. Thread nut and washers on stud and tighten. **NOTE:** A short socket, not a deep-socket, works best to get the nut started. If not installing lights, plug mount holes with rubber caps provided.

NOTE: It may be necessary to remove/relocate front license plate and license plate bracket. It is not required, but strongly recommended. If local/state laws requires a license plate, license plate relocation kit 32-0055 is available.

PRODUCT CARE:

Westin products have a high quality finish that must be cared for like any other exposed finish on the vehicle. Protect the finish with a non-abrasive automotive wax, (e.g. Pure Carnauba) on a regular basis. The use of any soap, polish or wax that contains an abrasive is detrimental, as the compounds scratch the finish and open it to corrosion.

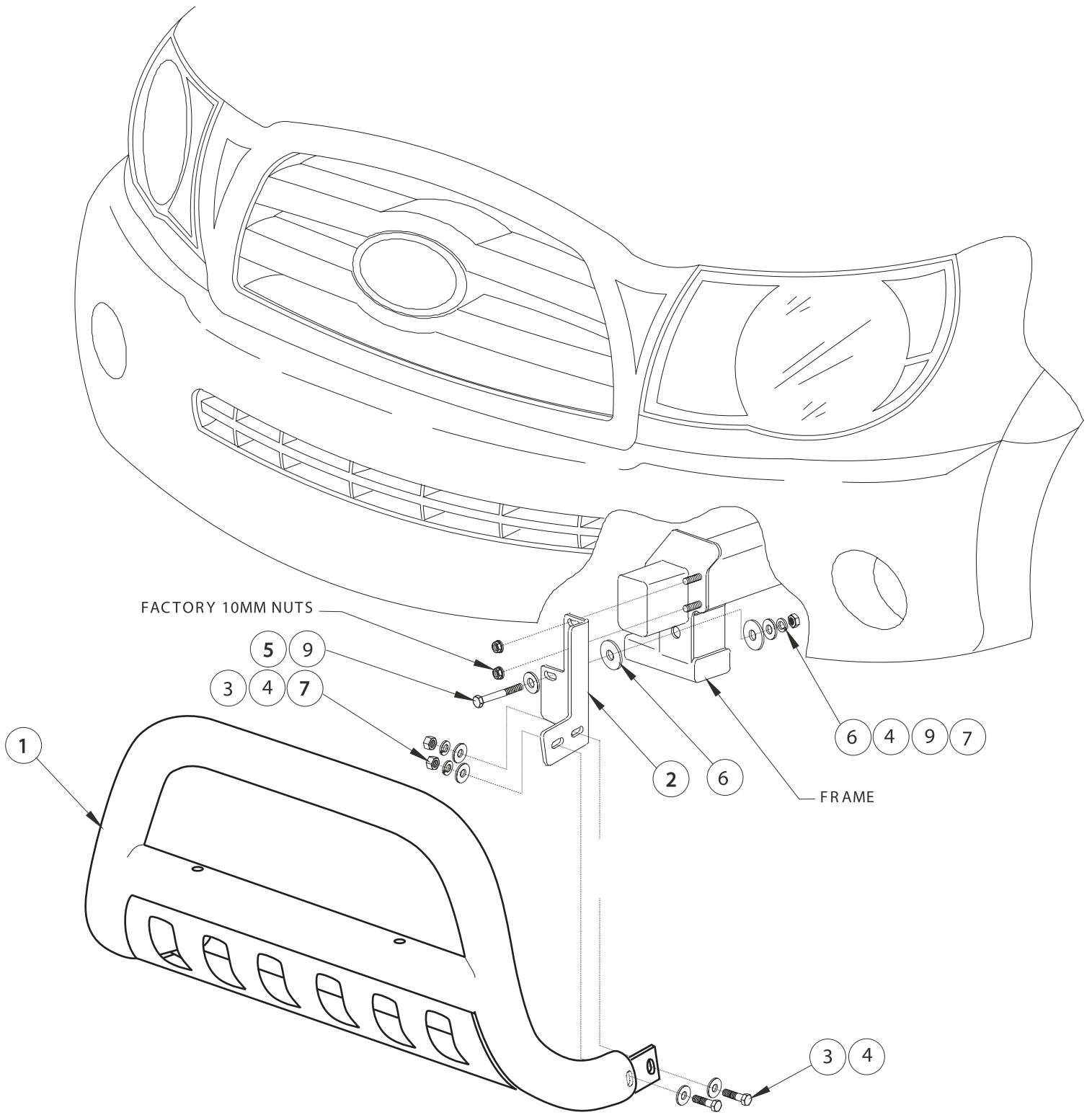


FIGURE 1