



STEP BOARD KIT #27-1315 INSTALLATION INSTRUCTIONS

APPLICATION: 2001-02 HONDA PASSPORT
2001-04 ISUZU RODEO

AUTOMOTIVE PRODUCTS, INC.

**CAUTION:
BEFORE BEGINNING
THIS INSTALLATION
PROCEDURE.
READ THOUGH
INSTRUCTIONS
CAREFULLY AND
COMPLETELY**

HARDWARE KIT

| | | | |
|---|-----------------------------|----|------------------------------|
| 8 | MOUNT BRACKET | 16 | 5/16 X 3/4" SQUARE HEAD BOLT |
| 4 | PINCH WELD SPACER PLATE | 32 | 5/16 SAE FLAT WASHER |
| 4 | 5/16 X 1 1/4" HEX HEAD BOLT | 24 | 5/16 HEX NYLOCK NUT |
| 4 | 5/16 X3/4" HEX HEAD BOLT | 16 | TEK SCREW |

- STEP 1. Remove the contents from the box and check for any damage. Verify all parts against the parts list. Read and understand instructions completely before beginning installation.
- STEP 2. Measure, and mark clearly, from the front of pinch weld towards the rear of vehicle for bracket positions. Suggested locations at 14 1/2", 33 1/4", 49 1/2" and 61 1/2". SEE FIGURE 1.
- STEP 3. Drill 5/16" holes as marked on pinch weld. Drill each hole in pinch weld so they are centered vertically.
- STEP 4. Under the vehicle near the first 2 hole locations you will see 2 black body plugs, remove these. SEE FIGURE 2.



FIGURE 1



FIGURE 2

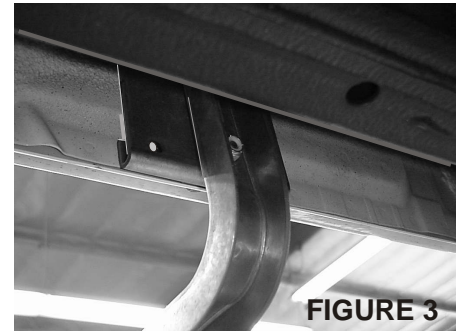


FIGURE 3

- STEP 5. Install Mount Bracket and Pinch Plate Weld Spacer Plate in location 1 & 2 using 5/16 x 1 1/4" hex head bolt, flat washer & nylock nut, leave loose. NOTE: There are 2 Mount Brackets & Pinch Weld Spacer Plates per side. SEE FIGURE 3.
- STEP 6. Install Mount Bracket in location 3 & 4 using 5/16 x 3/4" hex head bolt, flat washer & nylock nut, leave loose. SEE FIGURE 4.
- STEP 7. Place running board upside down along side vehicle and install square head bolts, 4 in outer slot and 4 in inner slot, align the bolts with Bracket. If installing lighted running boards, use the center slot to run wiring harness. Position running board on Bracket and fasten using 8 flat washers and 8 nylock nuts. Leave loose. SEE FIGURE 5.



FIGURE 4

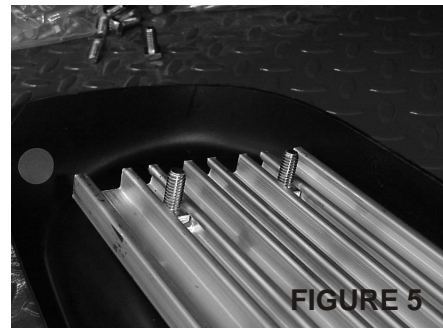
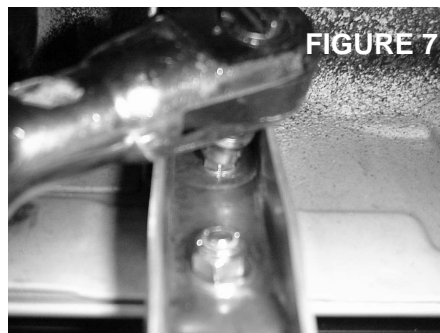
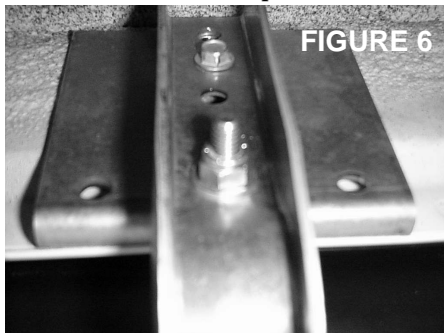


FIGURE 5

- STEP 8. Adjust the height of running board to the vehicle. Make sure this is the best location for the vehicle then tighten Mount Brackets to pinch weld.
- STEP 9. Now that the height of running board is set use 2 Tek screws in slots on top of each Bracket to secure to vehicle. SEE FIGURE 6 & 7.
- STEP 10. Adjust running board from side to side, centering the running board to the vehicle then tighten the nylock nuts.
- STEP 11. Repeat same installation steps for the other side to complete installation.



INSTALLING THE LIGHTS & WIRING HARNESS TO YOUR STEP BOARDS (FOR LIGHTED VERSION)

- STEP 12. A three piece wiring harness is included with the Lighted Step Board. The harness includes four (4) light sockets and three plugs. Carefully plan a wire route from the right side Step Board to the left. Then choose a pass-through point (floor board to inner cab) for the wire harness. NOTE: WESTIN RECOMMENDS YOU USE A PROFESSIONAL TO INSTALL THE WIRING HARNESS. SEE STEPS 14-18.
- STEP 13. Attach wire harness and lights. Be sure rubber seals are in place before installation. The rubber grommet around the red and blue wires going into rear sockets should be completely inserted and recessed about 1/4" NOTE: To ensure the longevity of your lights, remove the bulb and placing a small amount of white grease into the sockets and replace the bulb. Place a small amount of RTV Silicone where the wires go into the socket. This keeps the sockets dry and adds to longevity. Screw lights into each end of the board and run conduit in center slot of aluminum base board. This will hold harness in place.
- STEP 14. GENERAL TIPS FOR WIRING HARNESS INSTALLATION. NOTE: The light wiring harness installation requires splicing into vehicles electrical system.
- STEP 15. After choosing a pass-through point for cab harness(STEP 12.), follow this sequence: Route long lead harness to short lead harness and plug connectors securely. NOTE: Avoid areas of excess heat, vibration, pinch or rotation when securing harness to vehicle.
- STEP 16. Plug open-ended connection into unused connection. Either connector on short lead board harness will work. Route open ended wire harness through truck cab. Find the closest position to door light switch lead wire. Seal pass-through holes with silicone or permanent sealer.
- STEP 17. Connect positive and negative lead wires to vehicle sources (dome light or courtesy light under dash). Use vehicle door switch for ground lead source and appropriate positive lead for supply. NOTE: Always use a fused positive (+) power source.
- STEP 18. Test circuit for proper function and connection before tape sealing all exposed wires.

Finish protection - Westin products have a high quality finish that must be cared for like any other exposed finish on the vehicle. Protect the finish with a non-abrasive automotive wax (pure carnauba, for example) on a regular basis. The use of cleaner wax or any compound which contains an abrasive is detrimental, as the compounds scratch the finish and open it to corrosion.



Westin Automotive Products, Inc.
5200 N. Irwindale Ave. Suite 220
Irwindale, Ca. 91706

Thank You for choosing Westin products
For additional installation assistance please call
Customer service (800) 793- 7846 or (507) 375-3559