

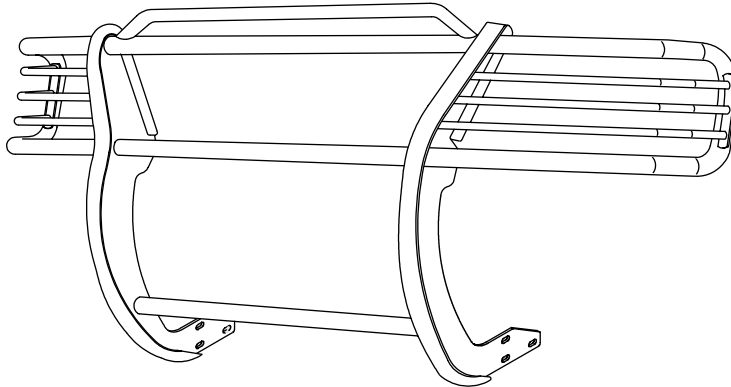


INSTALLATION INSTRUCTIONS

APPLICATION: 1997-01 FORD F-150, F-250 LIGHT DUTY & EXPEDITION 4X4 ONLY

AUTOMOTIVE PRODUCTS, INC.

SPORTSMAN
ASSEMBLY
40-0245



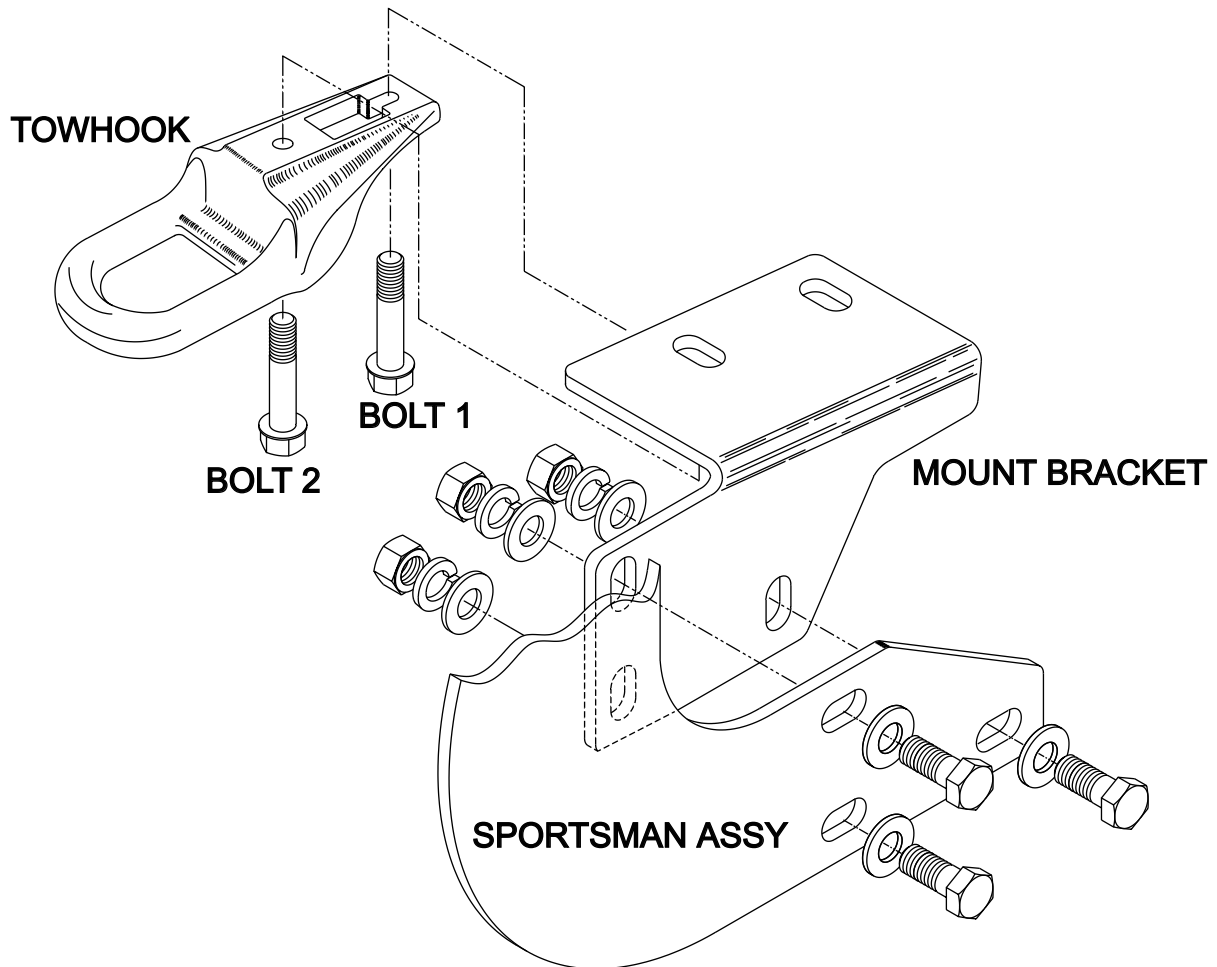
QTY	PARTS KIT CONTENTS DESCRIPTION	TOOLS REQUIRED
6	1/2-13 X 1.25" HEX HEAD BOLT	3/4" SOCKET
12	1/2" SAE FLAT WASHER	3/4" WRENCH
6	1/2" HELICAL SPLIT LOCK WASHER	RATCHET
6	1/2-13 HEX NUT	15MM SOCKET
1	MOUNT BRACKET (DRIVER)	TORQUE WRENCH
1	MOUNT BRACKET (PASSENGER)	

- STEP 1. Remove the contents from the box and check for ant damage. Verify all parts against parts list.
- STEP 2. Read and understand instructions completely before installation.
- STEP 3. Remove the tow hook by removing bolt 2 and loosening bolt 1, then slide tow hook toward rear and remove.
- STEP 4. Remove bolt 1, making sure the nut plate inside frame stays aligned with the frame hole for bolt 1.
- STEP 5. Hang support bracket in position by partially threading bolt 1 (without the tow hook) into nut plate.
- STEP 6. Align the nut plate by rotating bolt 1 back and forth so that bolt 2 can be inserted.
- STEP 7. Position the tow hook in place by hanging it by the slotted end first, then insert bolt 2.
- STEP 8. Tighten mount bolts so that support bracket is loose.
- STEP 9. Follow step 3 through 8 to install the opposite side support bracket.
- STEP 10. Place cardboard under front of vehicle. Lay Sportsman on cardboard with front side down.

- STEP 11. Slide unit back so that the rearmost slots align with the rearmost slots on the brackets. Fasten together the rear slots on both sides using bolt kit provided. Tighten finger tight.
- STEP 12. Rotate Sportsman up toward vehicle until remaining slots are aligned. Insert fasteners and tighten finger tight.
- STEP 13. Level and adjust unit. Tighten and torque all bolts to:
- Tow Hook bolts = 75 FT. LBS.
 - 1/2" bolts = 65 FT. LBS.

SPECIAL INSTRUCTIONS:

To prevent paint scuffing on fenders, tape sides of fender.



INSTALLATION VIEW OF DRIVER SIDE - PASSENGER SIDE OPPOSITE

Finish protection - Westin products have a high quality finish that must be cared for like any other exposed finish on the vehicle. Protect the finish with a non-abrasive automotive wax (pure carnauba, for example) on a regular basis. The use of cleaner wax or any compound which contains an abrasive is detrimental, as the compounds scratch the finish and open it to corrosion.