



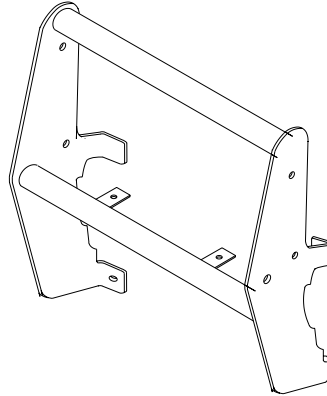
INSTALLATION INSTRUCTIONS

APPLICATION: 1988 GM C/K SERIES REGULAR & EXTENDED CAB

AUTOMOTIVE PRODUCTS, INC.

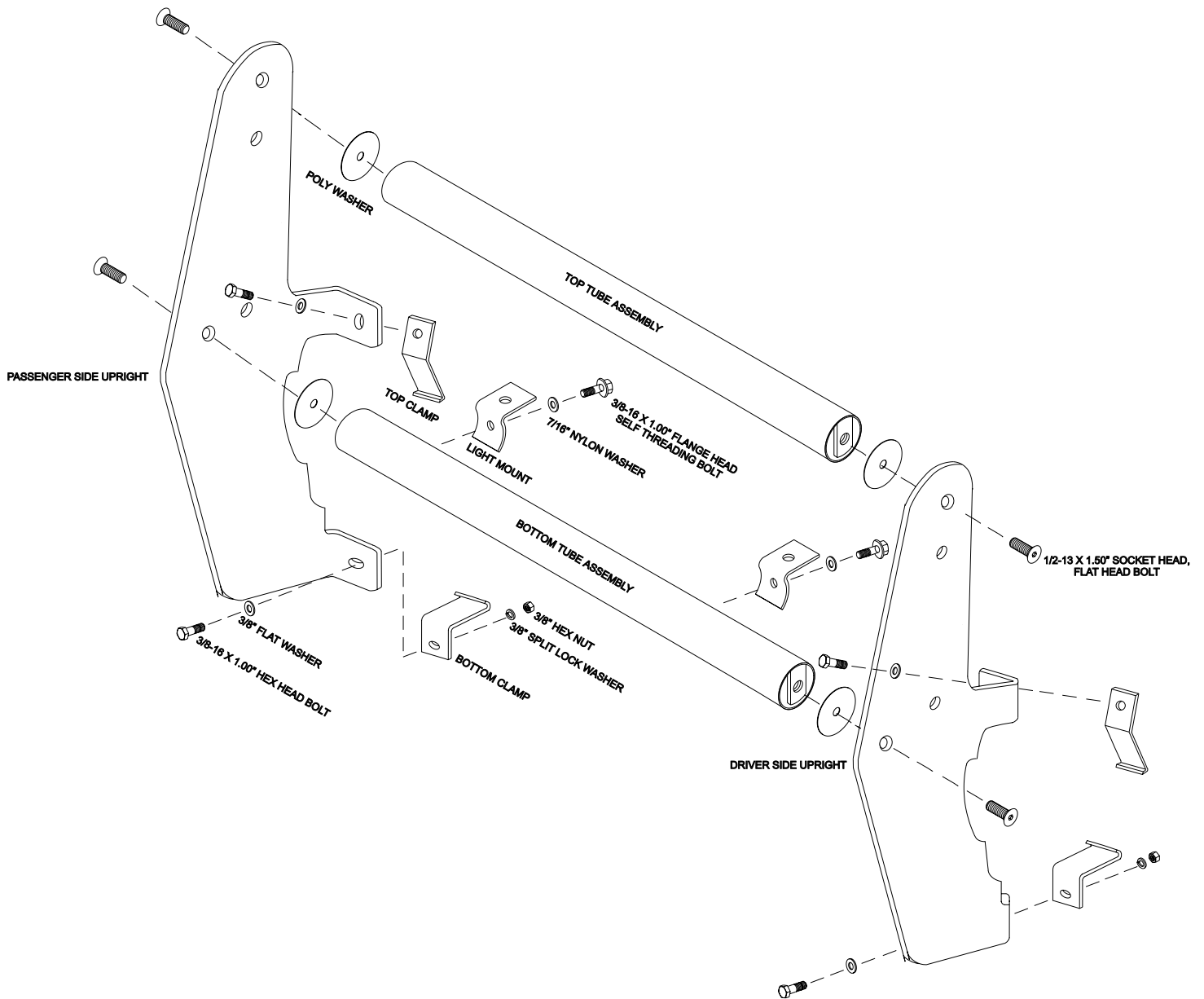
PUSH BAR ASSEMBLIES

36-1100
36-1105



QTY	PARTS KIT CONTENTS		TOOLS REQUIRED
	DESCRIPTION		
1	UPRIGHT, PASSENGER		5/16 ALLEN WRENCH 9/16" WRENCH RATCHET
1	UPRIGHT, DRIVER		
1	BOTTOM TUBE ASSEMBLY		
1	TOP TUBE ASSEMBLY		
4	POLY WASHER		
2	TOP CLAMP		
2	BOTTOM CLAMP		
2	LIGHT MOUNT		
4	1/2-13 X 1.50" SOCKET HEAD, FLAT HEAD BOLT		
4	3/8-16 X 1.00" HEX HEAD BOLT		
4	3/8-16" HEX NUT		
4	3/8" SPLIT LOCK WASHER		
4	3/8" FLAT WASHER		
2	3/8-16 FLANGE HEAD SELF THREADING BOLT		
2	7/16" ID NYLON WASHER		
NOTE: SOME FASTENERS MAY NOT BE USED.			

- STEP 1. Remove the contents from the box and check for any damage. Verify all parts against the parts list.
- STEP 2. Read and understand instructions completely before beginning installation.
- STEP 3. Determine Driver and Passenger Uprights and Top and Bottom Tube Assemblies. The indents in the uprights go to the outside. The Bottom Tube has tapped holes for attaching the light mounts..
- STEP 4. Fasten Light Mounts to Bottom Tube using (2) 3/8- 16 x 1.00" Self-threading Bolt and (2) 7/16" Nylon Washers as shown in Figure 1.
- STEP 5. Attach Top Tube and Bottom Tube Assemblies to Uprights using the (4) 1/2-13 x 1.50" Socket Head, Flat Head Bolts. Finger tighten only.
- STEP 6. Hook Top Clamps over bumper at approximate location of upright. Position Assembled Push Bar up to bumper and bolt to top clamps using (2) 3/8-16 x 1.00" Hex Head Bolts and (2) 3/8" Flat Washers. Finger tighten.
- STEP 7. Center Push Bar on vehicle. Slide Bottom Clamps between bumper and air dam. Attach Bottom Clamps to Uprights using the remaining 3/8-16 x 1.00" Hex Head Bolts, 3/8" Flat Washers and 3/8" Hex Nuts.
- STEP 8. Level Push Bar on vehicle and tighten all hardware securely.



Finish protection - Westin products have a high quality finish that must be cared for like any other exposed finish on the vehicle. Protect the finish with a non-abrasive automotive wax (pure carnauba, for example) on a regular basis. The use of cleaner wax or any compound which contains an abrasive is detrimental, as the compounds scratch the finish and open it to corrosion.



Westin Automotive Products, Inc.
5200 N. Irwindale Ave. Suite 220
Irwindale, Ca. 91706

Thank You for choosing Westin products
For additional installation assistance please call
Customer service (800) 793-7846 or (507) 375-3559