



INSTRUCTIONS-INSTRUCCIONES-CONSIGNES

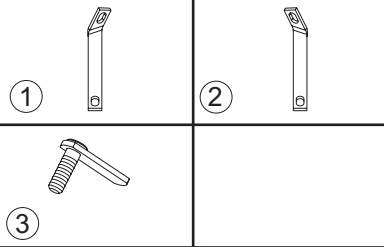
APPLICATION: 2004-UP DODGE DURANGO

APLICACIÓN: DODGE DURANGO, 2004 Y SUPERIOR

AUTOMOTIVE PRODUCTS, INC.

APPLICATION: DODGE DURANGO 2004 ET PLUS

SUPPLEMENTAL PARTS KIT
25-2642
FOR
25-2630
25-2635
26-2630
26-2635



ITEM	QTY	CONTENTS - CONTENIDO - CONTENU	TOOLS - HERRAMIENTA - OUTILS
1,2	2	SUPPORT BRACE, PASSENGER (1) AND DRIVER (2)	3/4" SOCKET 9/16" SOCKET 9/16" WRENCH RATCHET TORQUE WRENCH NOTE: NOT ALL FASTENERS WILL BE USED.
3	2	BOLT PLATE ASSEMBLY	
4	2	M12-1.75 X 120MM HEX HEAD BOLT	
5	2	M12-1.75 X 110MM HEX HEAD BOLT	
6	2	1/2-13 X 2.00" HEX HEAD BOLT	
7	2	1/2-13 X 1.75" HEX HEAD BOLT	
8	8	1/2" FLAT WASHER	
9	8	1/2" LOCK WASHER	
10	2	3/8" FLAT WASHER	
11	2	3/8" LOCK WASHER	
12	2	3/8-16 HEX NUT	
13	2	PLASTIC WASHER	

- STEP 1. Remove the contents from box and check for damage. Verify all parts are present. Read instructions completely before beginning.
- STEP 2. Remove existing fasteners connecting step bars to front brackets and discard.
- STEP 3. Determine passenger and driver support braces. Attach plastic washer to bolt plate. Insert bolt plate into slotted hole on the bottom of frame. Attach support brace to bolt plate using 3/8" fasteners as shown. **SEE FIGURES 1,2, AND 3.** Leave loose. Attach support brace to the back side of the front bracket and to step bar tube using the 1/2-13 x 2.00" bolt, 1/2" lock washer, and 1/2" flat washer as shown. Leave loose. **SEE FIGURES 2 AND 3.**
- NOTE:** Support brace will not sit flat against the bracket or the frame. When the bolts are tightened, the support brace will conform to the bracket and the frame.
- STEP 4. Repeat installation for passenger side.
- STEP 5. Make sure step bars are properly aligned with vehicle. Torque all 1/2" fasteners to 65 Ft.Lbs. and 3/8" fasteners to 30 Ft.Lbs.

FINISH PROTECTION

Westin products have a high quality finish that must be cared for like any other exposed finish on the vehicle. Protect the finish with a non-abrasive automotive wax, (e.g. Pure Carnauba) on a regular basis. The use of any soap, polish or wax that contains an abrasive is detrimental, as the compounds scratch the finish and open it to corrosion.

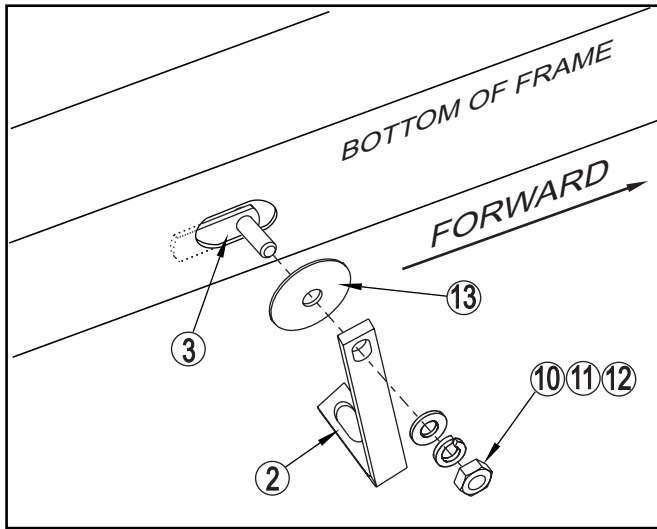


FIGURE 1
DRIVER SIDE SHOWN,
PASSENGER SIDE OPPOSITE

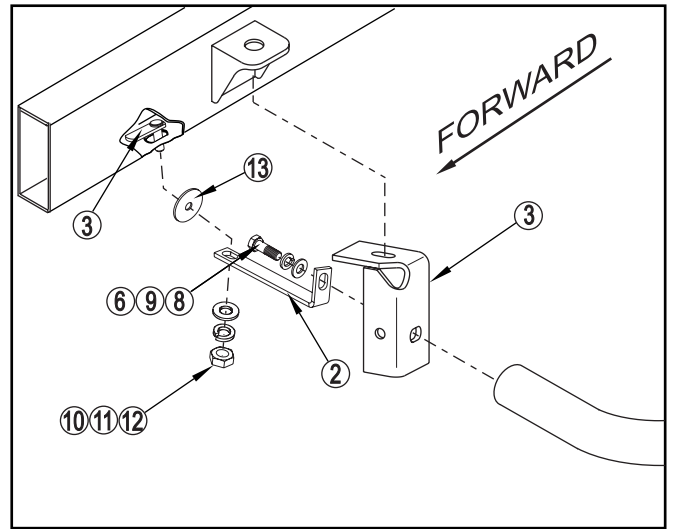


FIGURE 2
DRIVER SIDE SHOWN,
PASSENGER SIDE OPPOSITE

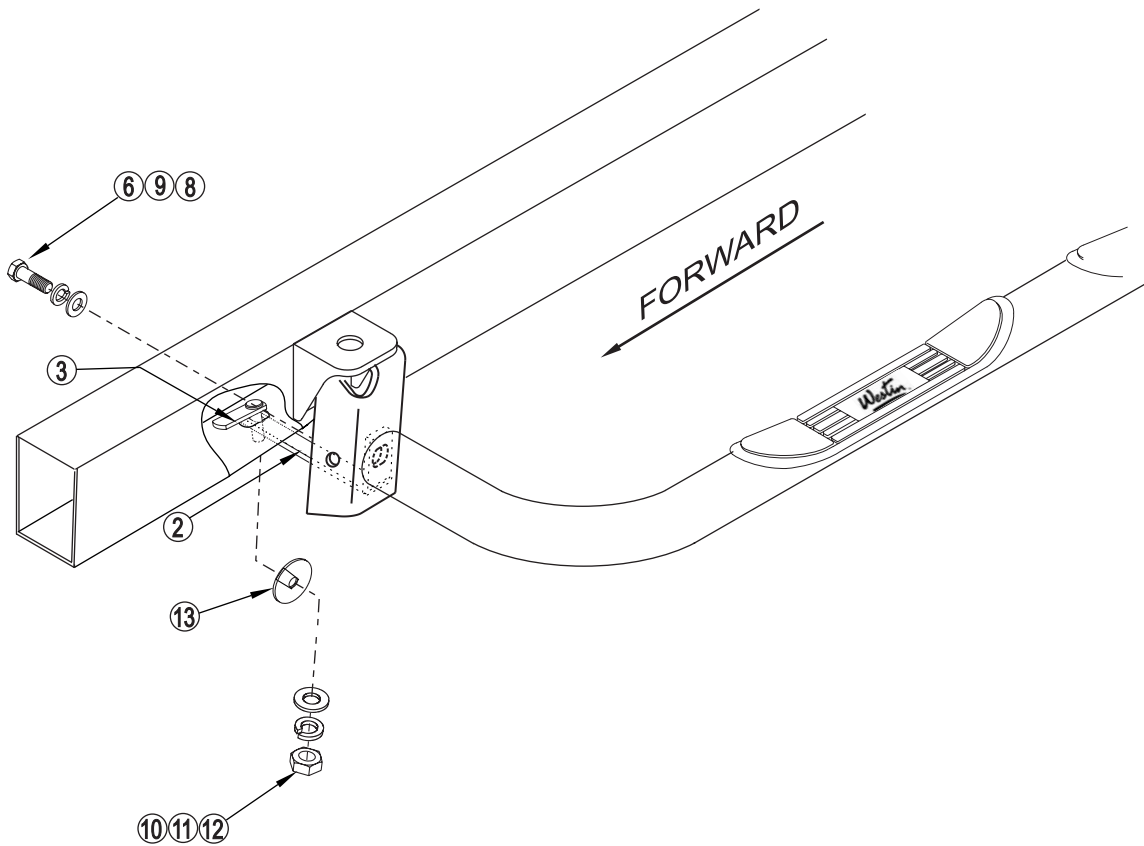


FIGURE 3
DRIVER SIDE SHOWN,
PASSENGER SIDE OPPOSITE