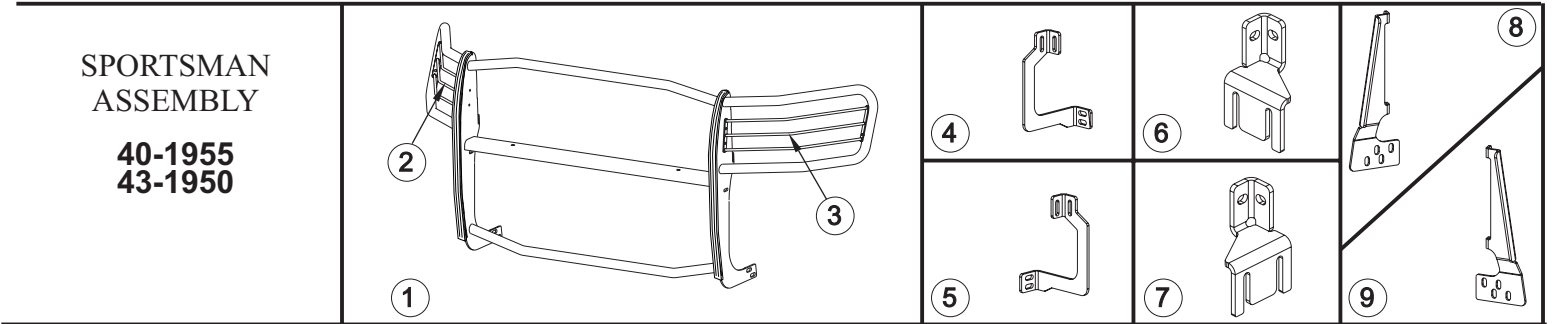




INSTALLATION INSTRUCTIONS

APPLICATION: 2006-07 DODGE RAM 1500/2500/3500
2008 DODGE RAM 4500/5500

AUTOMOTIVE PRODUCTS, INC.



PARTS KIT CONTENTS

ITEM	QTY	DESCRIPTION	ITEM	QTY	DESCRIPTION
1	1	SPORTSMAN ASSEMBLY	14	4	3/8-16 X 1.25" HEX HEAD BOLT, STAINLESS STEEL
2,3	2	LIGHT GUARD ASSEMBLY, PASSENGER(2) & DRIVER (3)	15	2	3/8-16 X 1.25" BUTTON HEAD BOLT, STAINLESS STEEL
4,5	2	TOP BRACKET, PASSENGER (4) & DRIVER(5)	16	12	3/8" SAE FLAT WASHER, STAINLESS STEEL
6,7	2	TOP SUPPORT BRACKET, PASSENGER(6) & DRIVER (7)	17	6	3/8" SPLIT LOCK WASHER, STAINLESS STEEL
8,9	2	BOTTOM BRACKET,PASSENGER(8) & DRIVER (9)	18	6	3/8-16 HEX NUT, STAINLESS STEEL
10	4	1/2-13 X 1.25" HEX HEAD BOLT, STAINLESS STEEL	19	4	M12-1.75 REVERSIBLE LOCK NUT
11	8	1/2" SAE FLAT WASHER, STAINLESS STEEL	20	4	M12 FLAT WASHER
12	4	1/2" SPLIT LOCK WASHER, STAINLESS STEEL	21	2	REFLECTIVE TAPE
13	4	1/2-13 HEX NUT, STAINLESS STEEL			(FOR CHROME ASSEMBLIES ONLY.)

TOOLS REQUIRED

9/16" SOCKET	9/16" WRENCH	18MM SOCKET	18MM WRENCH	19MM SOCKET
19MM WRENCH	3/4" SOCKET	3/4" WRENCH	5/32" HEX WRENCH	13MM WRENCH
RATCHET	TORQUE WRENCH			

- STEP 1. Remove the contents from box and check for damage. Verify all parts are present. Read instructions completely before beginning.
NOTE: For 4500/5500 Series. Remove tow hooks by removing the front and rear bolts that go through the frame. The tow hooks will not be reinstalled.
- STEP 2. Attach light guard assemblies as shown. **SEE FIGURE 1.**
- STEP 3. Determine passenger and driver bottom mount brackets. Attach as shown. **SEE FIGURE 2.**
- STEP 4. Open vehicle hood, on frame cross member loosen two bottom factory 8mm bolts on each end. Fasten top support bracket on each side. Attach top brackets to top support brackets using 3/8" fasteners as shown. **SEE FIGURE 4 AND 5.**
- STEP 5. Place Sportsman up to vehicle and align slots. Fasten to bottom brackets using 1/2" fasteners and to top brackets using 3/8" fasteners. Trim lower valance as necessary. Leave loose. **SEE FIGURE 2, 3, AND 5.**
- STEP 6. Center and level Sportsman on vehicle and tighten all fasteners. Recommended torque values are 43 Ft.Lbs. for 1/2" stainless steel fasteners, 23 Ft. Lbs. for existing 8mm fasteners, 20 Ft. Lbs. for 3/8" stainless steel fasteners and 65 Ft.Lbs. for M12 yellow zinc fasteners. **CAUTION:** Make sure vehicle hood will clear unit and top support brackets when opening and closing.
- STEP 7. For chrome assemblies. If light glare is being experienced off the wings of the Sportsman, anti-reflective tape has been supplied to reduce glare. With headlights on, note where the reflection is concentrated on the wing.

ITEM	QTY.	DESCRIPTION
1	8	1/4-20 X 1.00" BUTTON HEAD BOLT
2	8	1/4" FLAT WASHER
3	4	1/4" INTERNAL TOOTH LOCK WASHER
4	4	1/4-20 NYLON NUT
5	8	RUBBER WASHER

NOTE: ALL FASTENERS MAY NOT BE USED.

FIGURE 1
LIGHT GUARD INSTALLATION
DRIVERS SIDE SHOWN, PASSENGER SIDE OPPOSITE

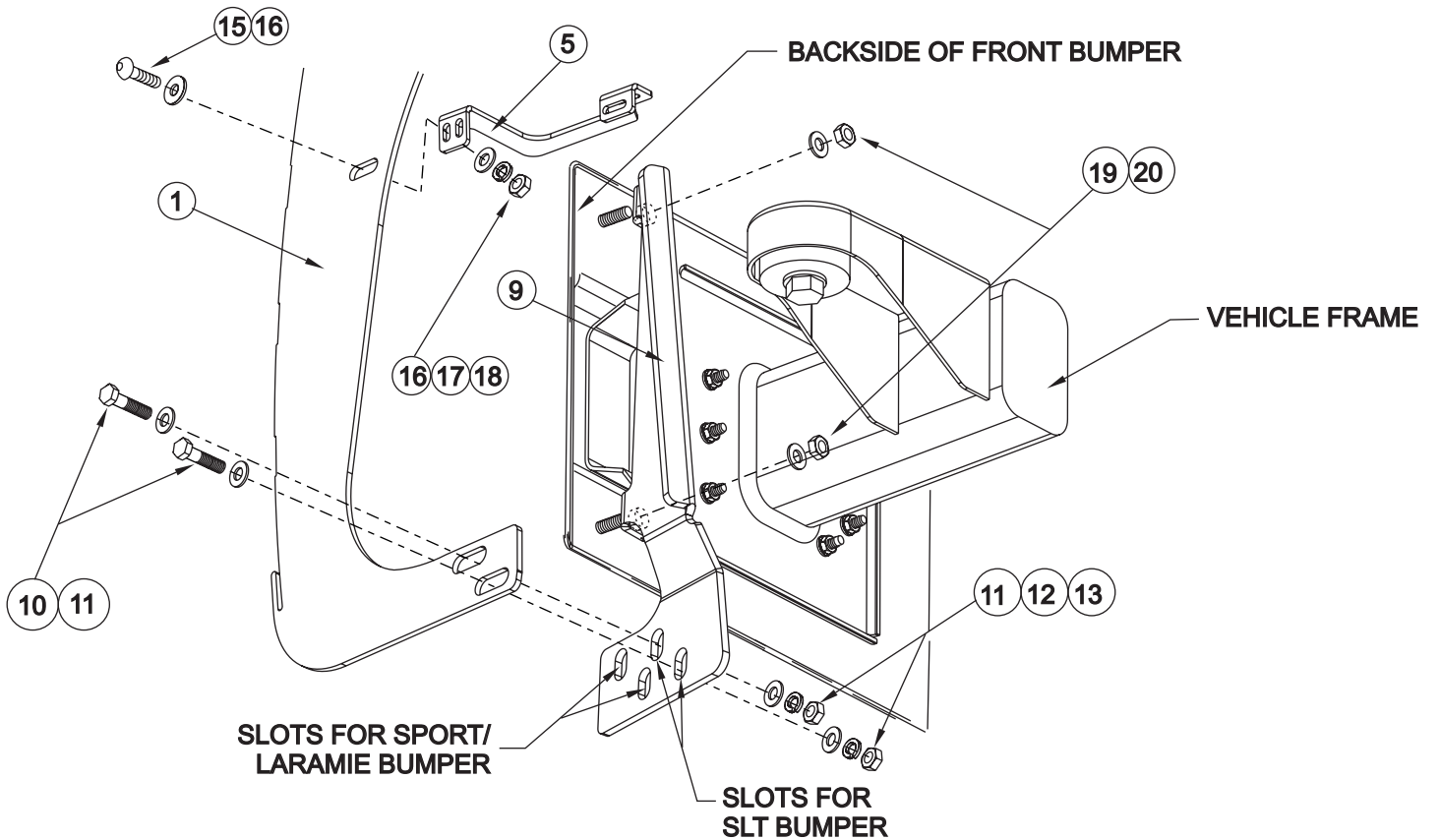
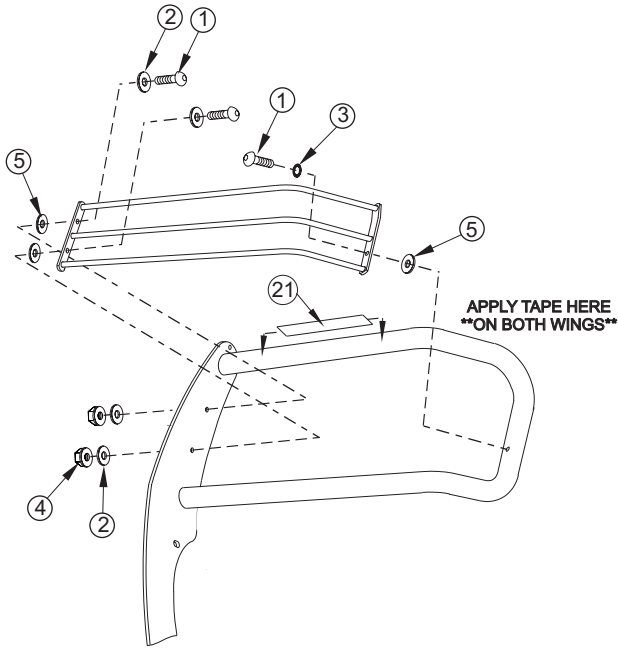
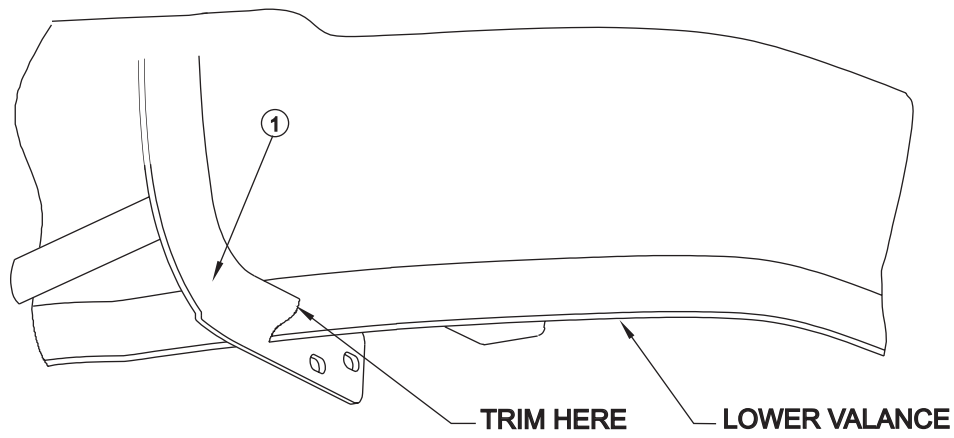
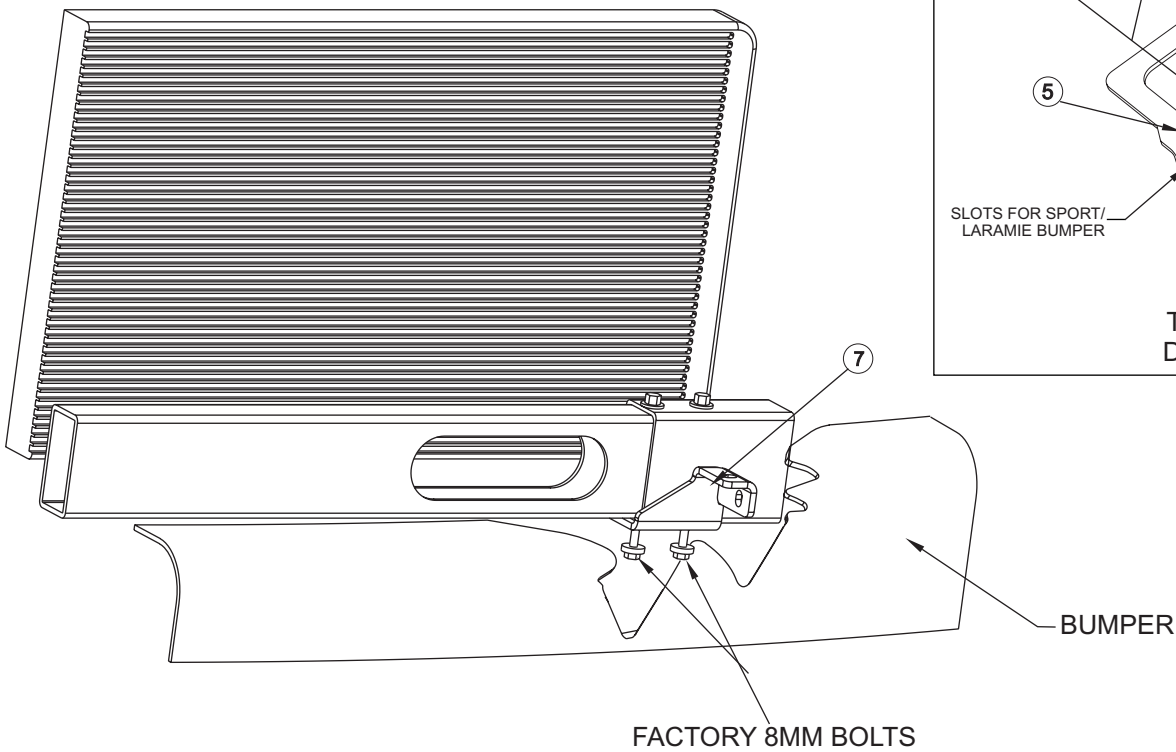


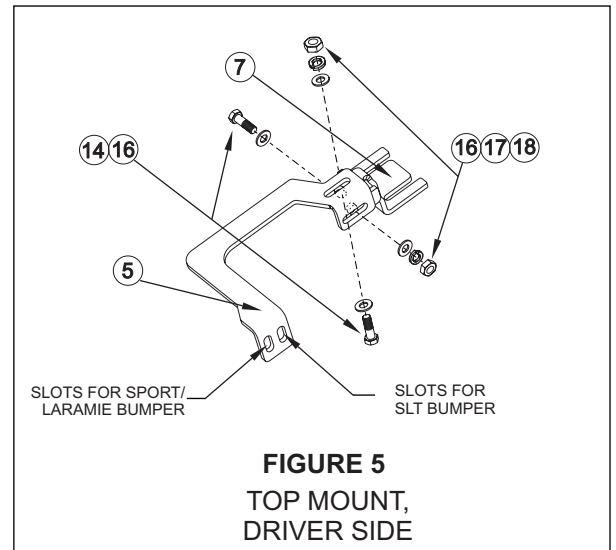
FIGURE 2
DRIVERS SIDE SHOWN
PASSENGER OPPOSITE



**FIGURE 3
DRIVER SIDE**



**FIGURE 4
DRIVERS SIDE SHOWN
PASSENGER OPPOSITE**



**FIGURE 5
TOP MOUNT,
DRIVER SIDE**

Finish protection - Westin products have a high quality finish that must be cared for like any other exposed finish on the vehicle. Protect the finish with a non-abrasive automotive wax (pure carnauba, for example) on a regular basis. The use of cleaner wax or any compound which contains an abrasive is detrimental, as the compounds scratch the finish and open it to corrosion.