

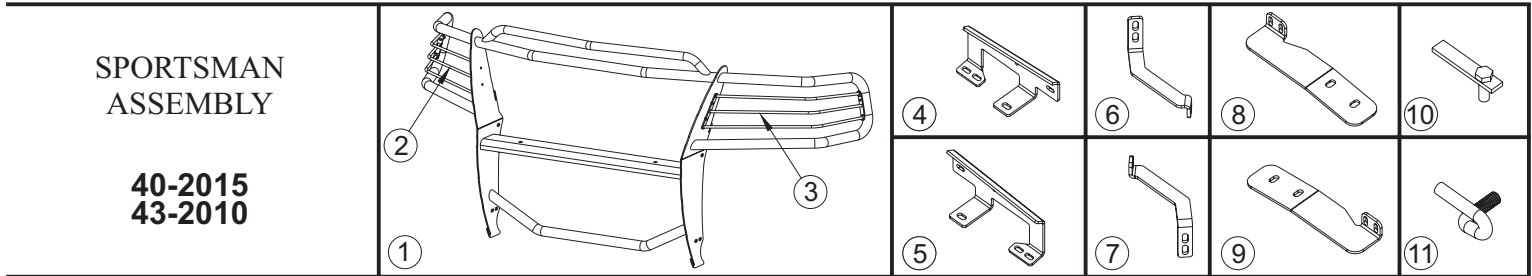


SIGNATURE OF QUALITY

AUTOMOTIVE PRODUCTS, INC.

INSTALLATION INSTRUCTIONS

APPLICATION: 2006-07 FORD F-150 2/4 WHEEL DRIVE



PARTS KIT CONTENTS

ITEM	QTY	DESCRIPTION	ITEM	QTY	DESCRIPTION
1	1	SPORTSMAN ASSEMBLY	20	4	1/2-13 HEX NUT, YELLOW ZINC
2,3	2	LIGHT GUARD ASSEMBLY, PASSENGER(2) & DRIVER(3)	21	6	3/8-16 X 1.25" HEX HEAD BOLT, STAINLESS
4,5	2	BRACKET, PASSENGER(4) & DRIVER(5)	22	12	3/8" FLAT WASHER, STAINLESS
6,7	2	TOP BRACKET, PASSENGER(6) & DRIVER(7)	23	6	3/8" LOCK WASHER, STAINLESS
8,9	2	BOTTOM BRACKET, PASSENGER(8) & DRIVER(9)	27	6	3/8-16 HEX NUT, STAINLESS
10	4	BOLT PLATE	28	4	3/8-16 X 1.00" HEX HEAD BOLT, YELLOW ZINC
11	2	"J" BOLT	29	10	3/8" FLAT WASHER, YELLOW ZINC
12	2	SPACER WASHER	30	6	3/8" LOCK WASHER, YELLOW ZINC
13	2	PLASTIC WASHER	31	6	3/8-16 HEX NUT, YELLOW ZINC
14	2	1/2-13 X 1.50" HEX HEAD BOLT, YELLOW ZINC	32	2	ANTI-REFLECTIVE TAPE (FOR CHROME ASSEMBLIES ONLY.)
15	2	1/2" FLAT WASHER, YELLOW ZINC			NOTE: IF VEHICLE HAS TOW HOOKS, NOT ALL FASTENERS WILL BE USED.
16	2	1/2" LOCK WASHER, YELLOW ZINC			
17	2	1/2-13 HEX NUT, YELLOW ZINC			
18	4	1/2" FLAT WASHER, YELLOW ZINC			
19	4	1/2" LOCK WASHER, YELLOW ZINC			

TOOLS REQUIRED

3/4" SOCKET	9/16" SOCKET	9/16" WRENCH	7/16" WRENCH	5/32" HEX WRENCH
17MM SOCKET	15MM SOCKET	13MM SOCKET	RATCHET	SOCKET EXTENSION
TORQUE WRENCH	UTILITY KNIFE			

- STEP 1. Remove the contents from box and check for damage. Verify all parts are present. Read instructions completely before beginning.
- STEP 2. Attach light guard assemblies as shown. **SEE FIGURE 1.**
VEHICLES WITH TOW HOOKS
- STEP 3. Remove tow hooks by removing front bolt and loosening rear bolt. Slide tow hooks off. Remove rear bolt and make sure nut plate in frame stays aligned with holes.
- STEP 4. Position bottom bracket up to bottom of frame and replace rear tow hook bolt. Slide tow hooks onto rear bolt and reinstall front bolt. Leave loose. **SEE FIGURE 2.** Go to step 6.
VEHICLES WITHOUT TOW HOOKS
- STEP 5. Insert two bolt plates through the end of the frame and into bottom frame holes. **NOTE:** It may be necessary to remove the lower plastic portion of the bumper to gain access to ends of the frame rails. The indented pockets in the lower bumper will need to be cut out with a utility knife to allow bottom brackets to pass through. **SEE FIGURE 3.**
- STEP 6. With hood open, install brackets as shown. Leave loose. **NOTE:** Close hood carefully to insure that there is

WO:

75-0610 REVISION B 5/3/07

proper clearance between bottom of grille and top brackets. If not, the bumper may need to be lowered by loosening all bumper bolts and adjusting as needed. **SEE FIGURE 4.**

- STEP 7. Attach Sportsman uprights to mount brackets using 3/8" stainless steel fasteners. Center and adjust Sportsman as desired. Slowly lower hood to recheck for clearance of Sportsman and top mount brackets. Tighten all fasteners. Recommended torque values are 75 Ft. Lbs. for tow hook bolts, 64 Ft. Lbs. for 1/2" fasteners and 20 Ft.Lbs. for 3/8" stainless steel fasteners.
- STEP 8. For chrome assemblies. If light glare is being experienced off the wings of the Sportsman, anti-reflective tape has been supplied to reduce glare. With headlights on, note where the reflection is concentrated on the wing. Clean the wing well with a non-abrasive cleaner (rubbing alcohol works the best.) Trim the anti-reflective tape

ITEM	QTY.	DESCRIPTION
1	8	1/4-20 X 1.00" BUTTON HEAD BOLT
2	8	1/4" FLAT WASHER
3	4	1/4" INTERNAL TOOTH LOCK WASHER
4	4	1/4-20 NYLON NUT
5	8	RUBBER WASHER

NOTE: ALL FASTENERS MAY NOT BE USED.

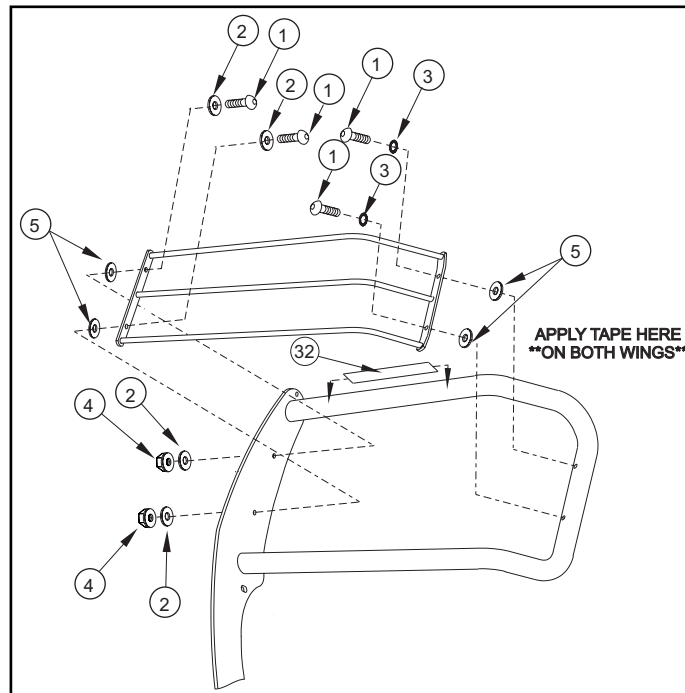


FIGURE 1
LIGHT GUARD INSTALLATION

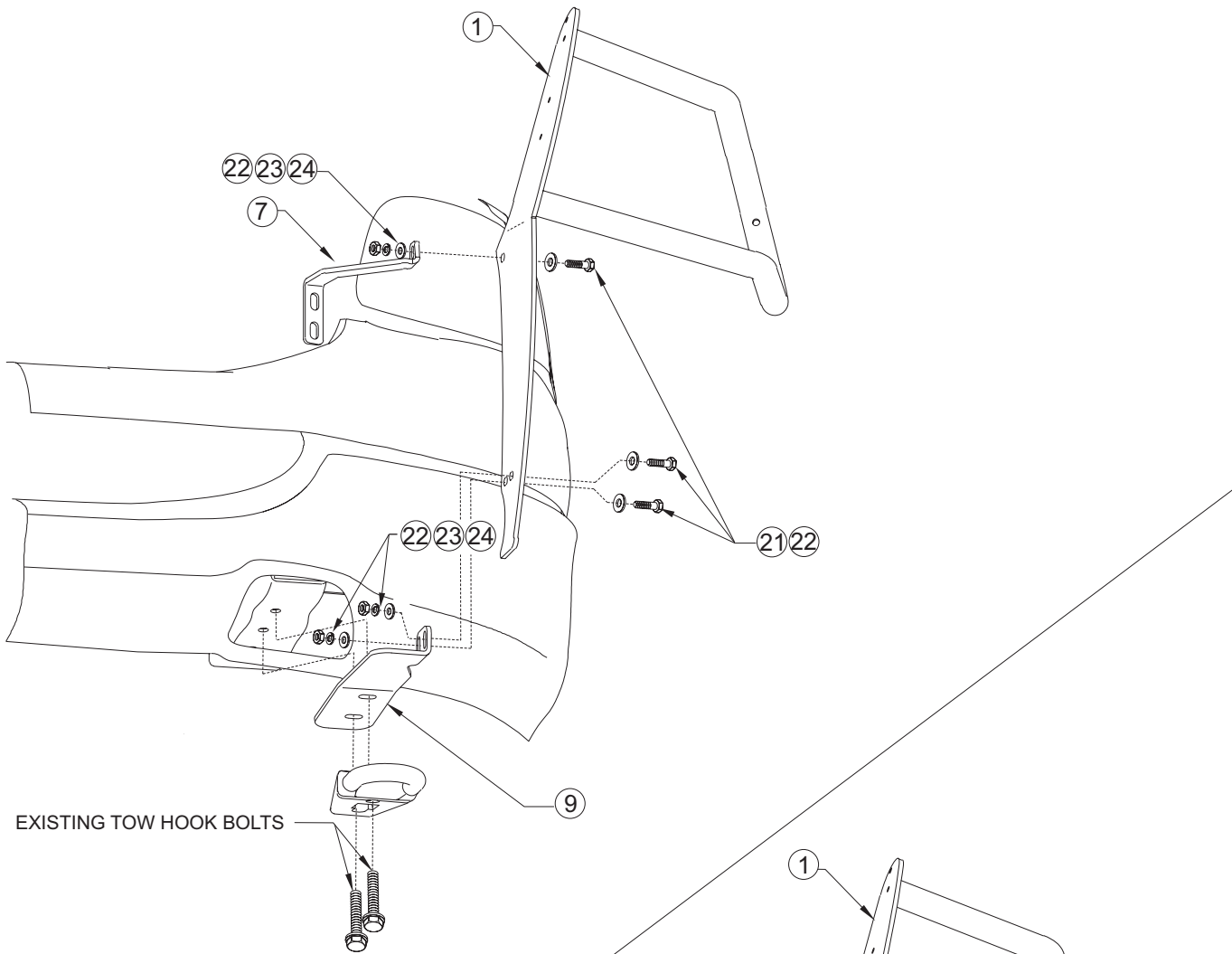


FIGURE 2
 INSTALLATION VIEW OF DRIVER SIDE,
 PASSENGER SIDE OPPOSITE

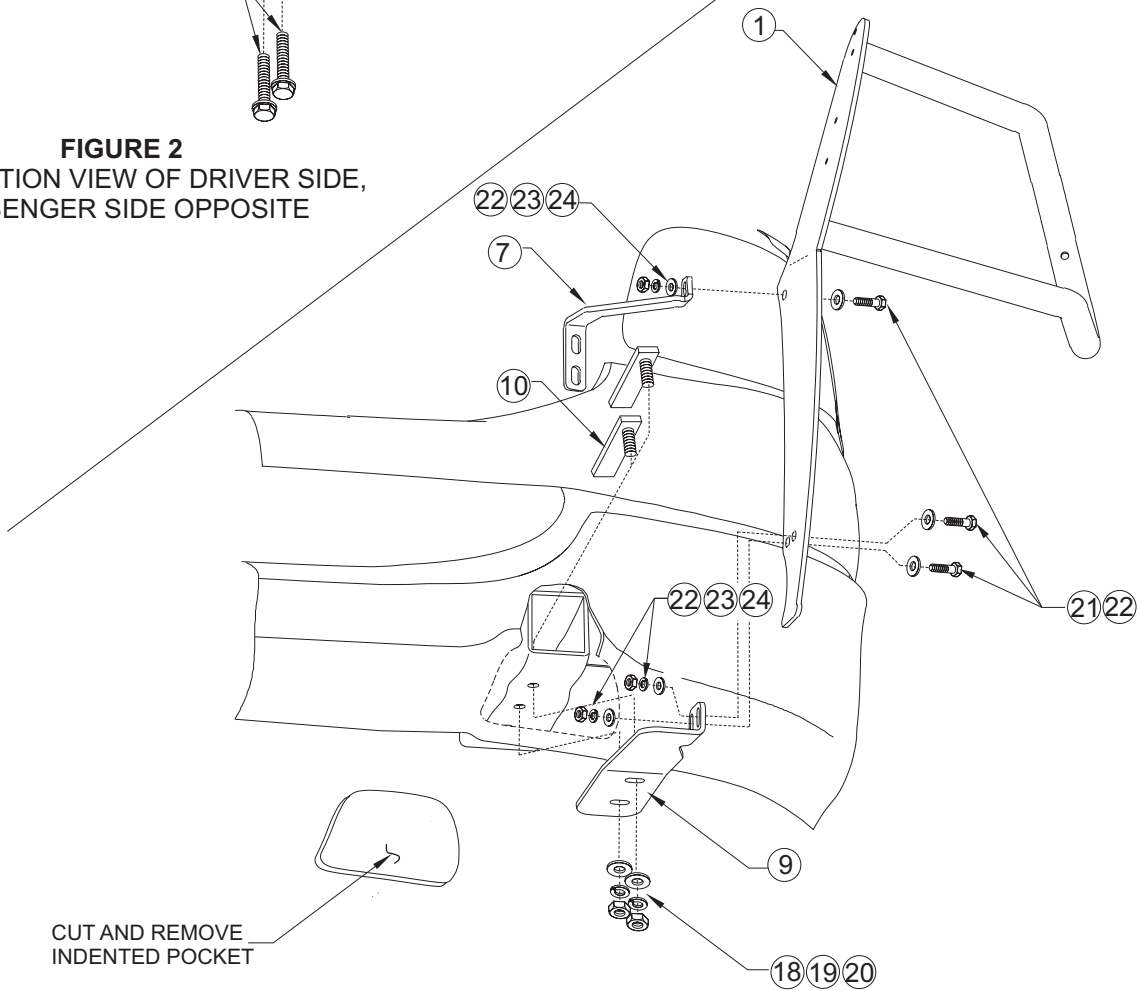


FIGURE 3
 2 WHEEL DRIVE WITHOUT TOW HOOKS

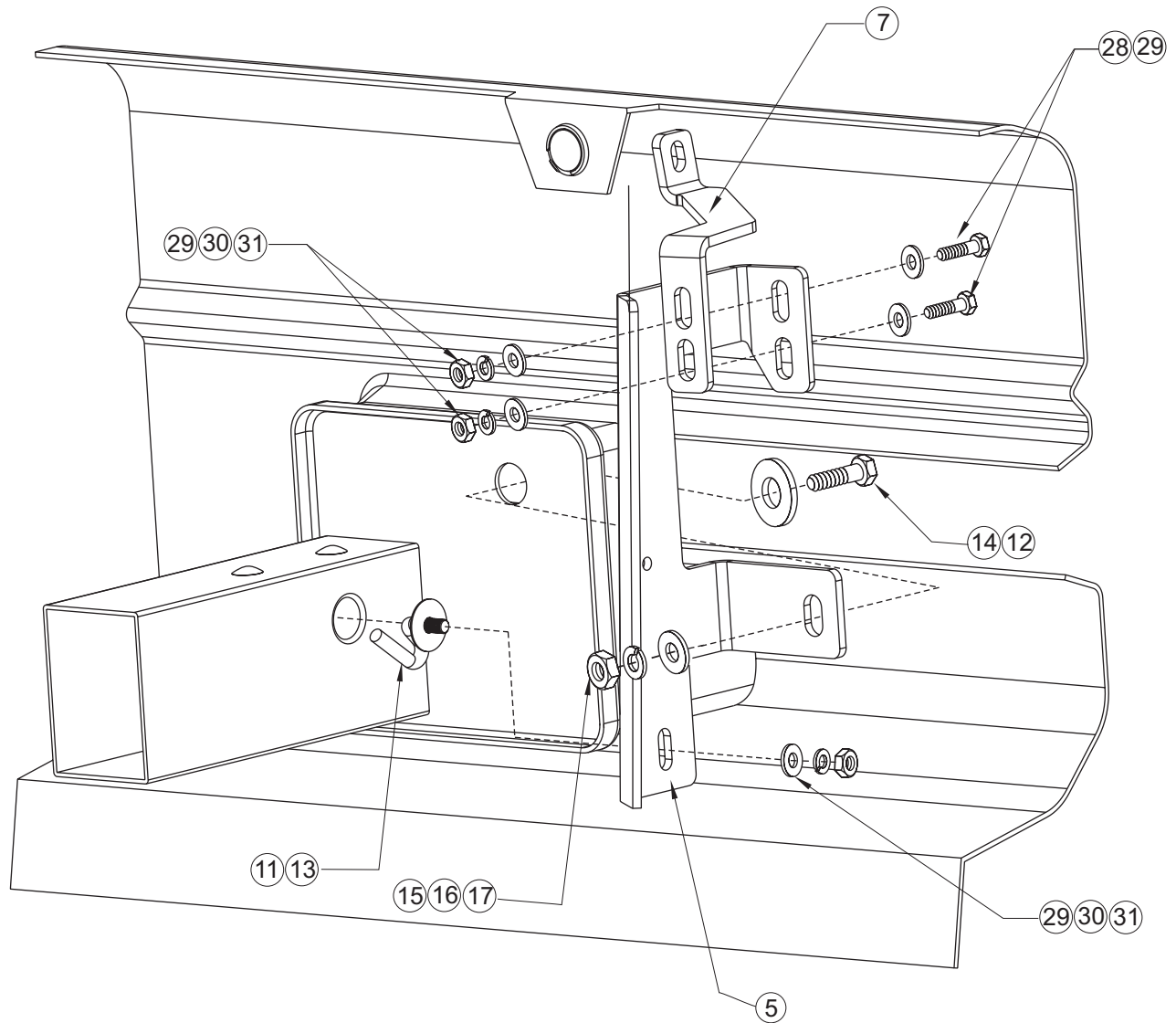


FIGURE 4
 INSTALLATION OF DRIVER SIDE SHOWN
 PASSENGER SIDE OPPOSITE.

Finish protection - Westin products have a high quality finish that must be cared for like any other exposed finish on the vehicle. Protect the finish with a non-abrasive automotive wax (pure carnauba, for example) on a regular basis. The use of cleaner wax or any compound which contains an abrasive is detrimental, as the compounds scratch the finish and open it to corrosion.