



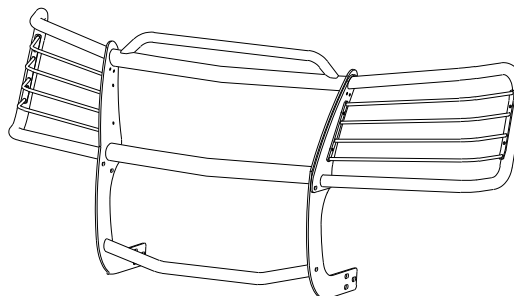
INSTALLATION INSTRUCTIONS

APPLICATION: 2004-UP CHEVROLET COLORADO 2/4WD
2004-UP GMC CANYON 2/4 WD

AUTOMOTIVE PRODUCTS, INC.

SPORTSMAN
ASSEMBLY

41-1515
44-1510



PARTS KIT CONTENTS

ITEM	QTY	DESCRIPTION	ITEM	QTY	DESCRIPTION
1	2	WING ASSEMBLY	20	2	3/8-16 X 1.25" SS BLK. HEX HEAD BOLT
2	1	HOOD BAR/TOP TUBE ASSEMBLY	21	2	3/8-16 X 1.00" SS HEX HEAD BOLT
3	1	CENTER TUBE	22	10	3/8-16 X 1.00" SS BUTTON HEAD BOLT
4	1	BOTTOM TUBE	23	12	3/8" FLAT WASHER
5	2	UPRIGHT	24	16	3/8" SS FLAT WASHER
6	2	LIGHT MOUNT	25	6	3/8" SS BLK. FLAT WASHER
7	2	TOP BRACKET, PASSENGER AND DRIVER	26	6	3/8" LOCK WASHER
8	2	BOTTOM BRACKET, PASSENGER AND DRIVER	27	4	3/8" SS BLK LOCK WASHER
9	2	SUPPORT BRACE, PASSENGER AND DRIVER	28	2	3/8" SS INTERNAL TOOTH LOCK WASHER
10	4	1/2-13 X 4.00" HEX HEAD BOLT	29	6	3/8-16 HEX NUT
11	4	1/2-13 X 1.50" SS FLAT HEAD BOLT	30	2	3/8-16 SS BLK. HEX NUT
12	6	1/2-13 X 1.25" BLK. HEX HEAD BOLT	31	2	3/8-16 BRIDGE WELD NUT
13	12	1/2" BLK. FLAT WASHER	32	8	3/8-16 SS LOCK NUT
14	8	1/2" FLAT WASHER	33	2	SPACER WASHER
15	6	1/2" BLK. LOCK WASHER	34	4	2 3/4" PLASTIC WASHER
16	4	1/2-13 HEX NUT	35	4	1 5/8" PLASTIC WASHER
17	6	1/2-13 BLK. HEX NUT	36	8	1.00" PLASTIC WASHER
18	4	1/2" LOCK WASHER			NOTE: SOME FASTENERS MAY NOT BE USED.
19	6	3/8-16 X 1.25" HEX HEAD BOLT			

TOOLS REQUIRED

3/4" SOCKET
5/16" HEX WRENCH
SOCKET EXTENSION

3/4" WRENCH
7/32" HEX WRENCH
TORQUE WRENCH

9/16" SOCKET
FLAT SCREWDRIVER
13mm SOCKET

9/16" WRENCH
RATCHET

- STEP 1. Remove the contents from box and check for damage. Verify all parts are present. Read instructions completely before beginning.
- STEP 2. Remove lower valance by removing two pushpins from each side of the lower bumper. using a flat tip screwdriver, pry the tabs out from the valance and remove. **NOTE:** If the lower valance is to be reinstalled it will need to be trimmed to fit around the brackets. Using a 13mm socket remove the plastic splash shield directly below the radiator. 2 wheel drive 4 cylinder models will have 2 bolts, 4 wheel drive 5 cylinder models will have 4 bolts. The splash shield will be reinstalled once the top braces are secured.
- STEP 3. Determine passenger and driver bottom brackets. Position passenger bracket to the inside of the frame rail and secure using 1/2" fasteners as shown. **NOTE:** 1/2-13 x 4.00" hex head bolt and spacer washer goes to the outside of the frame. Leave loose and repeat for driver's side. **SEE FIGURE 1.**

- STEP 4. Determine passenger and driver support braces. From the front of the vehicle, install the front half of the support brace through the opening between the grille and bumper. From underneath the vehicle, attach the rear half of the support brace to the front half of the top bracket and secure using 3/8" fasteners. Locate the 1" hole just below where the top of bumper fastens to the frame. Insert the 3/8" bridge nut and bolt into the hole and secure with the plastic washer. Attach the top bracket to the frame by placing it over the 3/8" bolt and securing with 3/8" fasteners as shown. **SEE FIGURE 1**
- STEP 5. Determine passenger and driver uprights, hood-bar top-tube assy., center and bottom tubes. **NOTE:** Uprights are positioned so raised side of bolt holes are facing each other. **SEE FIGURE 2.**
- STEP 6. Attach uprights to top, center and bottom tubes as shown. Level tubes and torque 1/2" fasteners to 60 FT.LBS. and 3/8" fasteners to 30 FT.LBS. **SEE FIGURES 3. NOTE:** If needed, Loctite® or similar thread locking product may be applied to center tube fasteners to help prevent them from loosening.
- STEP 7. Attach light mounts to center tube as shown. Torque to 20 FT.LBS. **SEE FIGURE 3.**
- STEP 8. Attach wing assemblies to uprights as shown in **FIGURE 3.** Torque to 35 FT.LBS.
- STEP 9. If lower valance is to be installed, reinstall it now. Mark the valance at the outside of both of the bottom brackets. Cut a 1/2" slot from the bottom of the valance up to where it meets the bumper. Position the Sportsman up to the vehicle and secure to bottom brackets using 1/2" fasteners. Secure support braces to uprights using 3/8" fasteners as shown. **SEE FIGURE 2**
- STEP 10. Center and Adjust Sportsman as desired. Torque 1/2" fasteners to 65 FT.LBS. and 3/8" fasteners to 30 FT.LBS.

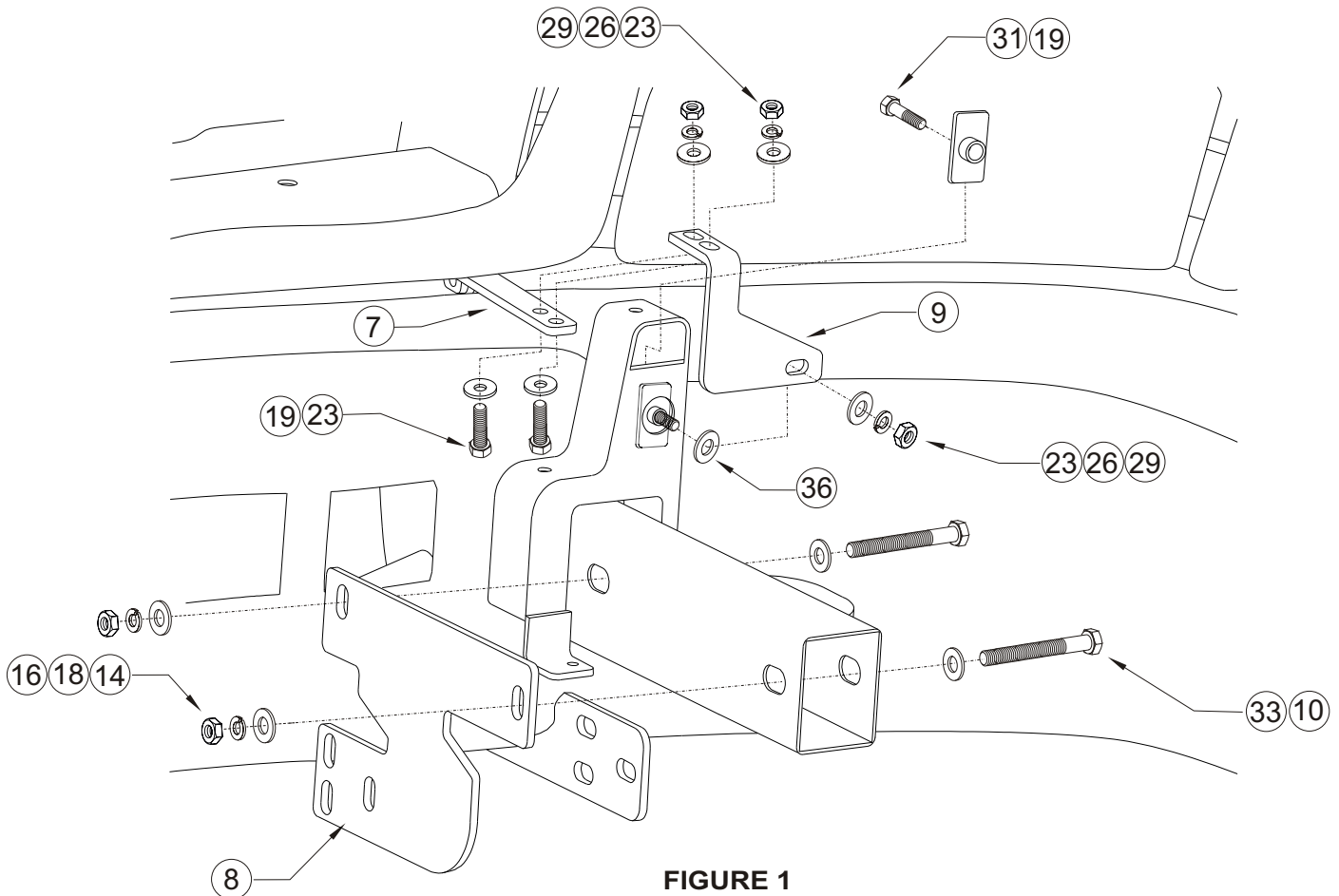


FIGURE 1
DETAIL VIEW OF ASSEMBLY ON
PASSENGER SIDE FROM INSIDE,
DRIVER SIDE IS OPPOSITE

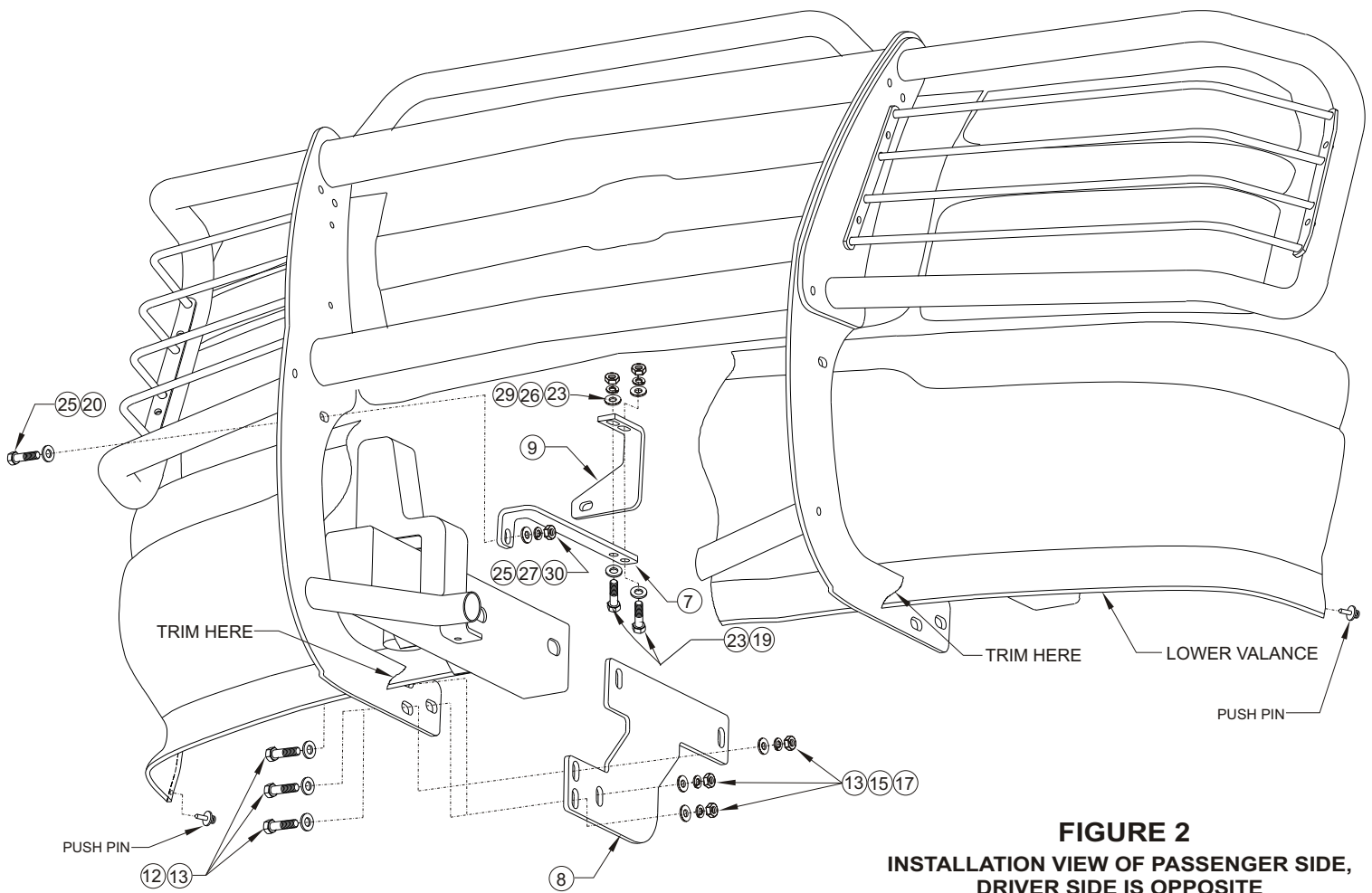


FIGURE 2
INSTALLATION VIEW OF PASSENGER SIDE,
DRIVER SIDE IS OPPOSITE

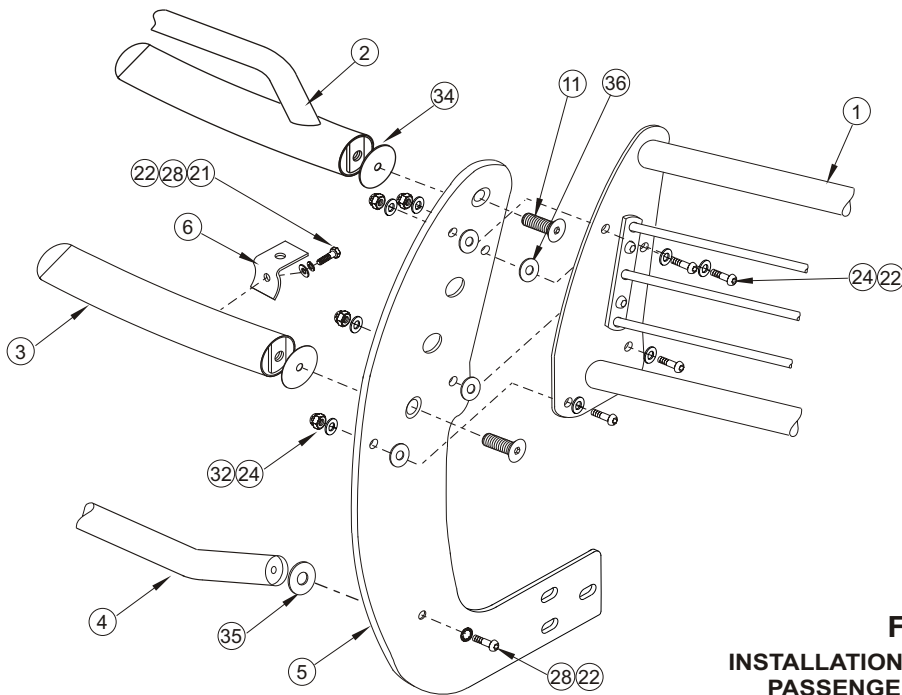


FIGURE 3
INSTALLATION VIEW OF DRIVER SIDE,
PASSENGER SIDE IS OPPOSITE

Finish protection - Westin products have a high quality finish that must be cared for like any other exposed finish on the vehicle. Protect the finish with a non-abrasive automotive wax (pure carnauba, for example) on a regular basis. The use of cleaner wax or any compound which contains an abrasive is detrimental, as the compounds scratch the finish and open it to corrosion.



Westin Automotive Products, Inc.
 5200 N. Irwindale Ave. Suite 220
 Irwindale, Ca. 91706

Thank You for choosing Westin products
 For additional installation assistance please call
 Customer service (800) 793-7846 or (507) 375-3559