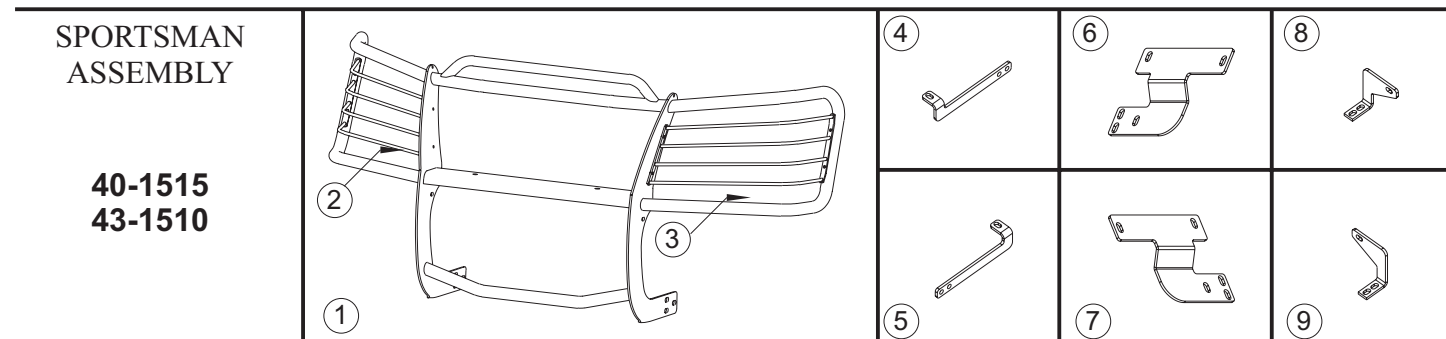




# INSTALLATION INSTRUCTIONS

APPLICATION: 2004-UP CHEVROLET COLORADO 2/4 WD  
2004-UP GMC CANYON 2/4 WD

## AUTOMOTIVE PRODUCTS, INC.



### PARTS KIT CONTENTS

ITEM	QTY	DESCRIPTION	ITEM	QTY	DESCRIPTION
1	1	SPORTSMAN ASSEMBLY	18	6	3/8-16 X 1.25" HEX HEAD BOLT
2,3	2	LIGHT GUARD ASSEMBLY, PASSENGER (2) AND DRIVER (3)	19	10	3/8" FLAT WASHER
4,5	2	TOP BRACKET, PASSENGER (4) AND DRIVER (5)	20	6	3/8" LOCK WASHER
6,7	2	BOTTOM BRACKET, PASSENGER (6) AND DRIVER (7)	21	6	3/8-16 HEX NUT
8,9	2	SUPPORT BRACE, PASSENGER (8) AND DRIVER (9)	22	2	3/8-16 X 1.25" SS BLK. HEX HEAD BOLT
10	4	1/2-13 X 4.00" HEX HEAD BOLT	23	4	3/8" SS BLK. FLAT WASHER
11	8	1/2" FLAT WASHER	24	2	3/8" SS BLK. LOCK WASHER
12	4	1/2" LOCK WASHER	25	2	3/8-16 SS BLK. HEX NUT
13	4	1/2-13 HEX NUT	26	2	3/8-16 BRIDGE WELD NUT
14	6	1/2-13 X 1.25" BLK. HEX HEAD BOLT	27	4	SPACER WASHER
15	12	1/2" BLK. FLAT WASHER	28	2	PLASTIC WASHER
16	6	1/2" BLK. LOCK WASHER	29	2	15" REFLECTIVE TAPE
17	6	1/2-13 BLK. HEX NUT			(FOR CHROME ASSEMBLIES ONLY)
					<b>NOTE:</b> SOME FASTENERS MAY NOT BE USED.

### TOOLS REQUIRED

3/4" SOCKET	3/4" WRENCH	9/16" SOCKET	9/16" WRENCH	7/16" WRENCH
5/32" HEX WRENCH	13MM SOCKET	FLAT SCREWDRIVER	RATCHET	TORQUE WRENCH

- STEP 1. Remove the contents from box and check for damage. Verify all parts are present. Read instructions completely before beginning.
- STEP 2. Attach light guard assemblies as shown. **SEE FIGURE 1.**
- STEP 3. Remove lower valance by removing two pushpins from each side of the lower bumper. Using a flat top screwdriver, pry the tabs out from the valance and remove. **NOTE:** If the lower valance is to be reinstalled it will need to be trimmed to fit around the brackets. Using a 13mm socket remove the plastic splash shield directly below the radiator. 2 wheel drive 4 cylinder models will have 2 bolts. 4 wheel drive 5 cylinder models will have 4 bolts. The splash shield will be reinstalled once the top braces are secured.
- STEP 4. Determine passenger and driver bottom brackets. Position passenger bracket to the inside of the frame rail and secure using 1/2" fasteners as shown. **NOTE:** 1/2-13 x 4.00" hex head bolt and spacer washer goes to the

outside of the frame. Leave loose and repeat for driver's side. **SEE FIGURE 3.**

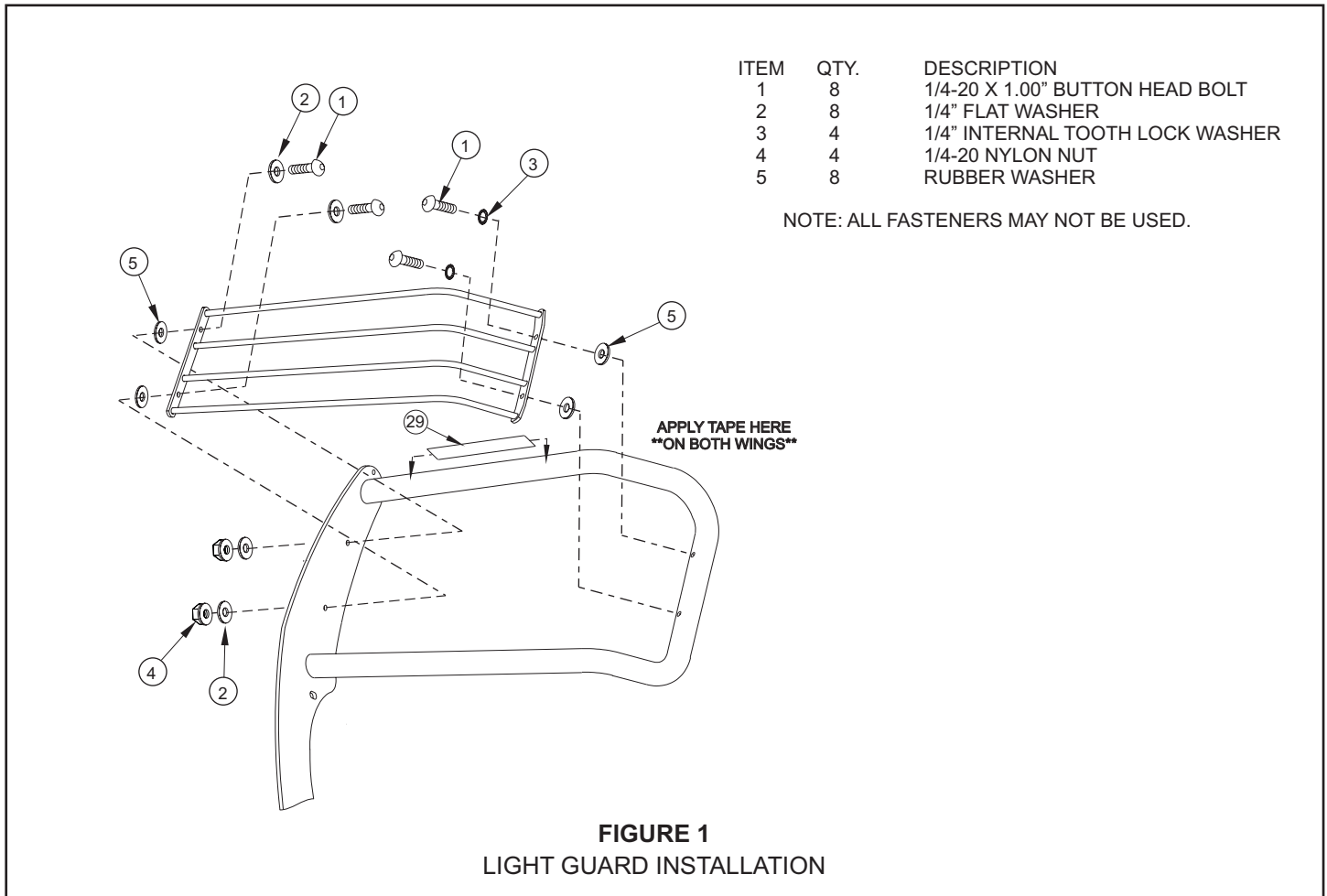
STEP 5. Determine passenger and driver support braces. From the front of the vehicle, install the top bracket through the opening between the grille and bumper. From underneath the vehicle, attach the support brace to the top bracket and secure using 3/8" fasteners. Locate the 1" hole just below where the top of bumper fastens to the frame. Insert the 3/8" bridge nut and bolt into the hole and secure with the plastic washer. Attach the top bracket to the frame by placing it over the 3/8" bolt and securing with 3/8" fasteners as shown. **SEE FIGURE 3.**

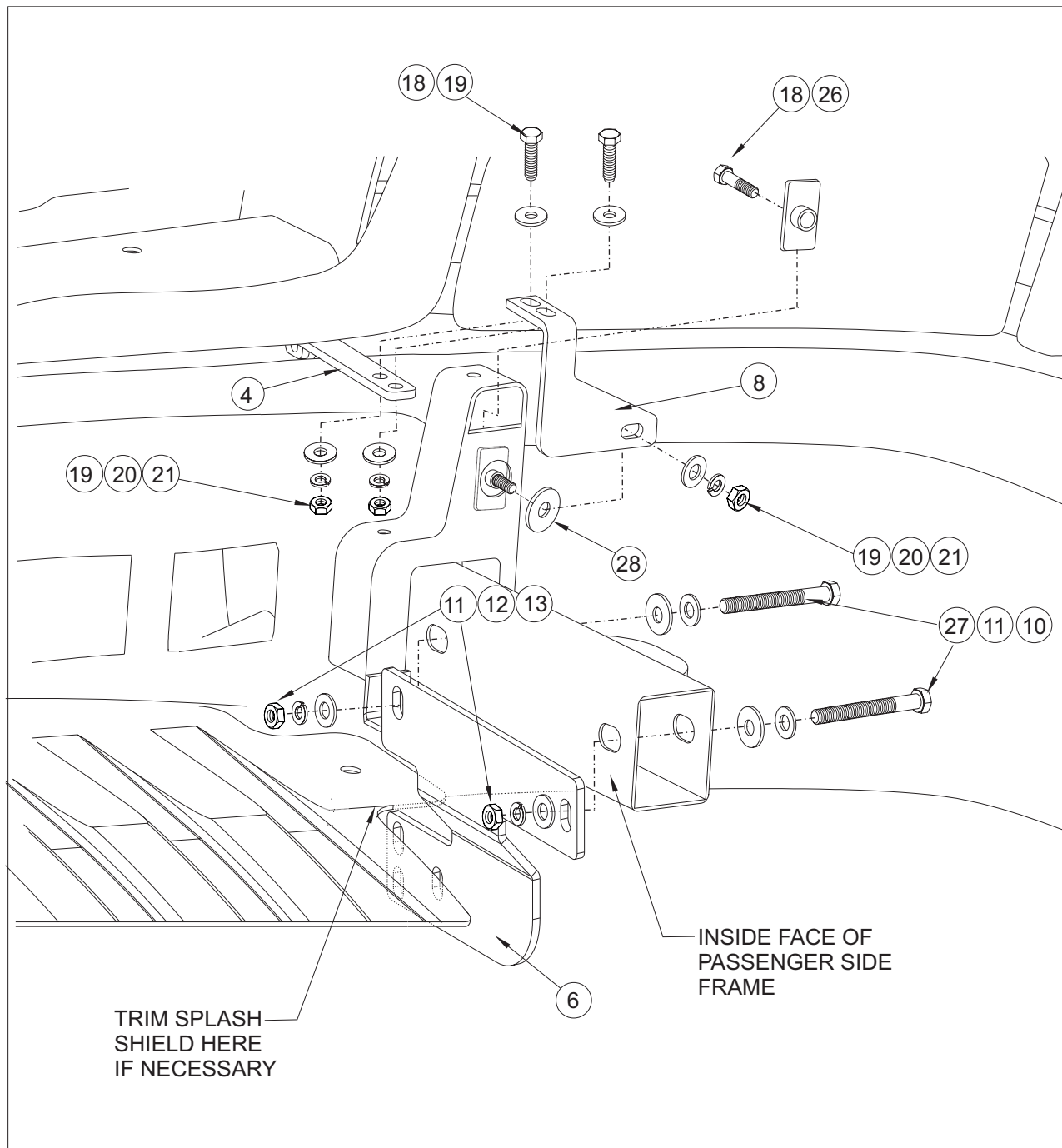
STEP 6. If lower valance and splash shield are to be installed, reinstall them now. Mark the valance on the inside of where it comes into contact with the bottom brackets. Cut two slots that extend from this mark to 1/2" to the outside of the vehicle and a 1/2" up towards the bumper. **SEE FIGURE 3.**

STEP 7. Place cardboard under vehicle. Lay Sportsman on the cardboard with front side down. Align rearmost slots on uprights with rearmost slots on bottom brackets and secure together using 1/2" fasteners. Leave loose. Rotate Sportsman up towards vehicle until remaining 1/2" slots align and the 3/8" slots align with the top brackets. Be careful not to scratch the uprights with the top brackets. Fasten together using remaining 1/2" and 3/8" fasteners. More trimming of lower valance may be necessary to align Sportsman assembly properly.

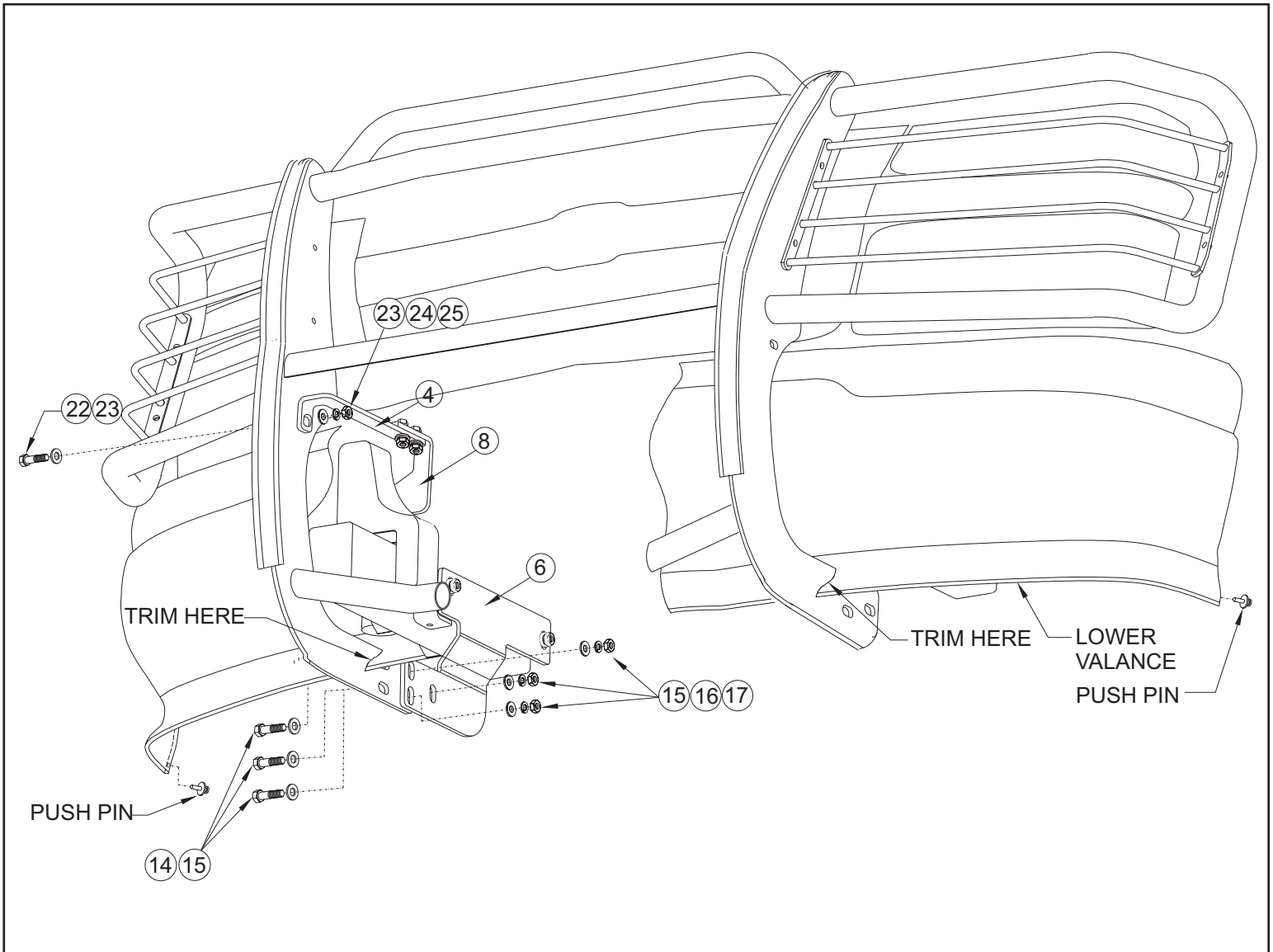
STEP 8. Center and adjust Sportsman as desired. Torque 1/2" fasteners to 65 FT.LBS. and 3/8" fasteners to 30 FT.LBS.

STEP 9. For chrome assemblies only. If light glare is being experienced off the wings of the grille guard, anti reflective tape has been supplied to reduce glare. With headlights on, note where the reflection is concentrated on the wing. Clean the wing well with a non-abrasive cleaner (rubbing alcohol works the best.) Trim the anti-reflective tape to the appropriate size where the glare was located and apply tape. **SEE FIGURE 1.**





**FIGURE 2**  
 INSTALLATION VIEW OF PASSENGER SIDE,  
 DRIVER SIDE IS OPPOSITE



**FIGURE 3**  
 INSTALLATION VIEW OF PASSENGER SIDE,  
 DRIVER SIDE IS OPPOSITE

Finish protection - Westin products have a high quality finish that must be cared for like any other exposed finish on the vehicle. Protect the finish with a non-abrasive automotive wax (pure carnauba, for example) on a regular basis. The use of cleaner wax or any compound which contains an abrasive is detrimental, as the compounds scratch the finish and open it to corrosion.



Westin Automotive Products, Inc.  
 5200 N. Irwindale Ave. Suite 220  
 Irwindale, Ca. 91706

Thank You for choosing Westin products  
 For additional installation assistance please call  
 Customer service (800) 793-7846 or (507) 375-3559