



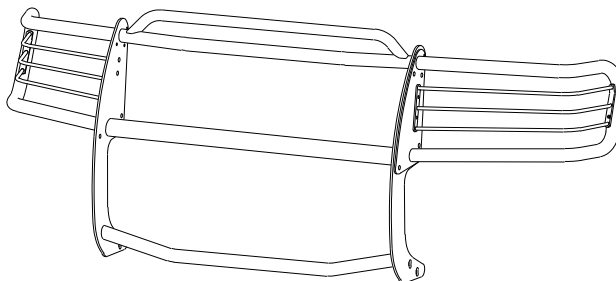
# INSTALLATION INSTRUCTIONS

APPLICATION: 2004-UP DODGE DURANGO 2/4 WHEEL DRIVE

## AUTOMOTIVE PRODUCTS, INC.

SPORTSMAN  
ASSEMBLY

41-1545  
44-1540



### PARTS KIT CONTENTS

ITEM	QTY	DESCRIPTION	ITEM	QTY	DESCRIPTION
1	2	WING ASSEMBLY	19	4	3/8-16 X 1.25" SS HEX HEAD BOLT
2	1	HOOD BAR/TOP TUBE ASSEMBLY	20	2	3/8-16 X 1.25" SS BUTTON HEAD BOLT
3	1	CENTER TUBE	21	10	3/8-16 X 1.00" SS BUTTON HEAD BOLT
4	1	BOTTOM TUBE	22	2	3/8-16 X 1.00" SS BLK HEX HEAD BOLT
5	2	UPRIGHT	23	2	3/8" SS BLK. FLAT WASHER
6	2	LIGHT MOUNT	24	24	3/8" SS FLAT WASHER
7	2	TOP BRACKET, PASSENGER AND DRIVER	25	4	3/8" SS LOCK WASHER
8	2	BOTTOM BRACKET, PASSENGER AND DRIVER	26	2	3/8" SS BLK LOCK WASHER
9	2	SUPPORT BRACE, PASSENGER AND DRIVER	27	2	3/8" SS INTERNAL TOOTH LOCK WASHER
10	4	1/2-13 X 1.50" SS FLAT HEAD BOLT	28	4	3/8-16 SS HEX NUT
11	6	1/2-13 X 1.25" SS BLK HEX HEAD BOLT	29	8	3/8-16 SS LOCK NUT
12	2	1/2-13 X 1.25" HEX HEAD BOLT	30	4	2 3/4" PLASTIC WASHER
13	12	1/2" SS BLK FLAT WASHER	31	2	1 5/8" PLASTIC WASHER
14	6	1/2" FLAT WASHER	32	8	1.00" PLASTIC WASHER
15	6	1/2" SS BLK LOCK WASHER			
16	6	1/2" SS BLK HEX NUT			
17	4	1/2" LOCK WASHER			
18	4	1/2-13" HEX NUT			

NOTE: SOME FASTENERS MAY NOT BE USED.

### TOOLS REQUIRED

3/4" SOCKET  
18MM SOCKET  
SOCKET EXTENSION

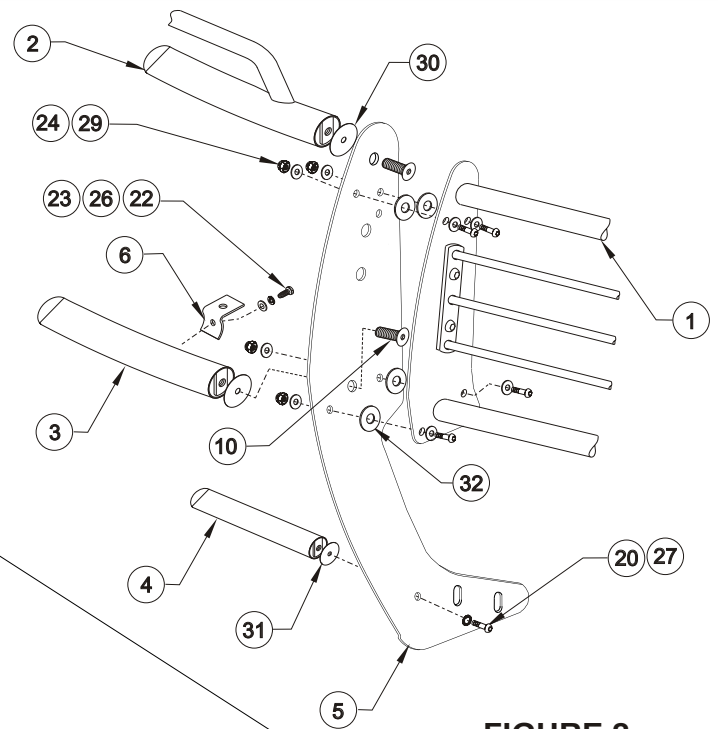
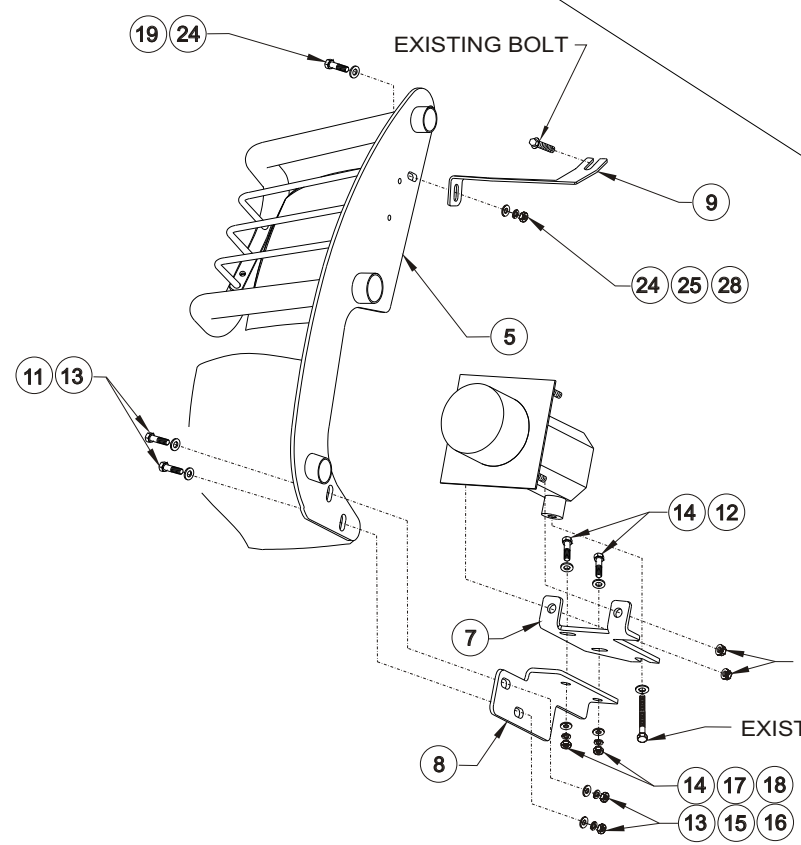
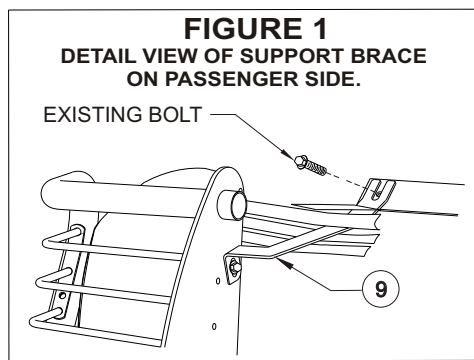
3/4" WRENCH  
18MM WRENCH  
TORQUE WRENCH

9/16" SOCKET  
13MM SOCKET

9/16" WRENCH  
RATCHET

- STEP 1. Remove the contents from box and check for damage. Verify all parts are present. Read instructions completely before beginning.
- STEP 2. Open hood and **support without using the hood support rod**. Remove upper radiator shroud by removing 12 plastic push type retainers. Save these retainers for reinstallation. Attach support brace as shown. **SEE FIGURE 1 AND 3**. Leave loose.
- STEP 3. From underneath vehicle, remove 4 lower bumper frame bolts and 2 body mount bolts and attach top brackets as shown. **SEE FIGURE 3**. Torque all bolts to 65 FT.LBS.
- STEP 4. Attach bottom brackets using 1/2" fasteners as shown. **SEE FIGURE 3**. Leave loose.
- STEP 5. Determine passenger and driver uprights, hood bar/top tube assembly, center and bottom tubes. **NOTE:** Uprights are positioned so raised side of bolt holes are facing each other. **SEE FIGURE 2**.

- STEP 6. Attach uprights to hood bar/top tube assembly, center and bottom tubes as shown. Level and torque 1/2" fasteners to 60 FT. LBS. and 3/8" fasteners to 30 FT. LBS. **NOTE:** If needed, Loctite® or similar thread locking product may be applied to center tube fasteners to help prevent them from loosening.
- STEP 7. Attach light mounts to center tube as shown. **SEE FIGURE 2.**
- STEP 8. Place cardboard in front of vehicle. Align rearmost slot on uprights with rearmost slot in bottom brackets and secure with 1/2" fasteners. Rotate Sportsman up towards vehicle and attach as shown to both lower bracket and support braces. Center and level Sportsman. Torque 3/8" and 10mm support brace fasteners to 35 FT.LBS. and 1/2" fasteners to 65 FT.LBS.
- STEP 9. Attach wing assemblies to uprights as shown in **FIGURE 2.** Torque to 35 FT.LBS.
- STEP 10. Replace upper radiator shroud and close hood.



**FIGURE 2**  
ASSEMBLY VIEW OF DRIVER SIDE,  
PASSENGER SIDE OPPOSITE.

**FIGURE 3**  
INSTALLATION VIEW OF PASSENGER SIDE,  
DRIVER SIDE OPPOSITE.

Finish protection - Westin products have a high quality finish that must be cared for like any other exposed finish on the vehicle. Protect the finish with a non-abrasive automotive wax (pure carnauba, for example) on a regular basis. The use of cleaner wax or any compound which contains an abrasive is detrimental, as the compounds scratch the finish and open it to corrosion.



Westin Automotive Products, Inc.  
5200 N. Irwindale Ave. Suite 220  
Irwindale, Ca. 91706

Thank You for choosing Westin products  
For additional installation assistance please call  
Customer service (800) 793-7846 or (507) 375-3559