



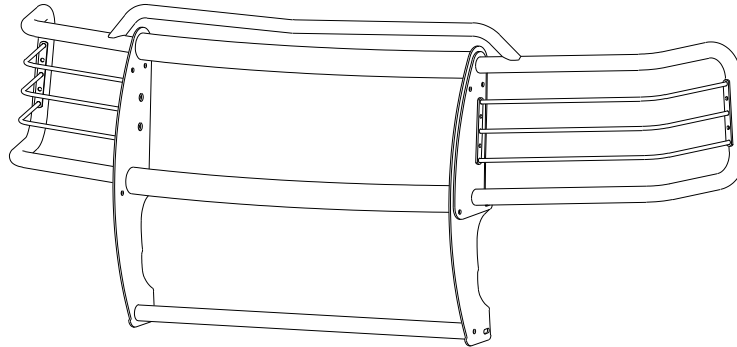
INSTALLATION INSTRUCTIONS

APPLICATION: 2003 AND UP GMC SIERRA 1500/2500 LD,
1500/2500/3500 HD, 2/4 WHEEL DRIVE

AUTOMOTIVE PRODUCTS, INC.

SPORTSMAN
ASSEMBLY

44-1220
44-1260
41-1225
41-1265



QTY	PARTS KIT CONTENTS DESCRIPTION	TOOLS REQUIRED
1	SPORTSMAN ASSEMBLY WITH LIGHT GUARDS	9/16" SOCKET
2	TOP BRACKET	3/4" SOCKET
2	BOTTOM BRACKET	19MM SOCKET
4	3/8 -16 X 1.25" LG. HEX HEAD BOLT	18MM SOCKET
8	3/8" FLAT WASHER, ZINC PLATED	10MM SOCKET
4	3/8" LOCK WASHER, ZINC PLATED	15MM SOCKET
4	3/8 -16 HEX NUT, ZINC PLATED	RATCHET
2	BOLT PLATE	TORQUE WRENCH
4	1/2" FLAT WASHER	PHILLIPS SCREWDRIVER
4	1/2" LOCK WASHERS	SMALL FLAT SCREWDRIVER
2	1/2 -13 HEX NUT	9/16" WRENCH
4	1/2-13 X 1.50" SOCKET HEAD, FLAT HEAD BOLT	SOCKET EXTENSION
4	2.75" OD PLASTIC WASHER	
16	3/8" FLAT WASHER	
8	3/8-16 NYLON INSERT LOCK NUT	
10	3/8-16 X 1.00" BUTTON HEAD CAP SCREW	
2	3/8" INTERNAL TOOTH LOCK WASHER	
2	1.625" OD PLASTIC WASHER	
8	1.00" OD PLASTIC WASHER	

- STEP 1. Remove the contents from the box and check for any damage. Verify all parts against the parts list.
- STEP 2. Read and understand instructions completely before beginning installation.
- STEP 3. Determine passenger and driver side uprights, hood bar, top tube, center tube and bottom tube. Uprights are positioned so raised sides of bolt holes are facing each other.
- STEP 4. Fasten uprights to top, center and bottom tubes using (4) 1/2-13 x 1.50" stainless steel flat head bolts, (4) 2 3/4" OD plastic washers, (2) 3/8-16 x 1.00" stainless steel button head cap bolts, (2) 3/8" stainless steel internal tooth lock washers and (2) 1 5/8" OD plastic washers. Level tubes and torque: 1/2" fasteners to 60 FT. LBS. And 3/8" fasteners to 30 FT. LBS.
- STEP 5. Remove plastic shroud above grille by removing the seven push pin retainers. Pull center of pin up with small flat screwdriver. See Figure 2.
- STEP 6. Remove grille from truck by removing 6mm bolt from top of grille. Then pull on outer edge of grille by applying firm pressure away from the fender, repeat on the opposite side and center section. Carefully remove grille from vehicle. See Figure 2.
- STEP 7. To install top brackets, remove both 12mm factory bumper bolts from top of frame (located behind the top

side of bumper), then replace with top mount brackets, (2) 1/2" lock washer and existing 12mm bolts previously removed. See Figures 3 and 4.

- STEP 8. To install bottom brackets on 1500 models, remove 12mm bolts from bottom side of frame (4X4 only). Position bottom bracket as shown and reinstall 12mm bolts (2)1/2" flat washer, (2)1/2" lock washer finger tight, for 2WD use the bolt plates (2)1/2" flat washers, (2)1/2" lock washers, (2)1/2" hex nuts provided. To install bottom brackets on 1500HD, 2500, 2500HD and 3500HD remove the outer 12mm tow hook bolts. Insert the bolt plate into the frame from the front of the vehicle. Attach brackets using (2) 1/2" flat washers, (2) 1/2" lock washers and (2) 1/2" hex nuts to bolt plate and use existing 12mm bolts, (2) 1/2" lock washers and (2) 1/2" lock washers. See Figures 3 and 4.
- STEP 9. Raise the Sportsman up to the brackets and attach using 3/8" hardware and hand tighten. Adjust Sportsman to center of truck and torque all fasteners at the frame locations only to: 1/2" fasteners = 65 FT. LBS; 12mm fasteners = 60 FT. LBS.
- STEP 10. Remove Sportsman from brackets and re-install vehicle grille and plastic shroud in the opposite order of removal.
- STEP 11. Re-attach Sportsman to brackets and tighten the 3/8" bolts to 30 FT. LBS
- STEP 12. Install hood bar gasket and grommet on each wing assembly. Place gasket over the small tube and slide grommet until flush with gasket. See Figure 1.
- STEP 13. Determine passenger and driver side wing assembly. See figure 1. Install driver side wing assembly using (4) 3/8-16 x 1.00" stainless steel button head cap bolts, (8) 3/8" stainless steel flat washers, (4) 3/8" stainless steel lock nuts and (4) 1.00" OD plastic washers. Hand tighten.
- STEP 14. Install hood bar over grommet on driver wing. See figure 1. Note: Bend should face forward.
- STEP 15. Install passenger side wing assembly using the same fastener as step 14. Place passenger side wing into hood bar as the wing assembly is brought towards the center section. Center and level wings. Tighten and torque 3/8" stainless steel fasteners to 35 FT. LBS.

NOTE: Hood bar will fit tight against gasket as wing assemblies are tightened.

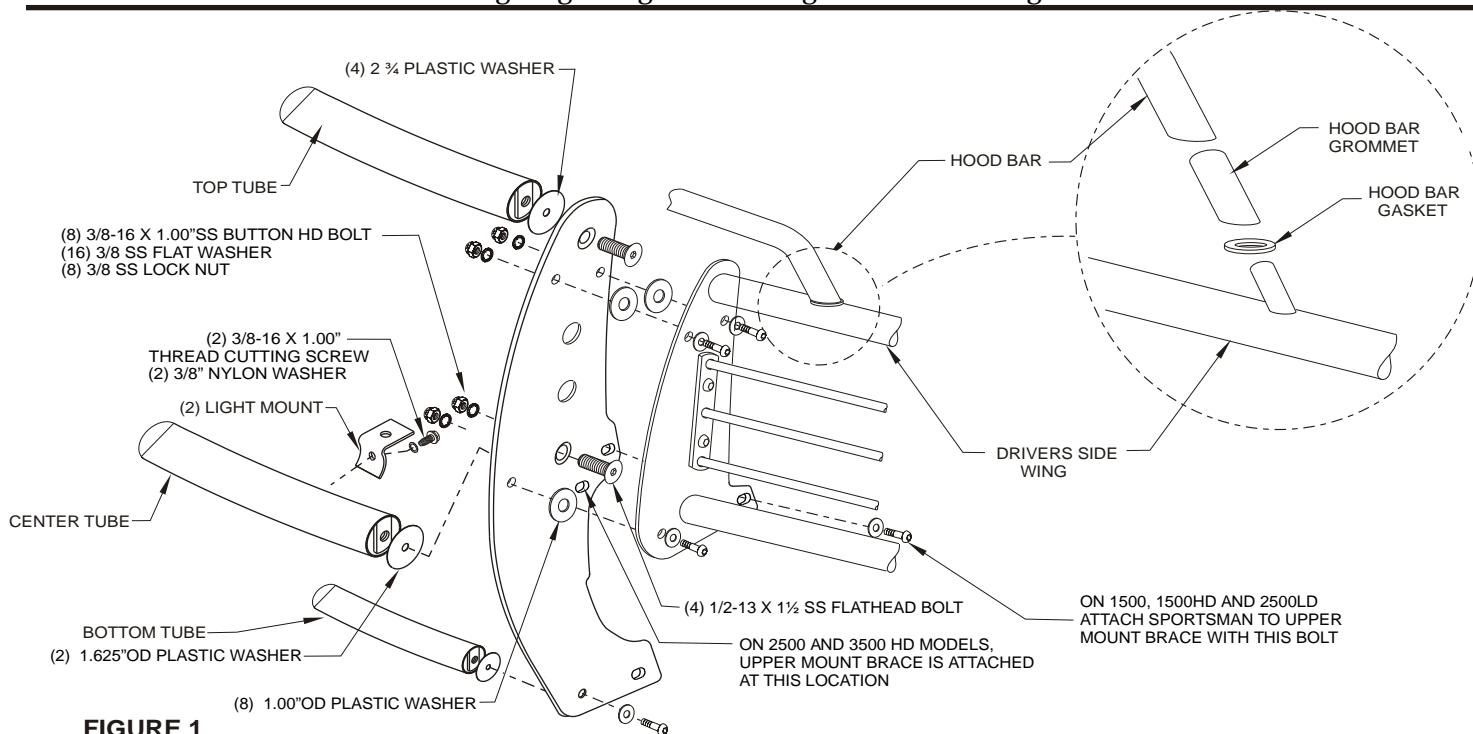


FIGURE 1

Finish protection - Westin products have a high quality finish that must be cared for like any other exposed finish on the vehicle. Protect the finish with a non-abrasive automotive wax (pure carnauba, for example) on a regular basis. The use of cleaner wax or any compound which contains an abrasive is detrimental, as the compounds scratch the finish and open it to corrosion.



Westin Automotive Products, Inc.
5200 N. Irwindale Ave. Suite 220
Irwindale, Ca. 91706

Thank You for choosing Westin products
For additional installation assistance please call
Customer service (800) 793-7846 or (507) 375-3559

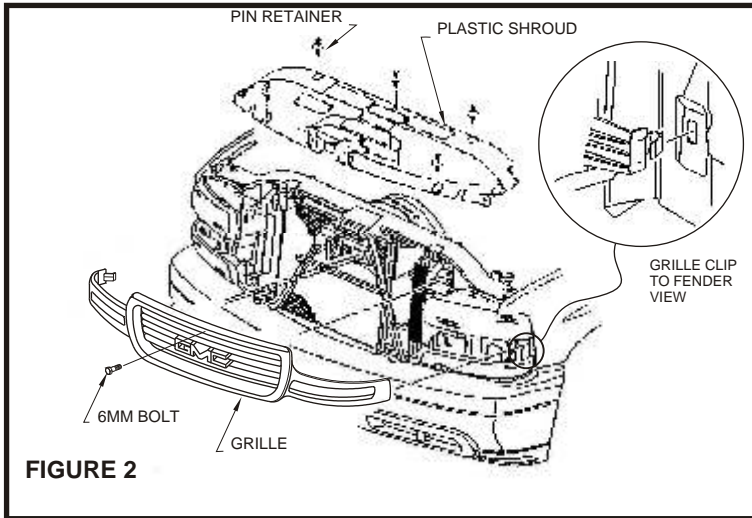


FIGURE 2

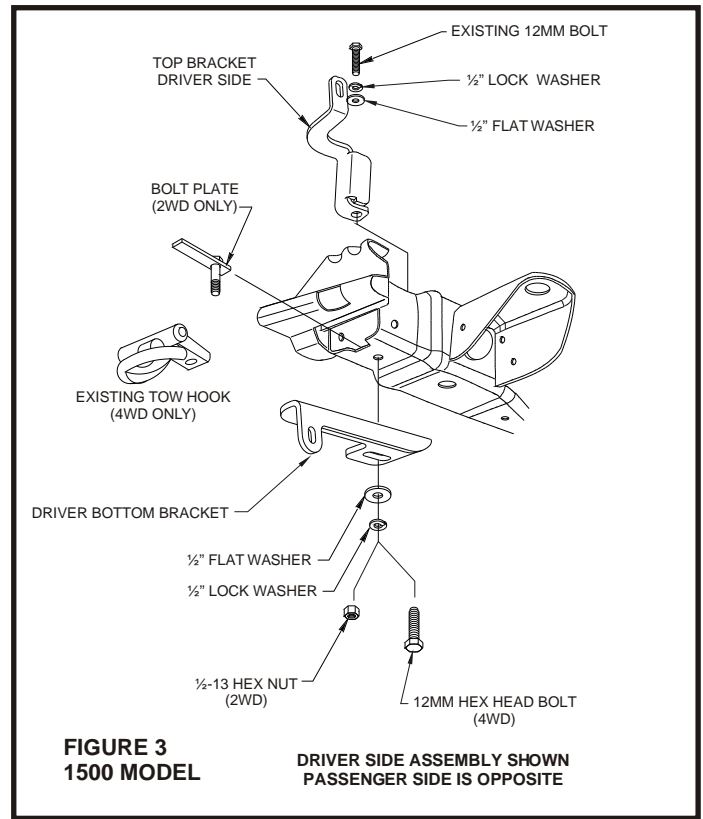


FIGURE 3
1500 MODEL

DRIVER SIDE ASSEMBLY SHOWN
PASSENGER SIDE IS OPPOSITE

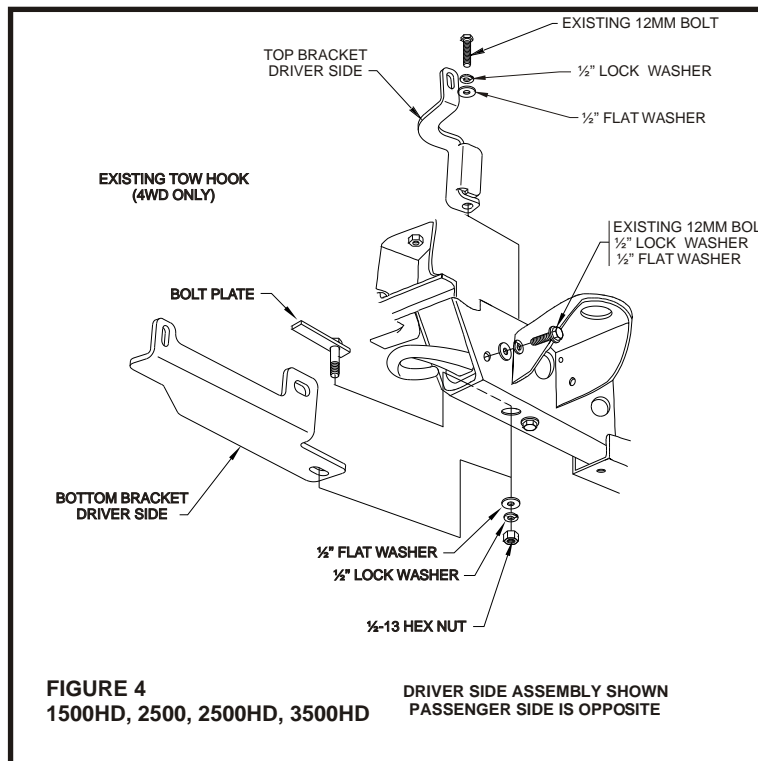


FIGURE 4
1500HD, 2500, 2500HD, 3500HD

DRIVER SIDE ASSEMBLY SHOWN
PASSENGER SIDE IS OPPOSITE

Finish protection - Westin products have a high quality finish that must be cared for like any other exposed finish on the vehicle. Protect the finish with a non-abrasive automotive wax (pure carnauba, for example) on a regular basis. The use of cleaner wax or any compound which contains an abrasive is detrimental, as the compounds scratch the finish and open it to corrosion.



Westin Automotive Products, Inc.
5200 N. Irwindale Ave. Suite 220
Irwindale, Ca. 91706

Thank You for choosing Westin products
For additional installation assistance please call
Customer service (800) 793-7846 or (507) 375-3559