



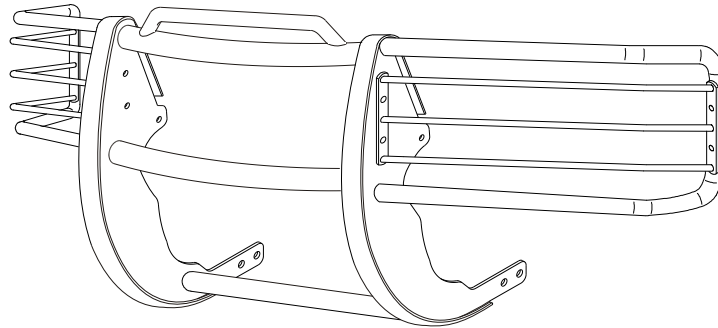
# INSTALLATION INSTRUCTIONS

APPLICATION: 1997-UP DODGE DAKOTA  
1998-UP DODGE DURANGO

## AUTOMOTIVE PRODUCTS, INC.

SPORTSMAN  
ASSEMBLY

41-0145  
44-0140



### PARTS KIT CONTENTS

| QTY | DESCRIPTION                     | QTY | DESCRIPTION                          |
|-----|---------------------------------|-----|--------------------------------------|
| 2   | UPRIGHT                         | 4   | 2 3/4" OD PLASTIC WASHER             |
| 2   | WING ASSEMBLY WITH LIGHT GUARDS | 2   | 1 5/8" OD PLASTIC WASHER             |
| 1   | BOTTOM TUBE                     | 2   | 3/8" NYLON WASHER                    |
| 1   | CENTER TUBE                     | 10  | 3/8-16 X 1.00" BUTTON HEAD CAP SCREW |
| 1   | HOOD BAR TOP TUBE ASSEMBLY      | 20  | 3/8" SS FLAT WASHER                  |
| 2   | BOTTOM MOUNT BRACKET            | 2   | 3/8-16 X 1.00" THREAD CUTTING SCREW  |
| 1   | TOP MOUNT BRACKET, PASSENGER    | 8   | 3/8-16" SS NYLOCK NUT                |
| 1   | TOP MOUNT BRACKET, DRIVER       | 2   | 3/8" INTERNAL TOOTH LOCK WASHER      |
| 2   | 1/2" LOCK WASHER                | 4   | 1/2-13 X 1.50" SS FLATHEAD BOLT      |
| 2   | LIGHT MOUNT                     | 8   | 1.00" PLASTIC WASHER                 |
| 4   | M12-1.75 X 40MM HEX HEAD BOLT   | 4   | 1/2-13 X 1.50" HEX HEAD BOLT SS      |
| 12  | 1/2" SAE FLAT WASHER            | 4   | 1/2-13 HEX HEAD NUT SS               |
| 2   | 3/8-16 X 1.25" HEX HEAD BOLT SS | 2   | 3/8" SPLIT LOCK WASHER SS            |
| 4   | 1/2" SPLIT LOCK WASHER SS       | 6   | 1/2-13 X 1.25" HEX HEAD BOLT         |
| 2   | 3/8-16 HEX HEAD NUT SS          | 6   | 1/2-13 HEX NUT                       |
|     |                                 | 8   | 1/2" FLAT WASHER SS                  |

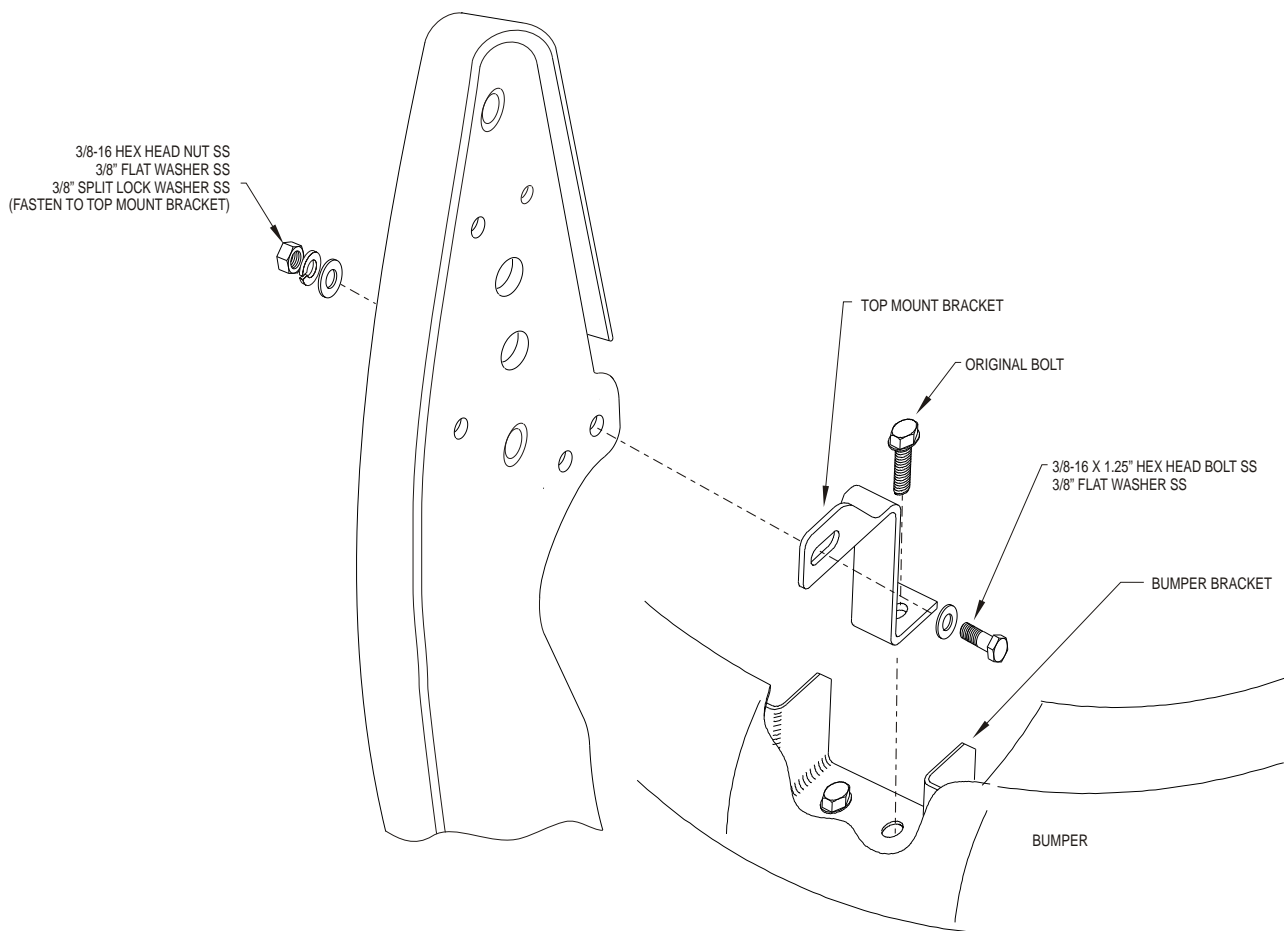
**NOTE:** SOME FASTENERS WILL BE LEFT OVER  
AFTER INSTALLATION IS COMPLETE

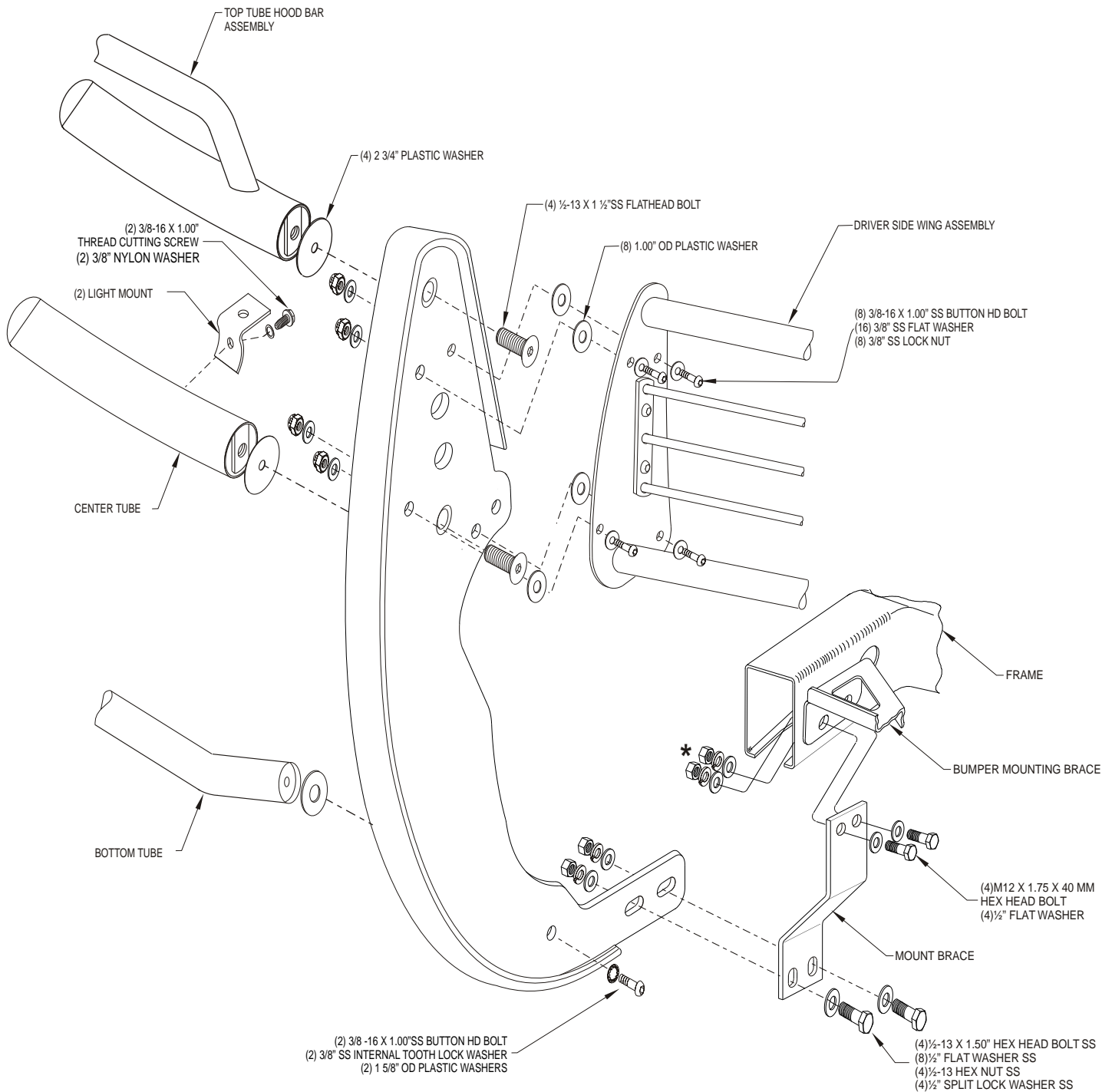
### TOOLS REQUIRED

|                         |                          |               |                    |
|-------------------------|--------------------------|---------------|--------------------|
| 3/4" COMBINATION WRENCH | 9/16" COMBINATION WRENCH | 9/16" SOCKET  | 3/4" SOCKET        |
| 18MM SOCKET             | 19MM SOCKET              | TORQUE WRENCH | 5/16" ALLEN WRENCH |
| 7/32" ALLEN WRENCH      |                          |               |                    |

- STEP 1. Remove the contents from the box and check for any damage. Verify all parts against the parts list.
- STEP 2. Read and understand instructions completely before beginning installation.
- STEP 3. Determine passenger and driver side uprights, hood bar top tube assembly and bottom tube. (Uprights are positioned so raised side of bolt holes are facing each other).
- STEP 4. Fasten uprights to hood bar top tube assembly, center tube and bottom tube using (4) 1/2-13 x 1.50" stainless steel flat head bolts, (4) 2.75" plastic washers, (2) 3/8-16 x 1.00" stainless steel button head cap screws, (2) 3/8" stainless steel internal tooth lock washers and (2) 1.625" plastic washers. Level tubes and torque 1/2" fasteners to 60 FT. LBS. And 3/8" fasteners to 30 FT. LBS.

- STEP 5. Determine passenger and driver wing assemblies. Install driver side wing assembly using (4) 3/8-16 x 1.00" stainless steel button head cap screw, (8) 3/8" stainless steel flat washers, (4) 3/8-16" stainless steel nylock nuts and 1.00" plastic washers. Tighten and torque to 30 FT. LBS. Repeat for opposite side.
- STEP 6. Open hood of truck. Locate the two bumper bracket bolts just behind the bumper. Remove the outermost bolt on each side and install the top mount brackets using the original bumper bolts.
- STEP 7. From under the vehicle, locate the bumper brace bolts on the outside of the frame. Remove and discard these bolts. Install the bottom mount brackets with the offset to the center of the vehicle and attach with (2) M12-1.75 x 40MM hex head bolts and (2) 1/2" flat washers. Leave loose and then repeat this step for the other side. SEE FIGURE.
- NOTE: Vehicles without bumper brace bolts, attach bracket using (4) 1/2-13 x 1.25" hex head bolts, (8) 1/2" flat washers, (4) 1/2" lock washers and (4) 1/2-13 hex nuts. (Install flat, lock and nut inside frame).
- STEP 8. Fasten Sportsman Assembly to the bottom mount brackets using (1) 1/2-13 x 1.50" hex head bolt, (2) 1/2" flat washer, (1) 1/2" Split lock washer, (1) 1/2-13 Hex nut. Leave loose and repeat for other side.
- STEP 9. Slowly rotate Sportsman Assembly up to the vehicle and fasten to top mount brackets using (1) 3/8-16 x 1.25" hex head bolt, (2) 3/8" flat washer and (1) 3/8-16 lock nut. Leave loose and repeat for other side. Install remaining 1/2" fasteners in bottom bracket. Hand tighten.
- STEP 10. Center and level Sportsman with vehicle. CLOSE HOOD SLOWLY to insure the hood clears the Sportsman Assembly then reopen.
- STEP 11. Tighten and torque all fasteners to: 1/2" fasteners= 65 FT.LBS, 3/8" fasteners= 30 FT.LBS, 12MM fasteners 60FT.LBS.





\* VEHICLES WITHOUT BUMPER BRACE  
 (4) 1/2-13 X 1.25" HEX HEAD BOLT  
 (4) 1/2" FLAT WASHER  
 (4) 1/2" LOCK WASHER  
 (4) 1/2-13 HEX NUT

**DRIVER SIDE ASSEMBLY SHOWN  
 PASSENGER SIDE IS OPPOSITE**

Finish protection - Westin products have a high quality finish that must be cared for like any other exposed finish on the vehicle. Protect the finish with a non-abrasive automotive wax (pure carnauba, for example) on a regular basis. The use of cleaner wax or any compound which contains an abrasive is detrimental, as the compounds scratch the finish and open it to corrosion.



Westin Automotive Products, Inc.  
 5200 N. Irwindale Ave. Suite 220  
 Irwindale, Ca. 91706

Thank You for choosing Westin products  
 For additional installation assistance please call  
 Customer service (800) 793-7846 or (507) 375-3559