



INSTALLATION INSTRUCTIONS

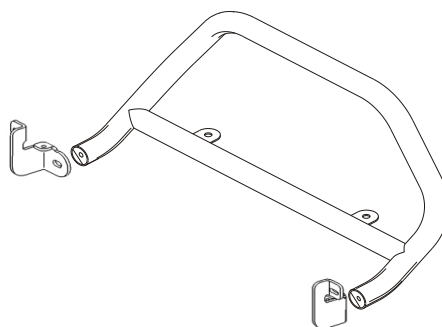
APPLICATION: 2001-2002 TOYOTA RAV4

AUTOMOTIVE PRODUCTS, INC.

SAFARI BAR
ASSEMBLY
30-0020
30-0025

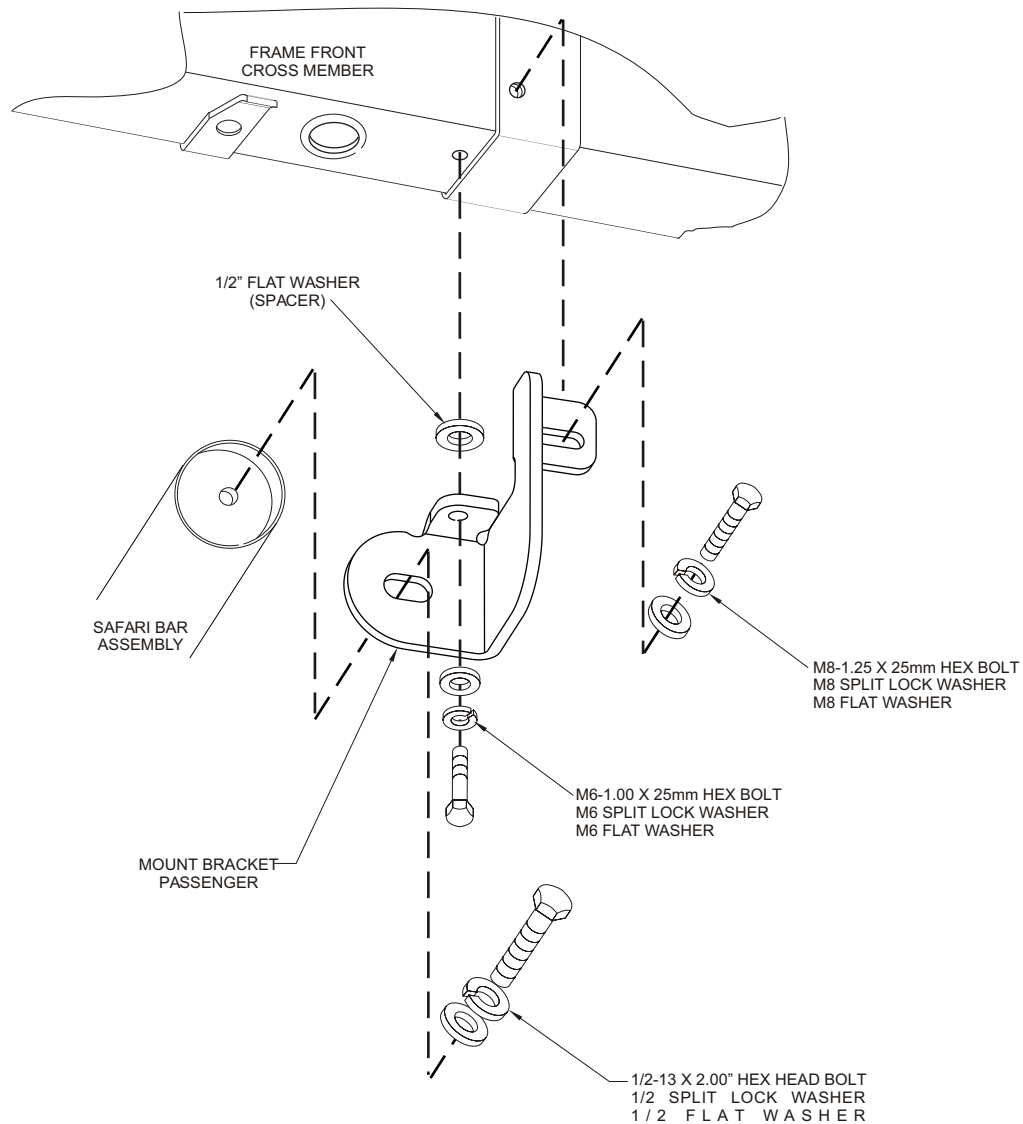
MOUNT KIT:

30-1205



PARTS KIT CONTENTS		
QTY	DESCRIPTION	TOOLS REQUIRED
1	SAFARI BAR ASSEMBLY (PURCHASED SEPARATELY)	3/4" SOCKET SMALL FLAT SCREW DRIVER UTILITY KNIFE 10MM SOCKET 13MM SOCKET 3" EXTENSION RATCHET TORQUE WRENCH
1	MOUNT BRACKET - DRIVER SIDE	
1	MOUNT BRACKET - PASSENGER SIDE	
2	1/2-13 X 2.00 HEX HEAD BOLT	
4	1/2" FLAT WASHER	
2	1/2" SPLIT LOCK WASHER	
2	M8- 1.25 X 25MM HEX HEAD BOLT GRADE 10.9	
2	M8 FLAT WASHER	
2	M8 SPLIT LOCK WASHER	
2	M6-1.00 X 25MM HEX HEAD BOLT GRADE 10.9	
2	M6 FLAT WASHER	
2	M6 SPLIT LOCK WASHER	

- STEP 1. Remove the contents from the box and check for any damage. Verify all parts against the parts list.
- STEP 2. Read and understand instructions completely before beginning installation.
- STEP 3. From under side of front bumper remove (6) M6 Hex Head Bolts with 10mm socket and (2) Plastic Push Pin (near center) with screw driver so that the plastic shroud can be pulled away to access the front frame cross member.
- STEP 4. Determine passenger and driver Mount Brackets. (Brackets line up with farthest out side M6 bolts that were previously removed).
- STEP 5. Fasten Mount Brackets in place using (2) M6-1.00 x 25mm Hex Head Bolt, (2) M6 Lock Washer, (2) M6 Flat Washer, (2) 1/2" Flat Washers as spacers, (2) M8-1.25 x 25mm Hex Head Bolt, (2) M8 Lock Washers, and (2) M8 Flat Washers. Torque 8mm fasteners on each side to 26 ft. lbs. Leave 6mm fasteners loose.
- STEP 6. Trim a notch in plastic shroud to clear the back side of Mount Bracket on each side so that it can be re-fastened.
- STEP 7. Remove 6mm fasteners from Mount Brackets and reinsert with plastic shroud in place. Replace (4) factory M6 Bolts and (2) Plastic Push Pins through remaining holes in plastic shroud. (Factory M6 Bolts with shoulder go through plastic bumper tabs.)
- STEP 8. Torque 6mm fasteners to 11 ft. Lbs.
- STEP 9. Fasten Safari Bar hoop to Mount Brackets using (2) 1/2-13 Hex Head Bolts, (2) 1/2" Lock Washers, (2) 1/2" Flat Washers. Torque 1/2" fasteners to 65 ft, lbs.



Finish protection - Westin products have a high quality finish that must be cared for like any other exposed finish on the vehicle. Protect the finish with a non-abrasive automotive wax (pure carnauba, for example) on a regular basis. The use of cleaner wax or any compound which contains an abrasive is detrimental, as the compounds scratch the finish and open it to corrosion.



Westin Automotive Products, Inc.
5200 N. Irwindale Ave. Suite 220
Irwindale, Ca. 91706

Thank You for choosing Westin products
For additional installation assistance please call
Customer service (800) 793-7846 or (507) 375-3559