



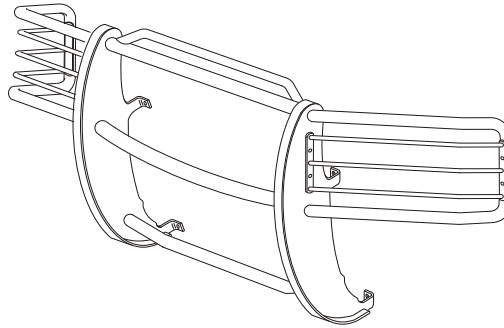
# INSTALLATION INSTRUCTIONS

APPLICATION: 1994-01 DODGE RAM 1500 2/4WD  
1994-02 DODGE RAM 2500/3500 2/4WD

## AUTOMOTIVE PRODUCTS, INC.

SPORTSMAN  
ASSEMBLY

41-0605  
44-0600



### PARTS KIT CONTENTS

QTY	DESCRIPTION	QTY	DESCRIPTION
2	UPRIGHT	2	3/8-16 X 1.25" S.S. HEX HEAD BOLT
2	WING ASSEMBLIES W/LIGHT GUARDS	8	1.00" OD PLASTIC WASHER
1	HOOD BAR/TOP TUBE ASSEMBLY	10	3/8-16 X 1.00" S.S. BUTTON HEAD BOLT
1	CENTER TUBE	2	3/8-16 X 1.00" THREAD CUTTING SCREW
1	BOTTOM TUBE	20	3/8" S.S. FLAT WASHER
2	LIGHT MOUNTS	4	3/8" S.S. LOCK WASHER
2	TOP CLAMP ASSEMBLIES	2	3/8" INTERNAL TOOTH LOCK WASHER
2	BOTTOM FRAME BRACKET	8	3/8" S.S. LOCK NUT
2	1/2" FLAT WASHER	2	3/8" NYLON WASHER
2	1/2" LOCK WASHER	4	2.75" OD PLASTIC WASHER
4	1/2-13 X .50" S.S. FLAT HEAD BOLT	2	1.625" OD PLASTIC WASHER
2	3/8-16 X 1.50" S.S. HEX HEAD BOLT		

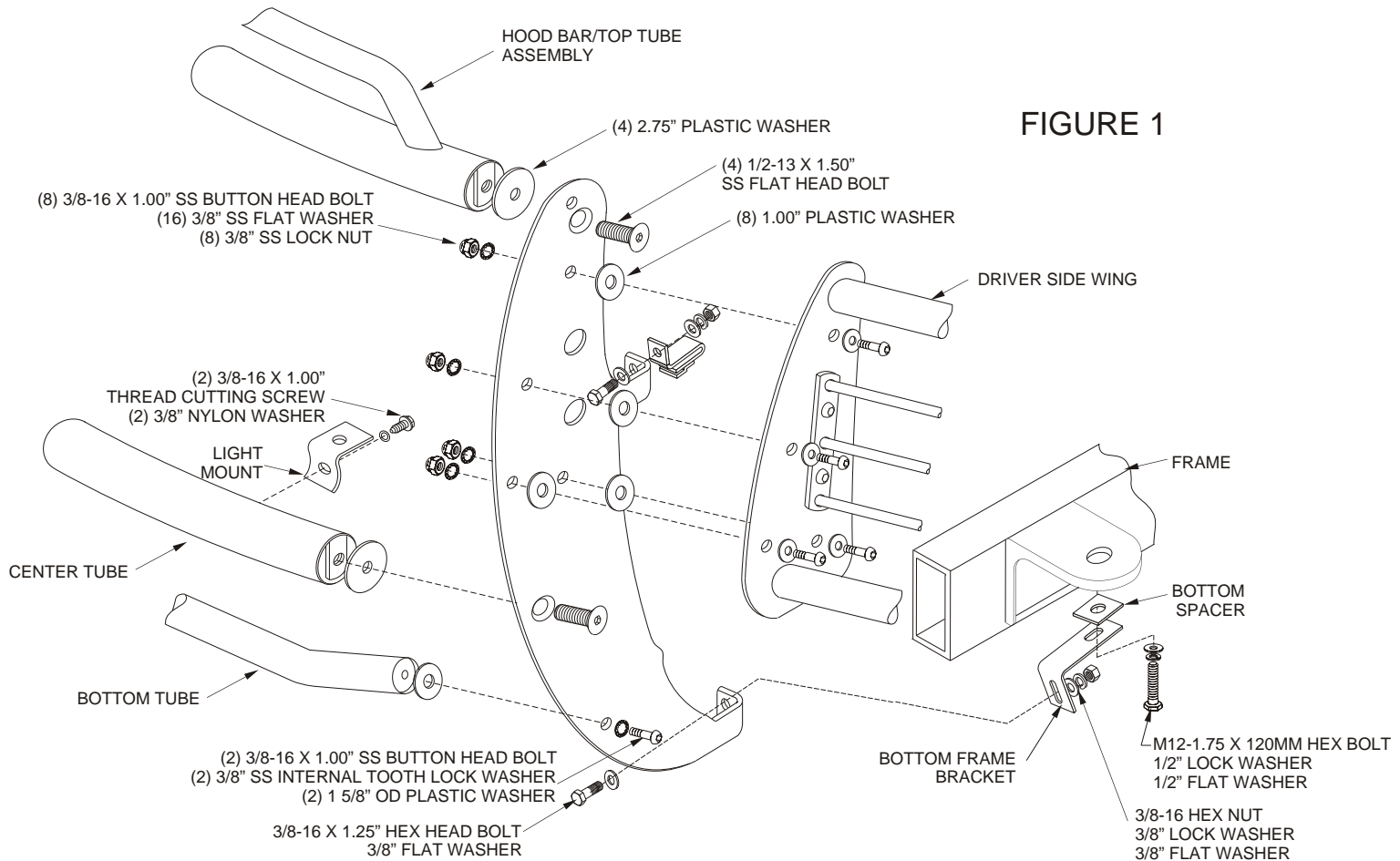
### TOOLS REQUIRED

19MM SOCKET	18MM SOCKET	9/16" SOCKET	5/8" WRENCH
9/16" WRENCH	5/16" ALLEN WRENCH	RATCHET	SOCKET EXTENSION
TORQUE WRENCH	7/16" DRILL BIT	DRILL	7/32" ALLEN WRENCH

- STEP 1. Remove the contents from the box and check for any damage. Verify all parts against the parts list.
- STEP 2. Read and understand instructions before beginning installation.
- STEP 3. Determine passenger/driver side uprights, hood bar/top tube assembly and bottom tube. (Uprights are positioned so raised side of bolt holes are facing each other. See Figure 1.
- STEP 4. Fasten uprights to hood bar/top tube assembly, center tube and bottom using (4) 1/2-13 x 1.50" stainless steel flat head bolts, (4) 2.75" plastic washers, (2) 3/8-16 x 1.00" stainless steel button head bolts, (2) 3/8" stainless steel internal tooth lock washers and (2) 1.625" plastic washers. Level tubes and torque 1/2" fasteners to 60 FT. LBS. and 3/8" fasteners to 30 FT. LBS.
- STEP 5. Raise hood. Hook top bumper clamp over back edge of bumper. Be sure the bumper metal is hooked in the small slot in the bumper clamp. NOTE: To help prevent scratching the bumper, apply duct tape or masking tape to the areas of the bumper where Sportsman may contact. Remove tape after

installation is complete.

- STEP 6. Place black rubber u-channel on the inside of the Sportsman uprights.
- STEP 7. Position Sportsman Assembly up to the bumper and bolt to top bumper clamps with (2) 3/8-16 x 1.50" hex head bolts, (4) 3/8" flat washers, (2) 3/8" lock washers and (2) 3/8-16" hex nuts. Do not tighten.
- STEP 8. Drill a 7/16" diameter hole through the front of air dam at the lower mount tab location. Remove the two front body mount bolts. Bolt the bottom frame brackets to the body mounts using (2) M12-1.75" x 120MM hex head bolts, (2) 1/2" lock washers and (2) 1/2" flat washers and 1/4" spacers are placed between the body mount and frame bracket. Bolt the bottom tab on upright through the air dam to the bottom frame bracket using 3/8-16 x 1.25" bolts as shown. Leave about 1/4" of space between the frame bracket and the back of the air dam to allow upright to be tightened against the bumper. Torque body mount bolts to 65 FT. LBS.
- STEP 9. Determine passenger and driver wing assemblies. See Figure 1. Install driver side wing assembly using (4) 3/8-16 x 1.00" stainless steel button head bolts, (8) 3/8" stainless steel flat washers, (4) 3/8-16" stainless steel lock nuts and (4) 1.00" plastic washers. Tighten and torque to 35 FT. LBS. Repeat for opposite side.
- STEP 10. Check to be sure the Sportsman is centered and level. Tighten 3/8" fasteners at the top and bottom brackets until uprights are tight against the bumper. There may be a gap between the upright tab. This is allowable to insure the Sportsman will pull up tight against the bumper.
- STEP 11. Lower hood SLOWLY! Check to be sure vehicle grille does not contact top bracket. If there is clearance push down on hood to lock. If there is contact, the Sportsman and/or bumper may need to be adjusted to allow for proper clearance.



Finish protection - Westin products have a high quality finish that must be cared for like any other exposed finish on the vehicle. Protect the finish with a non-abrasive automotive wax (pure carnauba, for example) on a regular basis. The use of cleaner wax or any compound which contains an abrasive is detrimental, as the compounds scratch the finish and open it to corrosion.



Westin Automotive Products, Inc.  
5200 N. Irwindale Ave., Suite 220  
Irwindale, Ca. 91706

Thank You for choosing Westin products  
For additional installation assistance please call  
Customer service (800) 793-7846 or (507) 375-3559