



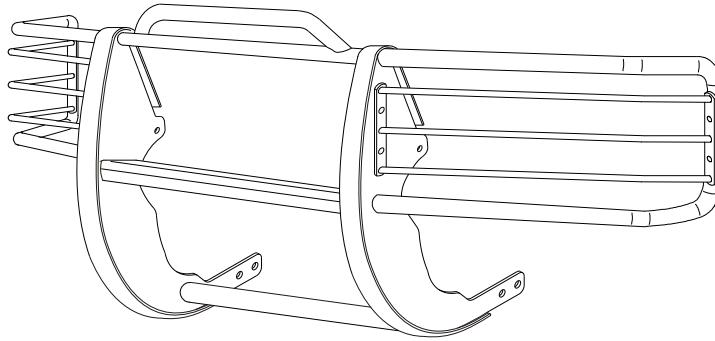
# INSTALLATION INSTRUCTIONS

APPLICATION: 1997-03 DODGE DAKOTA  
1998-UP DODGE DURANGO

## AUTOMOTIVE PRODUCTS, INC.

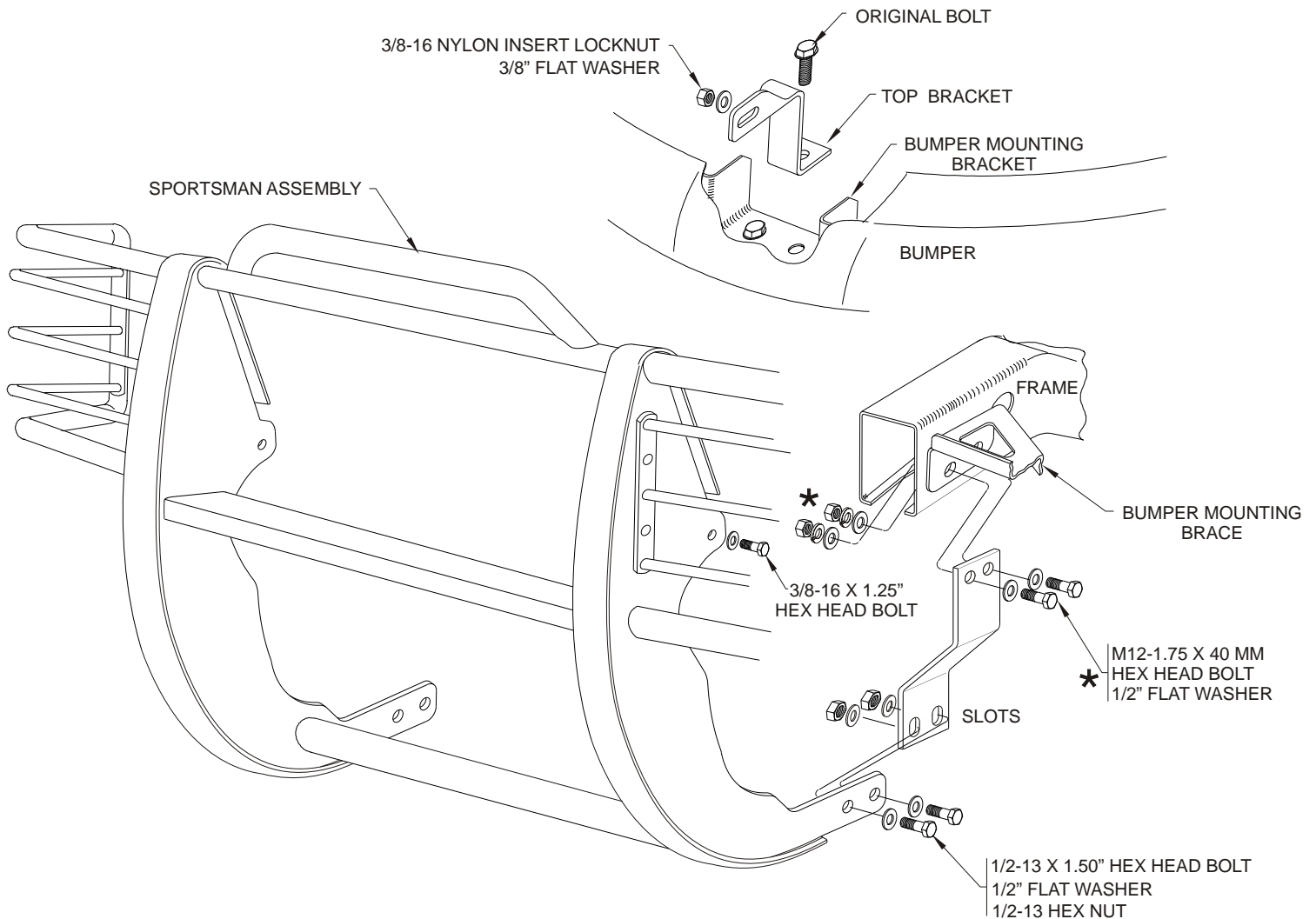
SPORTSMAN  
ASSEMBLY

40-0145



QTY	PARTS KIT CONTENTS DESCRIPTION	TOOLS REQUIRED
1	SPORTSMAN ASSEMBLY	3/4" WRENCH
2	TOP BRACKET	3/4" SOCKET
2	BOTTOM BRACKET	9/16" WRENCH
4	1/2-13 X 1.50" HEX HEAD BOLT	9/16" SOCKET
6	1/2-13 x 1.25" HEX HEAD BOLT	18MM SOCKET
24	1/2" FLAT WASHER	19MM SOCKET
6	1/2" LOCK WASHER	TORQUE WRENCH
4	1/2-13 NYLON INSERT LOCK NUT	
6	1/2-13 HEX NUT	
2	3/8-16 X 1.25" HEX HEAD BOLT	
4	3/8" FLAT WASHER	
2	3/8-16 NYLON INSERT LOCKNUT	
4	M12-1.75 X 40MM HEX HEAD BOLT	
NOTE: SOME FASTENERS WILL BE LEFT OVER AFTER INSTALLATION.		

- STEP 1. Remove the contents from the box and check for any damage. Verify all parts against the parts list.
- STEP 2. Read and understand instructions completely before beginning installation.
- STEP 3. Open hood of truck. Locate the two bumper bracket bolts just behind the bumper. Remove the outermost bolt from each side and install top brackets using the original bumper bolts.
- STEP 4. From under vehicle, locate bumper brace bolts on outside of frame. Remove and discard bolts. Position bottom brackets with the offset to the center of vehicle and attach as shown. Leave loose. SEE FIGURE 1.
- NOTE: Vehicles without bumper brace bolts, attach bracket using 1/2" fasteners. Install lock, flat, and nut inside frame.
- STEP 5. Place cardboard under vehicle. Lay Sportsman on cardboard with front side down. Align outermost upright holes with innermost rear bracket slots and fasten together using 1/2" fasteners as shown. Leave loose.
- STEP 6. Slowly rotate Sportsman Assembly up to vehicle and attach to top brackets using 3/8" fasteners. Leave loose. Install remaining 1/2" fasteners in bottom brackets. Hand tighten.
- STEP 7. Center and level Sportsman with vehicle. Close Hood Slowly, to insure the hood clears the Sportsman Assembly then reopen.
- STEP 8. Torque 1/2" fasteners to 65 FT. LBS; 3/8" fasteners to 30 FT. LBS. and 12mm fasteners to 60 FT. LBS.



**VEHICLES WITHOUT BUMPER BRACE**

- 1/2-13 X 1.25" HEX HEAD BOLT
- 1/2" FLAT WASHER
- \* 1/2" FLAT WASHER
- 1/2-13 HEX NUT

**FIGURE 1**

**INSTALLATION VIEW OF DRIVER SIDE, PASSENGER SIDE OPPOSITE**

Finish protection - Westin products have a high quality finish that must be cared for like any other exposed finish on the vehicle. Protect the finish with a non-abrasive automotive wax (pure carnauba, for example) on a regular basis. The use of cleaner wax or any compound which contains an abrasive is detrimental, as the compounds scratch the finish and open it to corrosion.



Westin Automotive Products, Inc.  
5200 N. Irwindale Ave., Suite 220  
Irwindale, Ca. 91706

Thank You for choosing Westin products  
For additional installation assistance please call  
Customer service (800) 793- 7846 or (507) 375-3559