

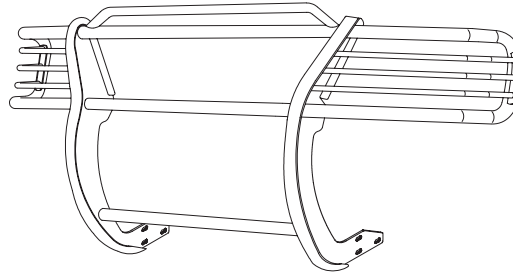


INSTALLATION INSTRUCTIONS

APPLICATION: 1999-04 FORD F-150/250 LIGHT DUTY 2WD
 1999-02 EXPEDITION 2WD
 2001-03 FORD F-150 SUPERCREW 2WD

AUTOMOTIVE PRODUCTS, INC.

SPORTSMAN
 ASSEMBLY
40-0485



PARTS KIT CONTENTS

ITEM	QTY	DESCRIPTION	ITEM	QTY	DESCRIPTION
1	1	SPORTSMAN ASSEMBLY	10	4	1/2-13 X 1.25" HEX HEAD BOLT
2	2	LIGHT GUARD ASSEMBLY	11	12	1/2" FLAT WASHER
3	2	TOP BRACKET, PASSENGER AND DRIVER	12	6	1/2" LOCK WASHER
4	2	BOTTOM BRACKET, PASSENGER AND DRIVER	13	6	1/2-13 HEX NUT
5	4	SPACER PLATE	14	2	M12-1.75 HEX JAM/REVERSIBLE NUT
6	4	1/2-13 X 5.00" HEX HEAD BOLT	15	2	3/8-16 X 1.00" HEX HEAD BOLT
7	8	1/2" FLAT WASHER, BLUE ZINC	16	4	3/8" FLAT WASHER
8	4	1/2" LOCK WASHER, BLUE ZINC	17	2	3/8" LOCK WASHER
9	4	1/2-13 HEX NUT, BLUE ZINC	18	2	3/8-16 HEX NUT

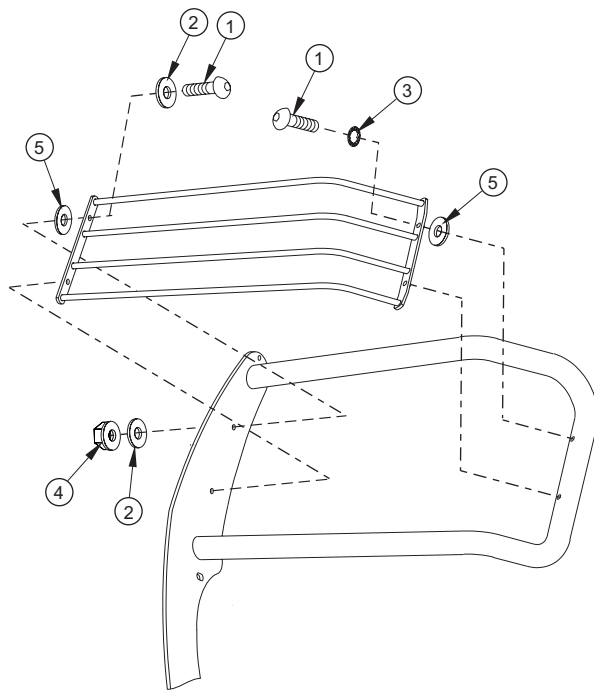
TOOLS REQUIRED

3/4" SOCKET	3/4" WRENCH	9/16" SOCKET	9/16" WRENCH	7/16" WRENCH
5/32" HEX WRENCH	19MM SOCKET	RATCHET	TORQUE WRENCH	UTILITY KNIFE

- STEP 1. Remove the contents from box and check for damage. Verify all parts are present. Read instructions completely before beginning.
- STEP 2. Attach light guard assemblies as shown. **SEE FIGURE 1.**
Note: If existing openings in lower air-dam are not present, small slots must be cut into air-dam for installation.
- STEP 3. Locate air-dam template included in the parts box. Glue template to a piece of cardboard. (Sportsman box works well for this). Cut template out, including tabs, along lines with a utility knife. Fold the small tabs over, one in each direction.
- STEP 4. Locate the center point on the top of the air-dam and mark with marker. To locate the bottom center point, look on the back side of the air-dam. There will be a series of small fins. Locate the center one and put a small mark on the lower air-dam. **SEE FIGURE 3.**
Note: Vehicles with license plate holders, remove 2 push pin type retainers and move holder out of place.
- STEP 5. Place the template up to the air-dam. (Notice the shape of the template). Center the top of template up with top center and tape the small tabs on the template to air-dam. Align the bottom of template up with the lower center mark on air -dam. Once template is in place and centered on air dam, tape the remaining tabs to the air-dam.
- STEP 6. Measure from cardboard template, over 19-1/8" and draw a line going up the air-dam. Once line is in place,

measure 1.00" from that line towards the center of vehicle and draw another line. To determine the height of the slot, place a ruler or straight edge on the bottom edge of the air-dam. **SEE FIGURE 4.** (Air-dam has a curve, so measure from the lowest part). Measure up 4½" from where the ruler and air-dam meet. Measure straight, **Do not** follow the contour of the air-dam. Repeat for the opposite side.

- STEP 7. Cut out the slot using a sharp utility knife. When cutting top of slot, drill (2) ½" holes next to each other. Clean up the edges of the slot using a file or sandpaper.
- STEP 8. Install bottom mount brackets using the spacer plate and 1/2" fasteners as shown. Install spacer plate towards center of vehicle. Hand tighten. **SEE FIGURE 2.**
- STEP 9. From inside of frame behind bumper, position top brackets so that front of bracket protrudes between top of bumper and bottom of grille. (Push down on bumper cover to slide bracket through). Locate bumper bolt ends (front side of frame), then position hole of bracket on the end of the top bolt, over existing nut. Hand tighten supplied 12mm jam nut over bracket. **SEE FIGURE 2.**
NOTE: 1997-98 models use lower hole on bracket. 1999-01 models use upper hole on bracket.
- STEP 10. Slide Sportsman back so that the rearmost slots align with the rearmost slots on the brackets. Fasten together using 1/2" fasteners as shown. Finger tighten.
- STEP 11. Rotate Sportsman up towards vehicle until remaining slots are aligned. Secure using 1/2" fasteners. Attach top bracket using 3/8" fasteners as shown.
- STEP 12. Center and level Sportsman. Tighten and torque fasteners: Frame bolts to 45 Ft. Lbs; 1/2" fasteners to 65 Ft. Lbs; 12mm jam nuts to 60 FT. LBS; 3/8" bolts to 30 FT. LBS.



ITEM	QTY.	DESCRIPTION
1	8	1/4-20 X 1.00" BUTTON HEAD BOLT
2	8	1/4" FLAT WASHER
3	4	1/4" INTERNAL TOOTH LOCK WASHER
4	4	1/4-20 NYLON NUT
5	8	RUBBER WASHER

NOTE: ALL FASTENERS MAY NOT BE USED.

FIGURE 1
LIGHT GUARD INSTALLATION

Finish protection - Westin products have a high quality finish that must be cared for like any other exposed finish on the vehicle. Protect the finish with a non-abrasive automotive wax (pure carnauba, for example) on a regular basis. The use of cleaner wax or any compound which contains an abrasive is detrimental, as the compounds scratch the finish and open it to corrosion.

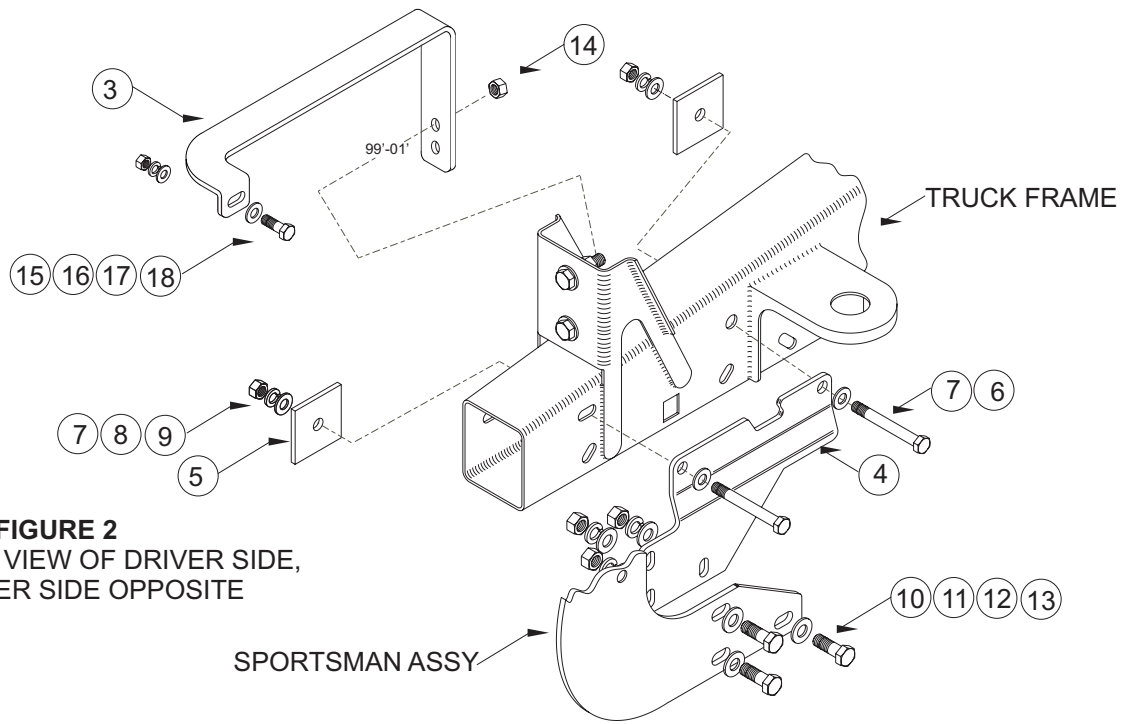


FIGURE 2
 INSTALLATION VIEW OF DRIVER SIDE,
 PASSENGER SIDE OPPOSITE

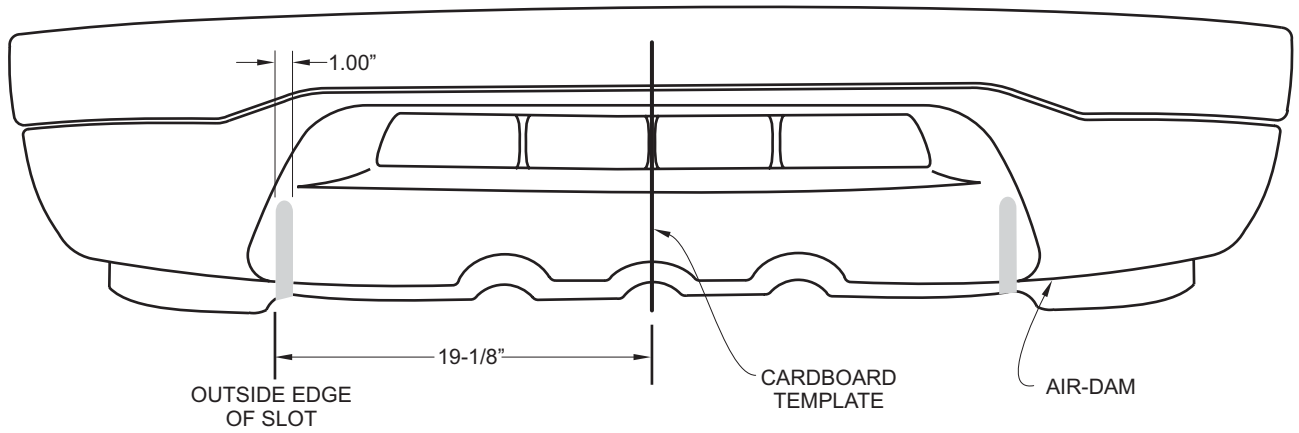


FIGURE 3

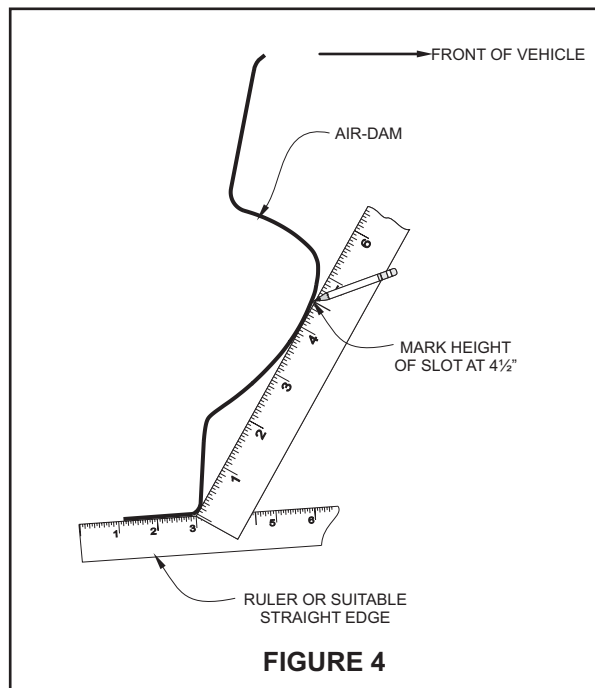


FIGURE 4