



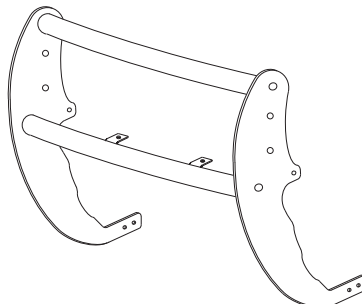
INSTALLATION INSTRUCTIONS

APPLICATION: 1998-01 BLAZER/ENVOY/JIMMY 4WD ONLY
 1998-01 OLDSMOBILE BRAVADA
 1998-04 GMC SONOMA PICKUP 4WD ONLY

AUTOMOTIVE PRODUCTS, INC.

PUSH BAR
ASSEMBLIES

36-1890
36-1895



PARTS KIT CONTENTS

ITEM	QTY	DESCRIPTION	ITEM	QTY	DESCRIPTION
1	2	UPRIGHT, PASSENGER AND DRIVER	11	2	1/2" FLAT WASHER
2	1	TOP TUBE ASSEMBLY	12	2	M10-1.50 X 45MM HEX HEAD BOLT
3	1	BOTTOM TUBE ASSEMBLY	13	2	3/8-16 X 1.00" SELF THREADING BOLT
4	2	TOP BRACKET, PASSENGER AND DRIVER	14	10	3/8-16 X 1.00" HEX HEAD BOLT
5	2	BOTTOM BRACKET, PASSENGER AND DRIVER	15	10	3/8" FLAT WASHER
6	2	LIGHT MOUNT	16	10	3/8" LOCK WASHER
7	2	SPACER TUBES	17	10	3/8-16 HEX NUT
8	2	7/16" NYLON WASHER			
9	4	PUSH BAR GASKET			
10	4	1/2-13 X 1.50" SOCKET, FLAT HEAD BOLT			

NOTE: SOME FASTENERS MAY NOT BE USED.

TOOLS REQUIRED

9/16" SOCKET
5/32" HEX WRENCH

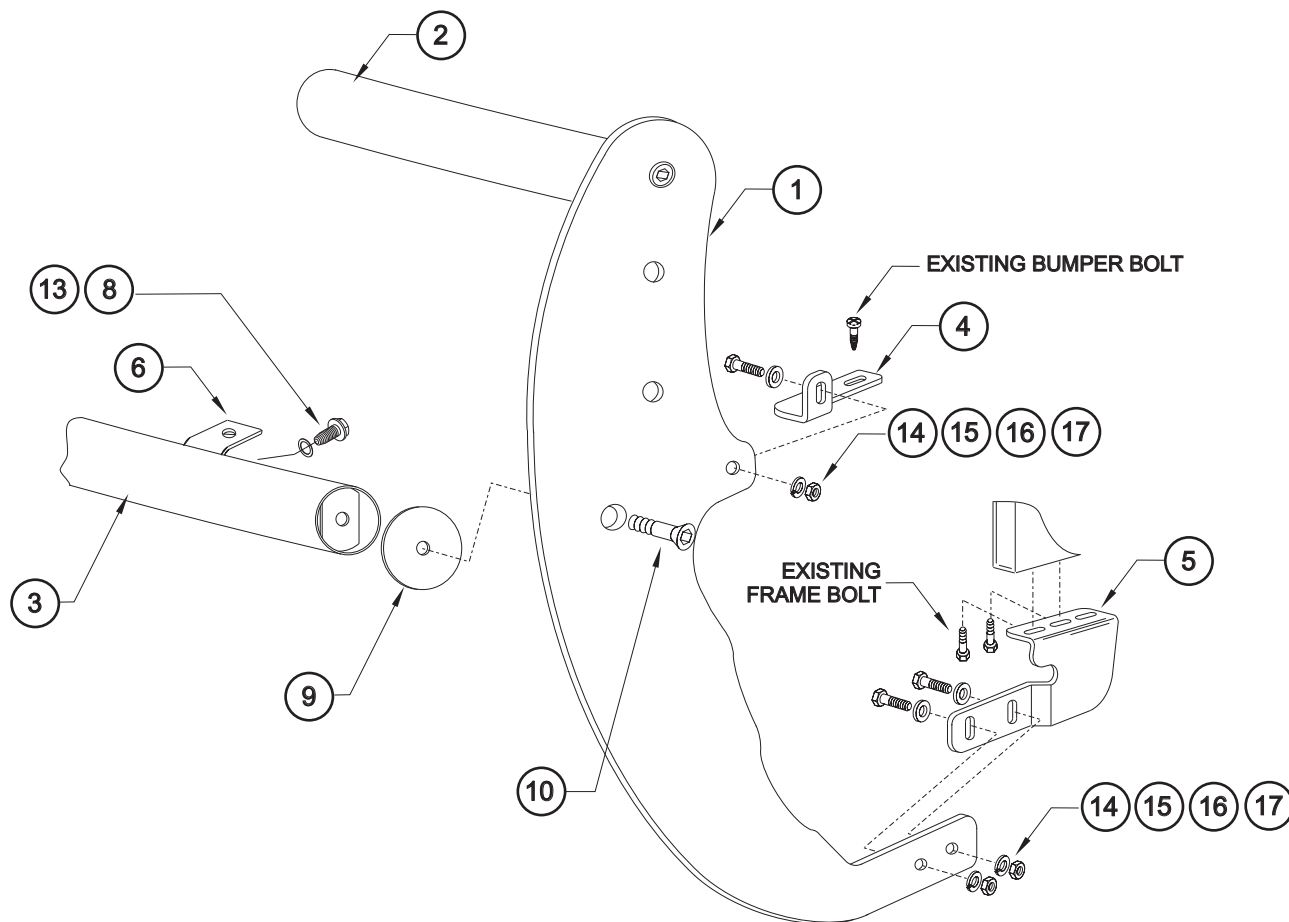
9/16" WRENCH
RATCHET

15MM SOCKET
TORQUE WRENCH

17MM SOCKET

- STEP 1. Remove the contents from box and check for damage. Verify all parts are present. Read instructions completely before beginning.
- STEP 2. Determine passenger and driver uprights and top and bottom tube assemblies. **NOTE:** Uprights are positioned so raised side of bolt holes are facing each other. The tube with the two holes pierced is the bottom tube assembly. Attach uprights to top and bottom tube as shown. Place push bar gaskets between the uprights and tubes.
- STEP 3. Attach light mount tabs to bottom tube as shown. Torque to 20 FT.LBS.
- STEP 4. Remove grille from vehicle. **NOTE:** On Chevy Blazer, the grille is attached with (9) metal clips and the turn signals are attached to grille. On Sonoma, Jimmy and Bravada, the grille is attached by (7) metal clips. Only the center of the grille is removed. When removing the grille from the vehicle, pull firmly on the grille until the metal clips release. Work from passenger side towards the center and finish on the drivers side. Set grille aside to avoid damage.
- STEP 5. Remove top bumper bolts located on top of each frame rail. **NOTE:** On LS style Chevy Blazers, Bravada and all Sonoma/Jimmy vehicles, a spacer tube is placed between the frame and bracket.
- STEP 6. Attach top bracket as shown. **NOTE:** On LT style Chevy Blazer, use a 1/2" flat washer as a spacer between the top brackets. Use the (2) bolts previously removed to fasten the top bracket to the frame. Hand tighten.

- STEP 7. Attach Push Bar uprights to top brackets as shown. Hand tighten.
- STEP 8. Torque the top bracket fasteners to 35 FT.LBS. Remove Push Bar Assembly and reinstall grille. **NOTE:** First connect all light and make sure turn signals work.
- STEP 9. Attach Push Bar Assembly to top brackets as described in step 6. Hand tighten.
- STEP 10. Remove (4) skid plate bolts from bottom of frame (2 on each side) and set aside. Attach bottom brackets to inside of uprights as shown. Hand tighten. Attach bottom bracket to frame using the previously removed bolts from the skid plate. Hand tighten.
- STEP 11. Center and level Push Bar Assembly. Torque 3/8" fasteners to 30 FT.LBS.



INSTALLATION VIEW OF DRIVER SIDE, PASSENGER SIDE OPPOSITE

Finish protection - Westin products have a high quality finish that must be cared for like any other exposed finish on the vehicle. Protect the finish with a non-abrasive automotive wax (pure carnauba, for example) on a regular basis. The use of cleaner wax or any compound which contains an abrasive is detrimental, as the compounds scratch the finish and open it to corrosion.



Westin Automotive Products, Inc.
5200 N. Irwindale Ave. Suite 220
Irwindale, Ca. 91706

Thank You for choosing Westin products
For additional installation assistance please call
Customer service (800) 793-7846 or (507) 375-3559