



# INSTALLATION INSTRUCTIONS

APPLICATION: 1995-97 GMC JIMMY/CHEVY BLAZER  
1994-97 GMC/CHEVY S-PICKUP

## AUTOMOTIVE PRODUCTS, INC.

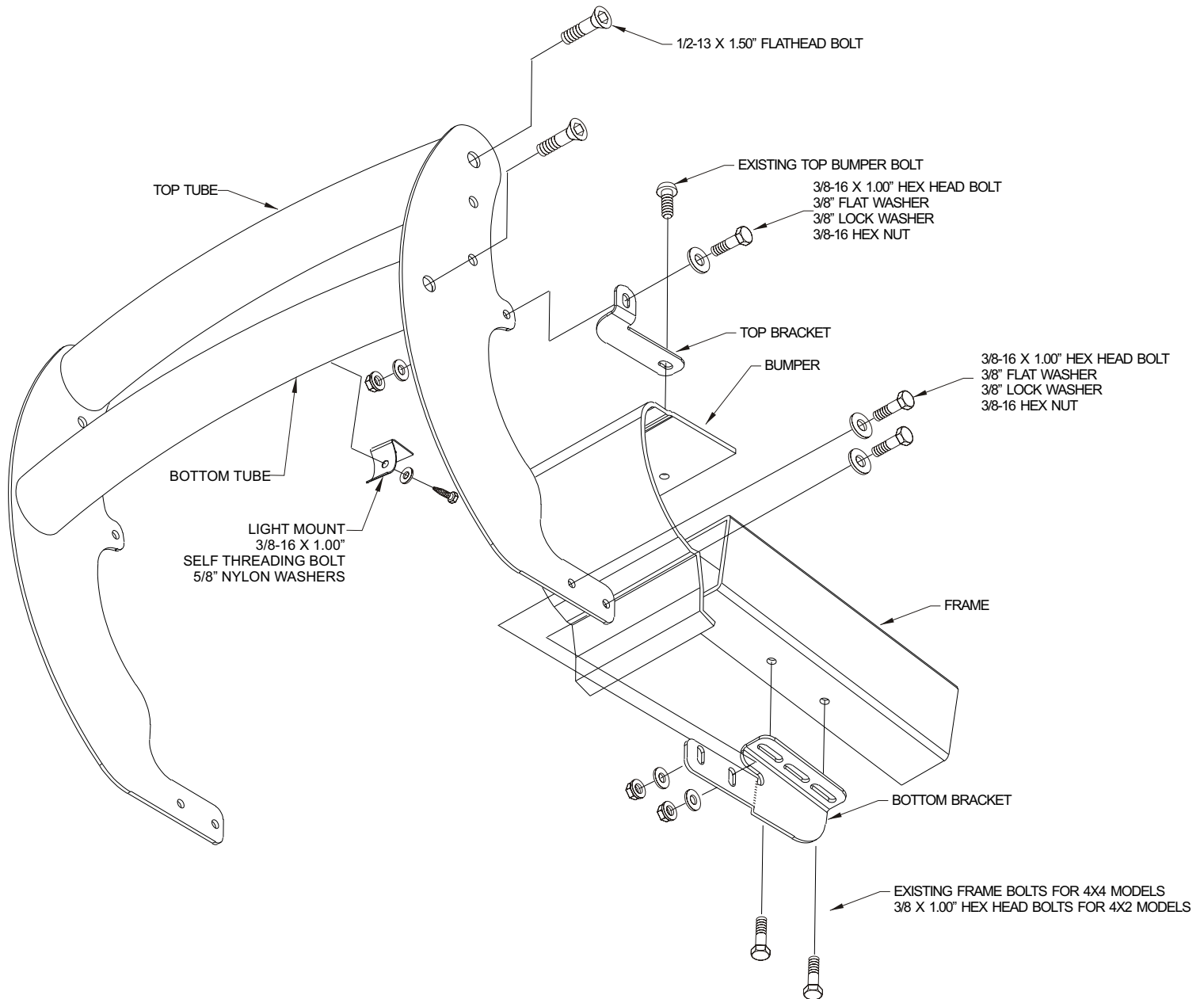
PUSH BAR ASSEMBLIES  <b>36-1650</b> <b>36-1660</b>	
---	--

QTY	PARTS KIT CONTENTS DESCRIPTION	TOOLS REQUIRED
2	UPRIGHT	9/16" SOCKET 9/16" WRENCH 5/16" HEX WRENCH 15MM SOCKET T-50 TORX BIT TORQUE WRENCH
1	TOP TUBE ASSEMBLY	
1	BOTTOM TUBE ASSEMBLY	
2	LIGHT MOUNT	
2	TOP BRACKET	
2	BOTTOM BRACKET	
4	PUSH BAR GASKET	
2	5/8" NYLON WASHER	
4	1/2-13 X 1.50" FLATHEAD BOLT	
10	3/8-16 X 1.00" HEX HEAD BOLT	
2	3/8-16 X 1.00" THREAD CUTTING	
10	3/8" FLAT WASHER	
10	3/8-16 HEX NUT	

- STEP 1. Remove the contents from the box and check for any damage. Verify all parts against the parts list.
- STEP 2. Read and understand instructions completely before beginning installation.
- STEP 3. Determine passenger and driver uprights and top and bottom tube assemblies. **NOTE:** Uprights are positioned so raised side of bolt holes are facing each other and the tube with the two holes pierced is the bottom tube assembly. Attach uprights to top and bottom tube as shown. Place push bar gaskets between the uprights and tubes.
- STEP 4. Attach light mount tabs to bottom tube as shown. Torque to 20 FT.LBS.
- STEP 5. Remove grille from vehicle by removing top bumper bolts with a T-50 torx bit and attach top brackets to bumper using the bolts previously removed as shown. Hand tighten.
- STEP 6. Raise push bar assembly to bumper and attach uprights to top brackets as shown. Hand tighten. **NOTE:** Keep uprights from contacting bumper.
- STEP 7. **4x4 models:** Remove four bolts that mount cross member to frame located just inside the tow hooks. Attach bottom brackets to uprights using 3/8" fasteners and attach to frame using bolts previously removed.  
**4x2 models:** Attach bottom brackets to frame using 3/8" fasteners.

STEP 8. Make sure push bar is centered and level. Torque 3/8" fasteners to 25 FT.LBS.

STEP 9. Re-install grille on vehicle.



Finish protection - Westin products have a high quality finish that must be cared for like any other exposed finish on the vehicle. Protect the finish with a non-abrasive automotive wax (pure carnauba, for example) on a regular basis. The use of cleaner wax or any compound which contains an abrasive is detrimental, as the compounds scratch the finish and open it to corrosion.



Westin Automotive Products, Inc.  
5200 N. Irwindale Ave. Suite 220  
Irwindale, Ca. 91706

Thank You for choosing Westin products  
For additional installation assistance please call  
Customer service (800) 793-7846 or (507) 375-3559