



SIGNATURE OF QUALITY

AUTOMOTIVE PRODUCTS, INC.

INSTALLATION INSTRUCTIONS

APPLICATION: 2015-UP FORD F150

APP PART # 37-03830, 37-03835

OFF ROAD LIGHT BAR

| ITEM | QUANTITY | DESCRIPTION | TOOLS NEEDED |
|------|----------|--|-----------------|
| 1 | 2 | LIGHT BAR | 17MM WRENCH |
| 2,3 | 2 | MOUNTING STRAPS (2) DRIVERS SIDE, (3) PASSENGER SIDE | 17MM SOCKET |
| 4 | 4 | LIGHT SADDLE | 13MM WRENCH |
| 5 | 2 | LIGHT SADDLE EXTENSION (OPTIONAL) | 13MM SOCKET |
| 6 | 2 | SPACER | 6MM ALLEN WRCH. |
| 7 | 2 | M8 U-NUT | UTILITY KNIFE |
| 8 | 2 | M8X50MM HEX BOLT | RATCHET |
| 9 | 2 | M8X30MM HEX BOLT | TORQUE WRENCH |
| 10 | 4 | M8 FLAT WASHER | RATCHET EXT. |
| 11 | 4 | M8 LOCK WASHER | |
| 12 | 2 | M10X30MM BUTTON HEAD BOLT (OPTIONAL) | |
| 13 | 4 | M10 FLAT WASHER (OPTIONAL) | |
| 14 | 2 | M10 LOCK WASHER (OPTIONAL) | |
| 15 | 2 | M10 HEX NUT (OPTIONAL) | |

ANTI-SEIZE LUBRICANT MUST BE USED ON ALL STAINLESS STEEL FASTENERS TO PREVENT THREAD DAMAGE AND GALLING

1. Remove contents from box, verify if all parts listed are present and free from damage. Carefully read and understand all instructions before attempting installation. **Failure to identify damage before installation could lead to a rejection of any claim.**

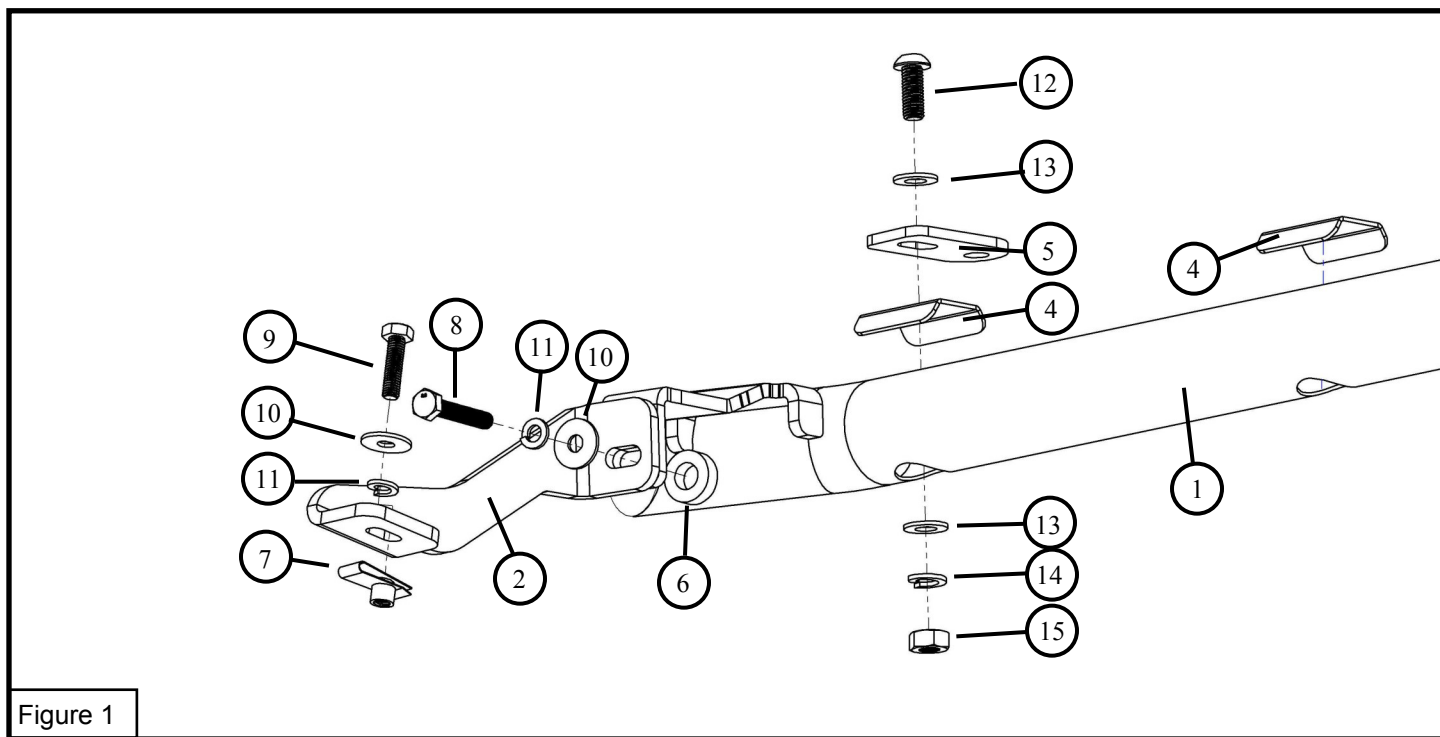
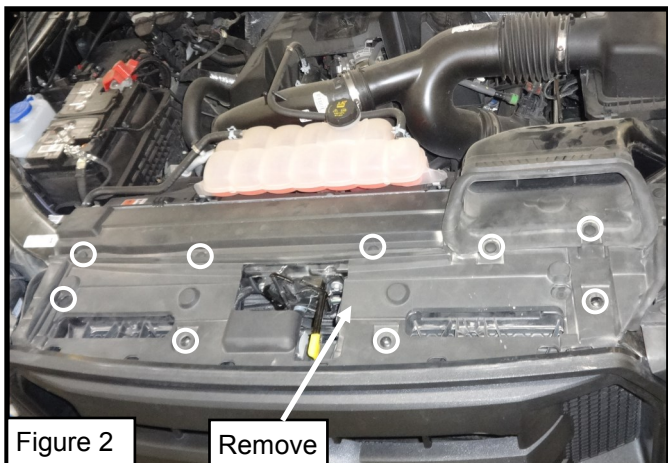


Figure 1



Westin Automotive Products, Inc.
320 Covina Blvd
San Dimas, Ca. 91773

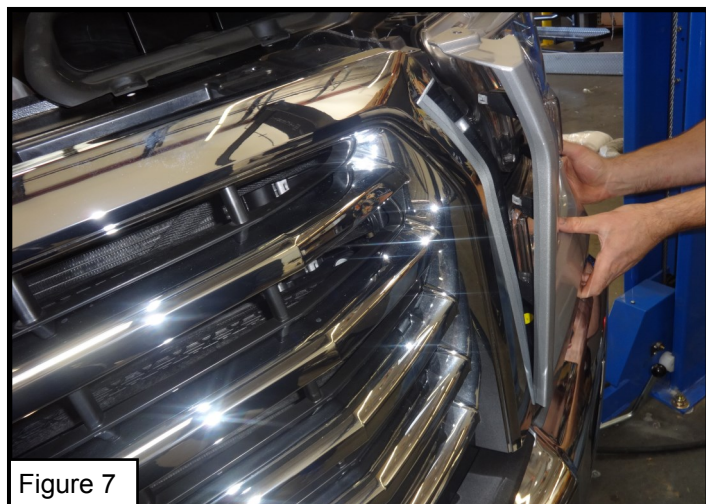
2. Follow the next steps below to have access to the mounting area.
3. Remove plastic cover by removing plastic push pins (Figure 2)
4. Remove screws (Figure 3)



5. Remove plastic covers at both sides (Figure 4) by removing screws at the fender (Figure 5).



6. Proceed to remove plastic cover as shown in Figure 6 and 7.



Westin Automotive Products, Inc.
320 Covina Blvd
San Dimas, Ca. 91773

7. Remove screws (Figure 9) on both sides of the front grille.



Figure 8

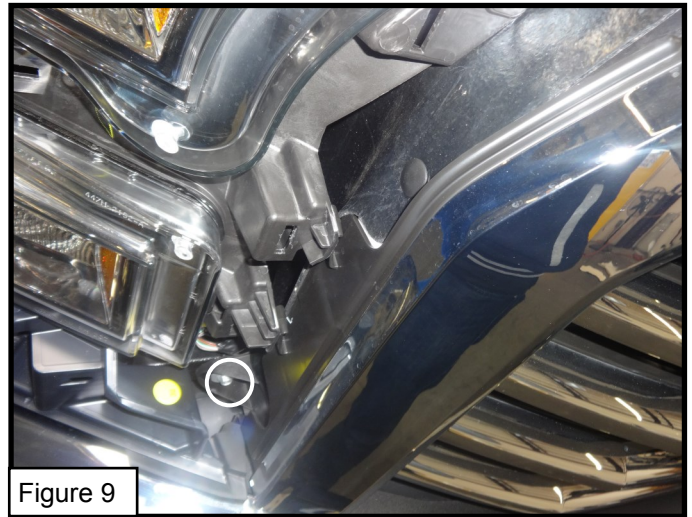


Figure 9

8. Remove plastic push pins (Figure 10).

9. Unplug any electrical connections before proceeding with removal of the grille.

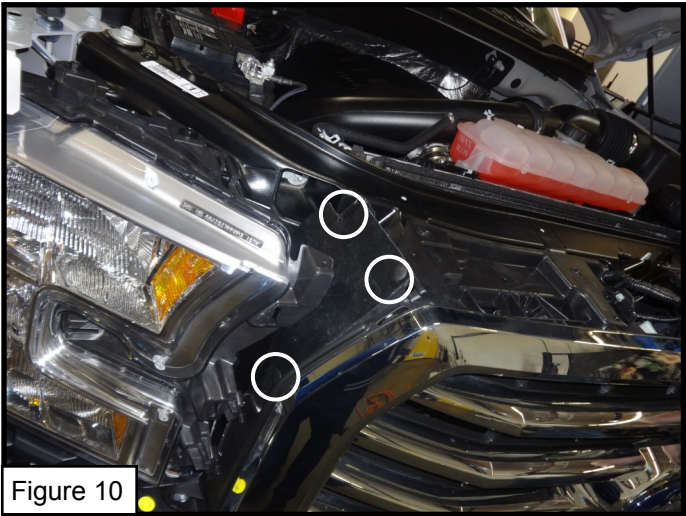


Figure 10

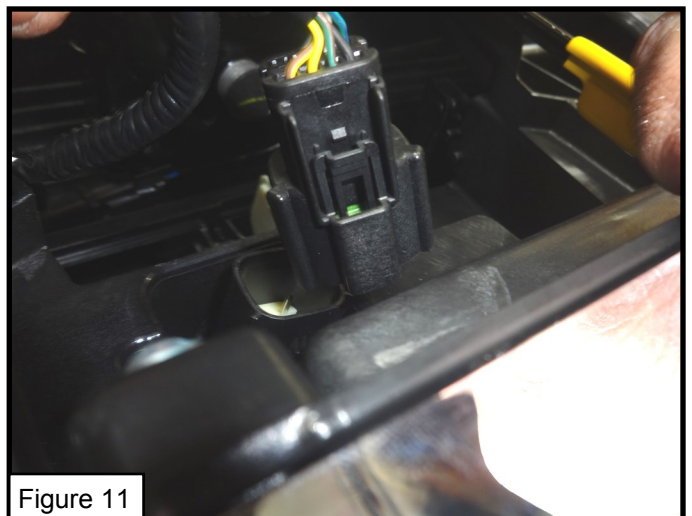


Figure 11

10. Remove grille. (Figure 12).

11. Remove plastic push pins as shown on Figure 13.



Figure 12



Figure 13



Westin Automotive Products, Inc.
320 Covina Blvd
San Dimas, Ca. 91773

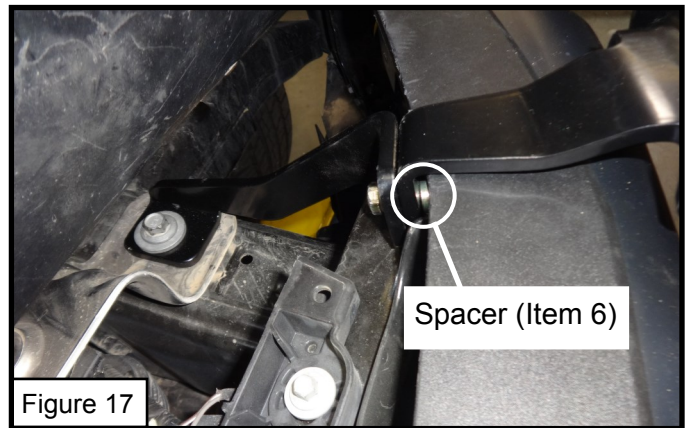
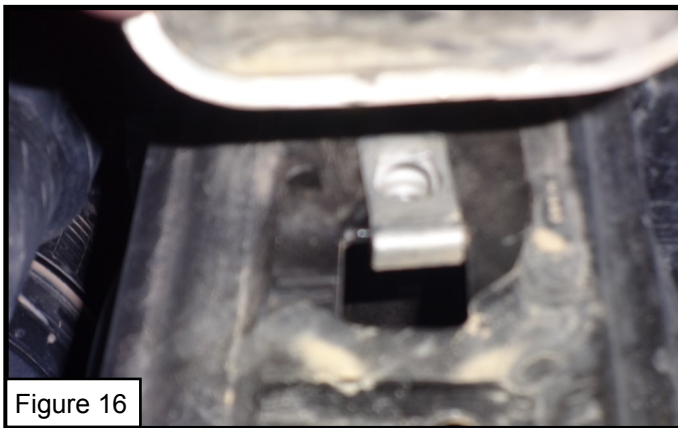
12. Pull rubber cover to have access to mounting locations. (Figure 14 & 15).

13. Remove bolts (Figure 14 & 15).



14. After removal of bolt on Figure 15, uncover the nut under the bracket (Figure 16).

15. If u-nut is not available proceed to install supplied M8 U-nut (Item 7).



16. Install mounting straps and light bar as shown in Figures 1, 17, and 18. Trim rubber cover at bracket locations (Fig. 18).

17. Torque M10 hardware to 40 ft-lbs and M8 to 20 ft-lbs.

18. Replace all the parts that were removed.

19. Light saddle (item 4) will be installed with the light kit's hardware that you will use to install in the light bar.

20. Light saddle extension (Item 5 optional) is supplied to make more room if light does not fit between mount location to vehicle grill.



CARE INSTRUCTIONS

- REGULAR WAXING IS RECOMMENDED. DO NOT USE ANY TYPE OF POLISH OR WAX THAT MAY CONTAIN ABRASIVES
- STAINLESS STEEL PRODUCTS CAN BE CLEANED WITH MILD SOAP AND WATER. STAINLESS STEEL POLISH SHOULD BE USED TO POLISH SMALL SCRATCHES.
- GLOSS BLACK FINISHES SHOULD BE CLEANED WITH MILD SOAP AND WATER



Westin Automotive Products, Inc.
320 Covina Blvd
San Dimas, Ca. 91773