



# INSTRUCTIONS—INSTRUCCIONES—CONSIGNES

APPLICATION: 03-06, 07 "CLASSIC" 1500 SILVERADO  
03-06 AVALANCHE W/O CLADDING  
Part # : 40-1175, 45-1170

SIGNATURE OF QUALITY

AUTOMOTIVE PRODUCTS, INC.

ITEM	QUANTITY	DESCRIPTION	TOOLS NEEDED
1	1	GRILLE GUARD	18MM SOCKET AND RACHET
2,3	2	FRAME MOUNTING BRACKET 2 (DRIVERS SIDE), 3(PASSENGER SIDE)	18MM WRENCH
4,5	2	TOP BRACKET 4(DRIVERS SIDE), 5 (PASSENGER SIDE)	16MM SOCKET AND RACHET
6	10	M12 X 30MM HEX HEAD BOLTS	16MM WRENCH
7	20	M12 X 3MM FLAT WASHERS	TORQUE WRENCH
8	10	M12 NYLOCK NUTS	ALLEN WRENCH (INCLUDED)
9	2	M10 X 25MM BUTTON HEAD BOLTS	
10	4	M10 X 2MM FLAT WASHERS	
11	2	M10 NYLOCK NUTS	

1. Remove all contents from box making sure all parts listed are present and free from damage. Carefully read and understand all instructions before attempting installation.
2. Starting on the driver side-front of the vehicle, locate the opening in the lower bumper cover at the front end of the frame. Select the driver side Frame Mounting Bracket. Remove the tow hook if equipped . **NOTE: On some model years, the tow hooks may be reinstalled but must be switched, driver side to passenger side to clear the Frame Mounting Bracket. Depending on model year, the plastic bumper cover may not clear the tow hook when switched side to side If the tow hook will fit properly, re-use the factory tow hook hardware to bolt the Frame Mounting Brackets to the vehicle. Otherwise, do not reinstall the tow hooks. It is up to the installer to determine if the tow hooks can be properly reinstalled and some trimming of the back of the plastic bumper cover may be required.**
3. Insert (1) M12 x 30mm Hex Bolt with (1) M12 Flat Washer through the opening in the front of the frame and out through the hole in the bottom of the frame. Line up the driver side Frame Mounting Bracket with the 12mm Hex Bolt. Secure with (1) M12 Flat Washer and (1) M12Nylock nut. Repeat this step for the 2nd mounting location on the outer side of the frame. Do not tighten fully at this time. On some vehicles you may need to remove the lower plastic valance to gain access to the frame rails, also you may need to trim a pocket in the plastic for the bracket to clear.
4. Repeat step 2 for passenger side
5. Open the hood and locate the cross member behind the bumper cover and grille. Remove the factory hex bolt on the top of the cross member. Insert the Drivers side Top Bracket through the opening in the bumper and attach it to the cross member with the factory hardware. Do not fully tighten at this time. Repeat this step for the passenger side
6. Place the Grille Guard up to the inside of the Frame Mounting Brackets. Secure the Grille Guard to the Brackets with (6) M12 x 30mm Hex Bolts, (12) M12 Flat Washers and (6) M12 Nylon Lock Nuts. Do not fully tighten hardware at this time.
7. Line up the Top Bracket with the hole in the Grille Guard upright. Insert (1) M10 Button Head Bolt with (1) M10 Flat Washer through the upright and Top Bracket. Secure with (1) M10 Flat Washer and (1) M10 Nyloc Nut. Repeat this step on the passenger side Top Bracket. Do not fully tighten at this time.
8. While the hood is open properly align the Grille Guard and tighten all hardware at this time
9. Torque all M12 hardware to 25-30 ft lbs and all M10 hardware to 15-20 ft lbs



Westin Automotive Products, Inc.  
5200 N. Irwindale Ave. Ste 220  
Irwindale, Ca 91706

Thank You for choosing Westin products  
For additional installation assistance please call  
Customer Service (800)793-7846

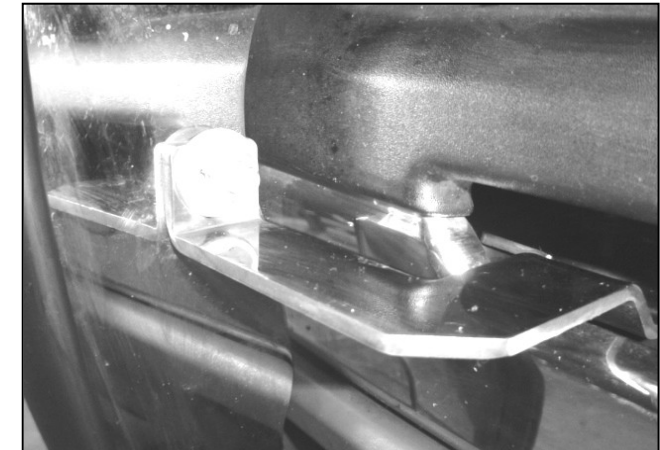
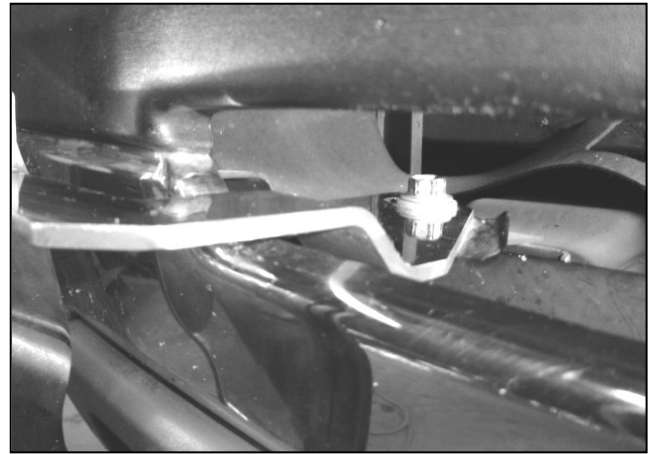
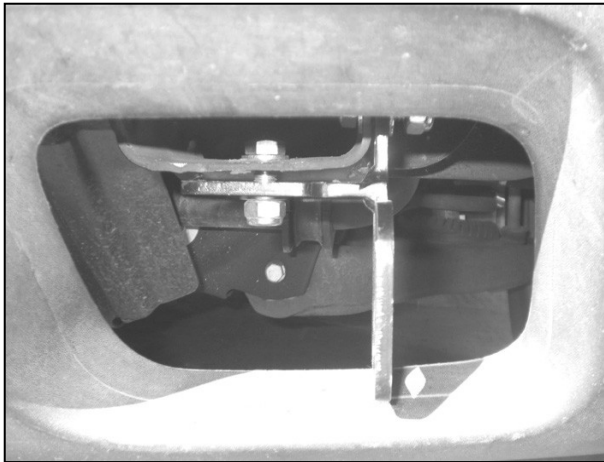
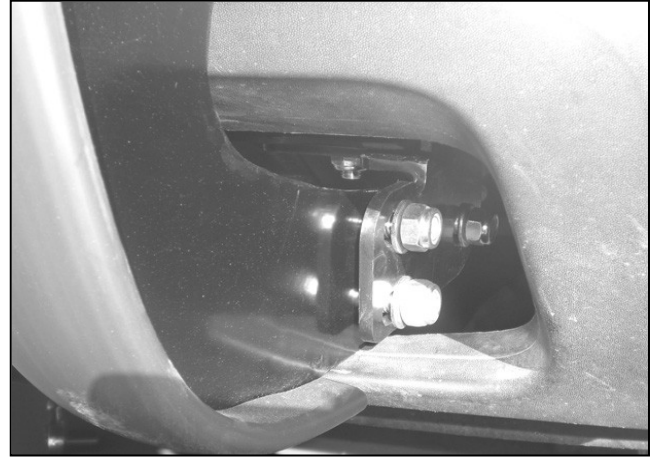
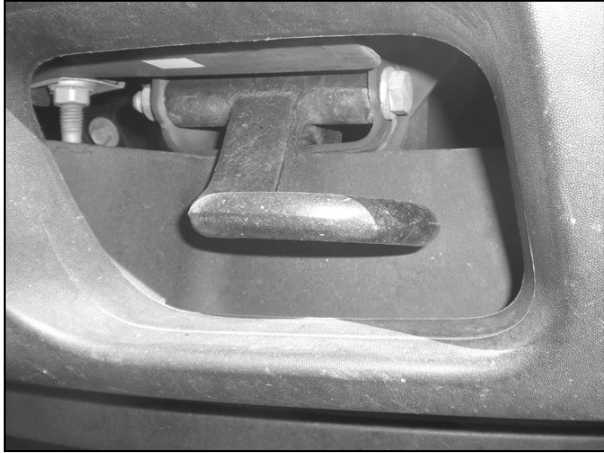


SIGNATURE OF QUALITY

AUTOMOTIVE PRODUCTS, INC.

# INSTRUCTIONS—INSTRUCCIONES—CONSIGNES

APPLICATION: 03-06, 07 "CLASSIC" 1500 SILVERADO  
03-06 AVALANCHE W/O CLADDING  
Part # : 40-1175, 45-1170



Westin Automotive Products, Inc.  
5200 N. Irwindale Ave. Ste 220  
Irwindale, Ca 91706

2/10/2012

2

Thank You for choosing Westin products  
For additional installation assistance please call  
Customer Service (800)793-7846

75-0998 REV B ECO# W12-0999